

# SHAKER MEETING HOUSE

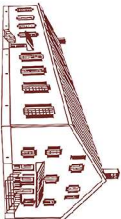
# ATTIC INSULATION

25 MEETING HOUSE RD ALBANY, NY 12211

CONSTRUCTION DOCUMENTS

GENERAL CONSTRUCTION PACKAGE

OWNER



SHAKER  
HERITAGE  
SOCIETY

25 MEETING HOUSE ROAD  
ALBANY, NY 12211  
518-456-7890

ARCHITECT



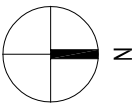
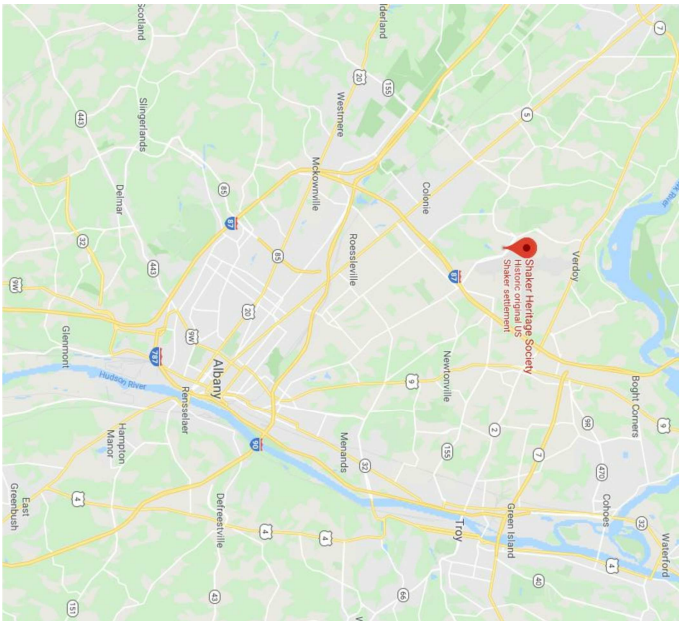
Lacey Thaler Reilly Wilson  
Architecture & Preservation, LLP

79 N. Pearl Street, Fourth Floor  
Albany, NY 12207

518.375.1485  
ltrw-arch.com

DRAWING LIST

- G001 COVER SHEET
- G002 GENERAL NOTES & SYMBOLS
- G003 SPECIFICATIONS
- A001 ATTIC PLAN
- A002 LONGITUDINAL SECTION
- A003 TRANSVERSE SECTION & PHOTOS



STAMP

Lacey Thaler Reilly Wilson Architecture & Preservation, LLP 79 N. Pearl Street, Fourth Floor Albany, NY 12207 518.375.1485 ltrw-arch.com		PROJECT NAME		SHAKER MEETING HOUSE ATTIC INSULATION		PROJECT No. 19-037		SCALE: AS NOTED		DRAWING NUMBER	
DRAWING TITLE		COVER SHEET		DATE: 4/8/2020		DRAWN BY: SM				G001	
										© COPYRIGHT 2019 LACEY THALER REILLY WILSON ARCHITECTURE & PRESERVATION, LLP "ALL RIGHTS RESERVED" AND UNAUTHORIZED DUPLICATION IS A VIOLATION OF APPLICABLE LAWS"	

GENERAL CONSTRUCTION NOTES:

- THESE GENERAL NOTES ARE APPLICABLE TO ALL DRAWINGS IN THIS SET OF CONTRACT DOCUMENTS. IT IS A VIOLATION OF NEW YORK STATE EDUCATION LAW FOR THESE DRAWINGS TO BE MODIFIED EXCEPT BY A NEW YORK STATE-LICENSED ARCHITECT OR ENGINEER.
- CONTRACTOR TO VERIFY ALL EXISTING CONDITIONS AND DIMENSIONS. ANY DEVIATIONS BETWEEN EXISTING CONDITIONS AND INFORMATION INDICATED IN THE CONTRACT DOCUMENTS MUST BE BROUGHT TO THE ATTENTION OF AND RECONCILED WITH THE ARCHITECT PRIOR TO THE COMMENCEMENT OF THE WORK. DRAWINGS MUST NOT BE SCALED; WRITTEN DIMENSIONS ON THE DRAWINGS TAKE PRECEDENCE.
- DRAWINGS ARE ISSUED FOR DESIGN INTENT ONLY. THEY ARE NOT INTENDED TO ILLUSTRATE ALL ASPECTS OF THE WORK CONTRACTUALLY REQUIRED TO EXECUTE THE PROJECT. THEY DO NOT INCLUDE NECESSARY REQUIREMENTS FOR OSHA OR OTHER CONSTRUCTION SAFETY COMPLIANCE. NYS LABOR AND INSURANCE REQUIREMENTS ARE THE SOLE RESPONSIBILITY OF THE CONTRACTOR.
- CONTRACTOR SHALL PROVIDE A CERTIFICATE OF INSURANCE TO THE SATISFACTION OF THE OWNERS INSURANCE CARRIER BEFORE WORK COMMENCES.
- ALL WORK IS TO COMPLY WITH THE REQUIREMENTS OF THE 2020 NEW YORK STATE EXISTING BUILDING CODE OF NEW YORK STATE AND ASSOCIATED FAMILY OF CODES; THE AMERICANS WITH DISABILITIES ACT; AND ALL LOCAL CODES. NO WORK SHALL BEGIN PRIOR TO THE ISSUANCE OF A BUILDING PERMIT BY THE AUTHORITY HAVING JURISDICTION AND AUTHORIZED CODE ENFORCEMENT OFFICIAL.
- ALL WORK SHALL BE COMPLETED IN A TIMELY AND PROFESSIONAL MANNER. THE WORKSITE SHALL BE KEPT CLEAN TO THE SATISFACTION OF THE OWNER.
- REMOVE & DISPOSE MATERIALS AS INDICATED IN THESE DRAWINGS. PROTECT IN PLACE ALL EXISTING ITEMS TO REMAIN.
- ANY MATERIALS IDENTIFIED BY THE OWNER AS HAZARDOUS SHALL BE REMOVED AND DISPOSED OF BY QUALIFIED PERSONNEL IN ACCORDANCE WITH ALL APPLICABLE LAWS AND REGULATIONS RELATING TO SUCH MATERIALS. IF THE CONTRACTOR ENCOUNTERS HAZARDOUS MATERIALS NOT PREVIOUSLY INDICATED, CONTRACTOR SHALL STOP WORK IMMEDIATELY AND NOTIFY THE OWNER AND AUTHORITIES AS REQUIRED BY LAW.
- TAKE ALL PRECAUTIONS TO STABILIZE AND PREPARE THE EXISTING BUILDING FOR NEW WORK. CONTRACTOR SHALL AVOID DAMAGE TO EXISTING CONSTRUCTION AND OVERALL HISTORIC INTEGRITY OF THE BUILDING COMPONENTS TO BE MODIFIED.
- ALL MATERIALS AND EQUIPMENT SHALL BE INSTALLED PER MANUFACTURERS RECOMMENDATIONS, EXCEPT WHERE MORE STRINGENT REQUIREMENTS ARE INDICATED ON THE DRAWINGS, OR AS REQUIRED BY CODE.

GENERAL NOTE:

DRAWINGS MUST NOT BE SCALED; WRITTEN DIMENSIONS ON THE DRAWINGS TAKE PRECEDENCE.

CONSTRUCTION KEY NOTES:

- 1

REMOVE EXISTING FIBERGLASS BATT INSULATION LAID OVER FLOOR DECK (SOME ROLLED BACK). GENTLY SCAPE BOARDS CLEAN OF FIBERGLASS RESIDUE (DO NOT GOUGE BOARDS). CAREFULLY REMOVE AND SALVAGE EXISTING ATTIC 18G FLOOR DECK BOARDS FOR REINSTALLATION. PROVIDE BLOWN-IN CELLULOSE INSULATION IN FRAMING CAVITY. APPROX. 8½" DEPTH. REINSTALL SALVAGED FLOOR DECK BOARDS USING CUT NAILS.
- 2

REMOVE EXISTING FIBERGLASS BATT INSULATION AND ASSOCIATED BATTENS FROM VERTICAL WALL SURFACE. PROVIDE NEW BATT INSULATION OVER THE ENTIRE FACE OF THE VERTICAL SURFACE. INSTALL WOOD BATTENS TO RESTRAIN THE INSULATION, HORIZONTALLY AT TOP, BOTTOM AND 2'-0" O.C. MAX.
- 3

REMOVE AND DISPOSE OF EXISTING BATT FIBERGLASS INSULATION. PROVIDE NEW BATT INSULATION OVER THE ENTIRE FACE OF THE TOP OF THE THIRD FLOOR VOLUME AND BOILER ROOM (AS INDICATED).
- 4

EXISTING PERIMETER DUCTWORK AND AIR HANDLING UNITS (AHU) ARE EXISTING TO REMAIN. PROTECT ALL INTAKE OR EXHAUST OPENINGS ON AHUS. PROTECT HARD DUCT FOIL INSULATION AND PLASTIC WRAPPED FLEX DUCTS. REMOVE EXISTING BATT INSULATION BENEATH DUCTS AND SUPPORTS. EXERCISE CARE MOVING FLEX DUCTS SO THEY DO NOT BECOME DETACHED FROM TRUNK LINES OR DIFFUSERS.
- 5

EXISTING PERIMETER HALL CEILING DIFFUSERS ARE EXISTING TO REMAIN. PROVIDE A PERIMETER RING OF BATT INSULATION AROUND THE DIFFUSER DUCT BOX TO ALLOW FUTURE WORK AND REDUCE CELLULOSE LOSS AT CEILING PENETRATION.
- 6

PROVIDE REPLACEMENT DECK BOARDS (1" x 8") FOR MISSING, DAMAGED OR DETERIORATED EXISTING DECK FLOOR IN AREA INDICATED.
- 7

INSTALL NEW BATT INSULATION IN THE FLOOR CAVITIES IN THE AREA INDICATED INSTEAD OF CELLULOSE TO ASSIST IN THE FUTURE REPAIR OF THE CEILING BELOW.

ALTERNATE #1:

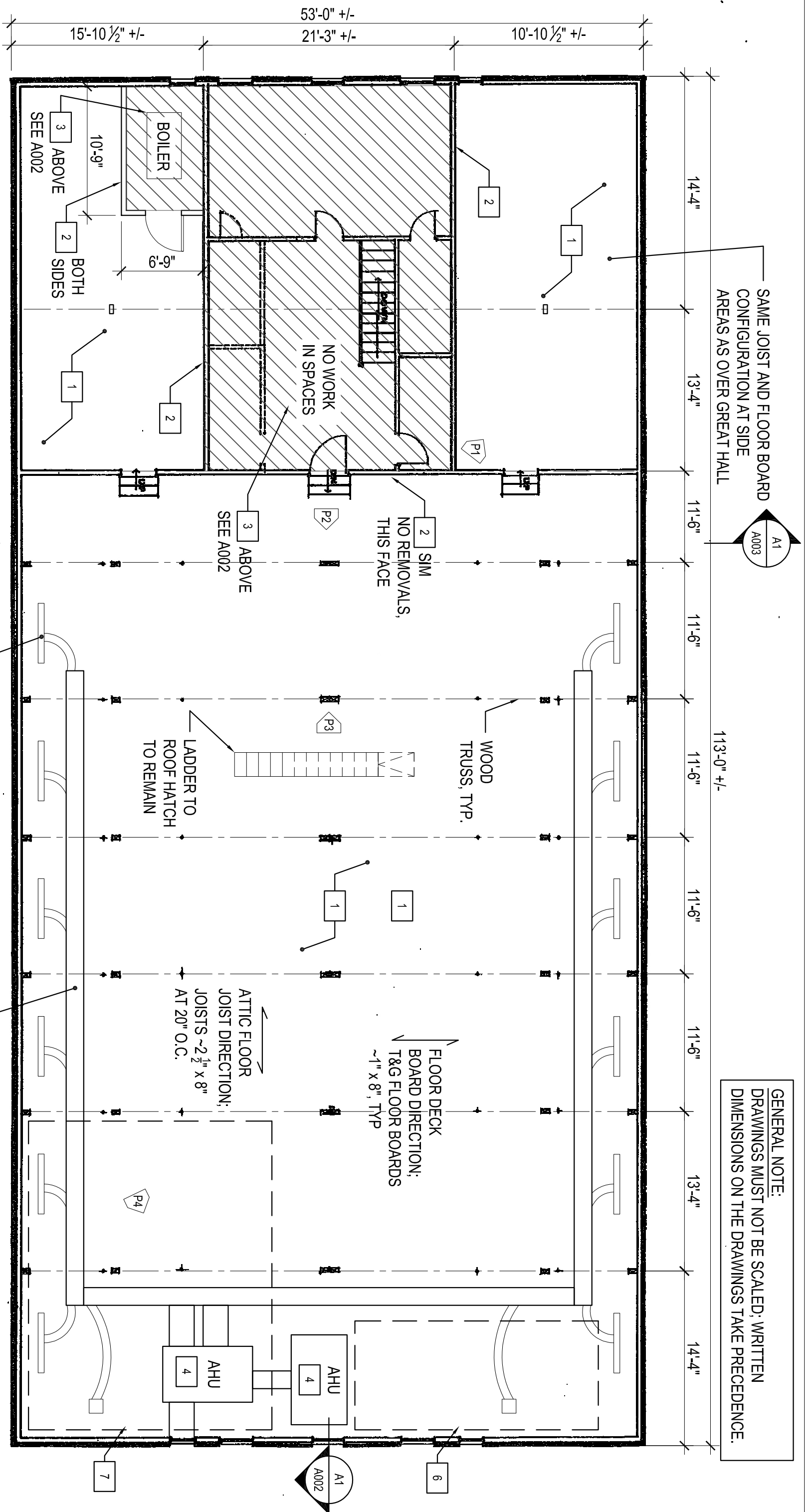
IN PLACE OF REMOVING ENTIRE FLOOR BOARDS, CUT AND REMOVE SEGMENTS OF FLOOR BOARDS TO ALLOW FOR PLACEMENT OF BLOW-IN CELLULOSE CAVITY INSULATION. REPLACE CUT SEGMENTS OF FLOOR BOARDS AND ANCHOR WITH CUT NAILS. SIZE AND SPACING OF CUT OPENINGS TO BE PER MANUFACTURERS AND INDUSTRY RECOMMENDATIONS. STAGGER OPENINGS.

IF ALTERNATE PRICING IS PROVIDED, PROVIDE DIAGRAM OF PROPOSED CUT LAYOUT WITH PROPOSAL.

UNIT PRICING:  
PROVIDE PER FOOT COST OF INSTALLATION OF REPLACEMENT DECK BOARDS (1" x 8") FOR MISSING, DAMAGED OR DETERIORATED EXISTING DECK FLOOR NOT INDICATED AND EXCEEDING THE ALLOWANCE GIVEN IN KEY NOTE 6 ABOVE.

STAMP:	
<div><div><div><div><div><div></div><div></div><div></div><div></div><div></div><div></div><div></div><div></div><div></div><div></div><div></div><div></div><div></div><div></div><div></div><div></div><div></div><div></div><div></div><div></div><div></div><div></div><div></div><div></div><div></div><div></div><div></div><div></div><div></div><div></div><div></div><div></div><div></div><div></div><div></div><div></div><div></div><div></div><div></div><div></div><div></div><div></div><div></div><div></div><div></div><div></div><div></div><div></div><div></div><div></div><div></div><div></div><div></div><div></div><div></div><div></div><div></div><div></div><div></div><div></div><div></div><div></div><div></div><div></div><div></div><div></div><div></div><div></div><div></div><div></div><div></div><div></div><div></div><div></div><div></div><div></div><div></div><div></div><div></div><div></div><div></div><div></div><div></div><div></div><div></div><div></div><div></div><div></div><div></div><div></div><div></div><div></div><div></div><div></div><div></div><div></div><div></div><div></div><div></div><div></div><div></div><div></div><div></div><div></div><div></div><div></div><div></div><div></div><div></div><div></div><div></div><div></div><div></div><div></div><div></div><div></div><div></div><div></div><div></div><div></div><div></div><div></div><div></div><div></div><div></div><div></div><div></div><div></div><div></div><div></div><div></div><div></div><div></div><div></div><div></div><div></div><div></div><div></div><div></div><div></div><div></div><div></div><div></div><div></div><div></div><div></div><div></div><div></div><div></div><div></div><div></div><div></div><div></div><div></div><div></div><div></div><div></div><div></div><div></div><div></div><div></div><div></div><div></div><div></div><div></div><div></div><div></div><div></div><div></div><div></div><div></div><div></div><div></div><div></div><div></div><div></div><div></div><div></div><div></div><div></div><div></div><div></div><div></div><div></div><div></div><div></div><div></div><div></div><div></div><div></div><div></div><div></div><div></div><div></div><div></div><div></div><div></div><div></div><div></div><div></div><div></div><div></div><div></div><div></div><div></div><div></div><div></div><div></div><div></div><div></div><div></div><div></div><div></div><div></div><div></div><div></div><div></div><div></div><div></div><div></div><div></div><div></div><div></div><div></div><div></div><div></div><div></div><div></div><div></div><div></div><div></div><div></div><div></div><div></div><div></div><div></div><div></div><div></div><div></div><div></div><div></div><div></div><div></div><div></div><div></div><div></div><div></div><div></div><div></div><div></div><div></div><div></div><div></div><div></div><div></div><div></div><div></div><div></div><div></div><div></div><div></div><div></div><div></div><div></div><div></div><div></div><div></div><div></div><div></div><div></div><div></div><div></div><div></div><div></div><div></div><div></div><div></div><div></div><div></div><div></div><div></div><div></div><div></div><div></div><div></div><div></div><div></div><div></div><div></div><div></div><div></div><div></div><div></div><div></div><div></div><div></div><div></div><div></div><div></div><div></div><div></div><div></div><div></div><div></div><div></div><div></div><div></div><div></div><div></div><div></div><div></div><div></div><div></div><div></div><div></div><div></div><div></div><div></div><div></div><div></div><div></div><div></div><div></div><div></div><div></div><div></div><div></div><div></div><div></div><div></div><div></div><div></div><div></div><div></div><div></div><div></div><div></div><div></div><div></div><div></div><div></div><div></div><div></div><div></div><div></div><div></div><div></div><div></div><div></div><div></div><div></div><div></div><div></div><div></div><div></div><div></div><div></div><div></div><div></div><div></div><div></div><div></div><div></div><div></div><div></div><div></div><div></div><div></div><div></div><div></div><div></div><div></div><div></div><div></div><div></div><div></div><div></div><div></div><div></div><div></div><div></div><div></div><div></div><div></div><div></div><div></div><div></div><div></div><div></div><div></div><div></div><div></div><div></div><div></div><div></div><div></div><div></div><div></div><div></div><div></div><div></div><div></div><div></div><div></div><div></div><div></div><div></div><div></div><div></div><div></div><div></div><div></div><div></div><div></div><div></div><div></div><div></div><div></div><div></div><div></div><div></div><div></div><div></div><div></div><div></div><div></div><div></div><div></div><div></div><div></div><div></div><div></div><div></div><div></div><div></div><div></div><div></div><div></div><div></div><div></div><div></div><div></div><div></div><div></div><div></div><div></div><div></div><div></div><div></div><div></div><div></div><div></div><div></div><div></div><div></div><div></div><div></div><div></div><div></div><div></div><div></div><div></div><div></div><div></div><div></div><div></div><div></div><div></div><div></div><div></div><div></div><div></div><div></div><div></div><div></div><div></div><div></div><div></div><div></div><div></div><div></div><div></div><div></div><div></div><div></div><div></div><div></div><div></div><div></div><div></div><div></div><div></div><div></div><div></div><div></div><div></div><div></div><div></div><div></div><div></div><div></div><div></div><div></div><div></div><div></div><div></div><div></div><div></div><div></div><div></div><div></div><div></div><div></div><div></div><div></div><div></div><div></div><div></div><div></div><div></div><div></div><div></div><div></div><div></div><div></div><div></div><div></div><div></div><div></div><div></div><div></div><div></div><div></div><div></div><div></div><div></div><div></div><div></div><div></div><div></div><div></div><div></div><div></div><div></div><div></div><div></div><div></div><div></div><div></div><div></div><div></div><div></div><div></div><div></div><div></div><div></div><div></div><div></div><div></div><div></div><div></div><div></div><div></div><div></div><div></div><div></div><div></div><div></div><div></div><div></div><div></div><div></div><div></div><div></div><div></div><div></div><div></div><div></div><div></div><div></div><div></div><div></div><div></div><div></div><div></div><div></div><div></div><div></div><div></div><div></div><div></div><div></div><div></div><div></div><div></div><div></div><div></div><div></div><div></div><div></div><div></div><div></div><div></div><div></div><div></div><div></div><div></div><div></div><div></div><div></div><div></div><div></div><div></div><div></div><div></div><div></div><div></div><div></div><div></div><div></div><div></div><div></div><div></div><div></div><div></div><div></div><div></div><div></div><div></div><div></div><div></div><div></div><div></div><div></div><div></div><div></div><div></div><div></div><div></div><div></div><div></div><div></div><div></div><div></div><div></div><div></div><div></div><div></div><div></div><div></div><div></div><div></div><div></div><div></div><div></div><div></div><div></div><div></div><div></div><div></div><div></div><div></div><div></div><div></div><div></div><div></div><div></div><div></div><div></div><div></div><div></div><div></div><div></div><div></div><div></div><div></div><div></div><div></div><div></div><div></div><div></div><div></div><div></div><div></div><div></div><div></div><div></div><div></div><div></div><div></div><div></div><div></div><div></div><div></div><div></div><div></div><div></div><div></div><div></div><div></div><div></div><div></div><div></div><div></div><div></div><div></div><div></div><div></div><div></div><div></div><div></div><div></div><div></div><div></div><div></div><div></div><div></div><div></div><div></div><div></div><div></div><div></div><div></div><div></div><div></div><div></div><div></div><div></div><div></div><div></div><div></div><div></div><div></div><div></div><div></div><div></div><div></div><div></div><div></div><div></div><div></div><div></div><div></div><div></div><div></div><div></div><div></div><div></div><div></div><div></div><div></div><div></div><div></div><div></div><div></div><div></div><div></div><div></div><div></div><div></div><div></div><div></div><div></div><div></div><div></div><div></div><div></div><div></div><div></div><div></div><div></div><div></div><div></div><div></div><div></div><div></div><div></div><div></div><div></div><div></div><div></div><div></div><div></div><div></div><div></div><div></div><div></div><div></div><div></div><div></div><div></div><div></div><div></div><div></div><div></div><div></div><div></div><div></div><div></div><div></div><div></div><div></div><div></div><div></div><div></div><div></div><div></div><div></div><div></div><div></div><div></div><div></div><div></div><div></div><div></div><div></div><div></div><div></div><div></div><div></div><div></div><div></div><div></div><div></div><div></div><div></div><div></div><div></div><div></div><div></div><div></div><div></div><div></div><div></div><div></div><div></div><div></div><div></div><div></div><div></div><div></div><div></div><div></div><div></div><div></div><div></div><div></div><div></div><div></div><div></div><div></div><div></div><div></div><div></div><div></div><div></div><div></div><div></div><div></div><div></div><div></div><div></div><div></div><div></div><div></div><div></div><div></div><div></div><div></div><div></div><div></div><div></div><div></div><div></div><div></div><div></div><div></div><div></div><div></div><div></div><div></div><div></div><div></div><div></div><div></div><div></div><div></div><div></div><div></div><div></div><div></div><div></div><div></div><div></div><div></div><div></div><div></div><div></div><div></div><div></div><div></div><div></div><div></div><div></div><div></div><div></div><div></div><div></div><div></div><div></div><div></div><div></div><div></div><div></div><div></div><div></div><div></div><div></div><div></div><div></div><div></div><div></div><div></div><div></div><div></div><div></div><div></div><div></div><div></div><div></div><div></div><div></div><div></div><div></div><div></div><div></div><div></div><div></div><div></div><div></div><div></div><div></div><div></div><div></div><div></div><div></div><div></div><div></div><div></div><div></div><div></div><div></div><div></div><div></div><div></div><div></div><div></div><div></div><div></div><div></div><div></div><div></div><div></div><div></div><div></div><div></div><div></div><div></div><div></div><div></div><div></div><div></div><div></div><div></div><div></div><div></div><div></div><div></div><div></div><div></div><div></div><div></div><div></div><div></div><div></div><div></div><div></div><div></div><div></div><div></div><div></div><div></div><div></div><div></div><div></div><div></div><div></div><div></div><div></div><div></div><div></div><div></div><div></div><div></div><div></div><div></div><div></div><div></div><div></div><div></div><div></div><div></div><div></div><div></div><div></div><div></div><div></div><div></div><div></div><div></div><div></div><div></div><div></div><div></div><div></div><div></div><div></div><div></div><div></div><div></div><div></div><div></div><div></div><div></div><div></div><div></div><div></div><div></div><div></div><div></div><div></div><div></div><div></div><div></div><div></div><div></div><div></div><div></div><div></div><div></div><div></div><div></div><div></div><div></div><div></div><div></div><div></div><div></div><div></div><div></div><div></div><div></div><div></div><div></div><div></div><div></div><div></div><div></div><div></div><div></div><div></div><div></div><div></div><div></div><div></div><div></div><div></div><div></div><div></div><div></div><div></div><div></div><div></div><div></div><div></div><div></div><div></div><div></div><div></div><div></div><div></div><div></div><div></div><div></div><div></div><div></div><div></div><div></div><div></div><div></div><div></div><div></div><div></div><div></div><div></div><div></div><div></div><div></div><div></div><div></div>&lt;</div></div></div></div></div>	

<div><div><div>SPECIFICATIONS</div><div>THERMAL INSULATION 072100</div><div>PART 1 - GENERAL</div><div>1.1 RELATED DOCUMENTS</div><div>A. DRAWINGS AND GENERAL PROVISIONS OF THE CONTRACT, INCLUDING GENERAL AND SUPPLEMENTARY CONDITIONS AND DIVISION 01 SPECIFICATION SECTIONS, APPLY TO THIS SECTION.</div><div>1.2 SUMMARY</div><div>A. SECTION INCLUDES:</div><div>1. MINERAL-WOOL BLANKET INSULATION.</div><div>2. LOOSE-FILL INSULATION.</div><div>1.3 ACTION SUBMITTALS</div><div>A. PRODUCT DATA: FOR THE FOLLOWING:</div><div>1. MINERAL-WOOL BLANKET INSULATION.</div><div>2. LOOSE-FILL INSULATION.</div><div>1.4 INFORMATIONAL SUBMITTALS</div><div>A. INSTALLER'S CERTIFICATION: LISTING TYPE, MANUFACTURER, AND R-VALUE OF INSULATION INSTALLED IN EACH ELEMENT OF THE BUILDING THERMAL ENVELOPE.</div><div>1. FOR CELLULOSIC-FIBER LOOSE-FILL INSULATION, INDICATE INITIAL INSTALLED THICKNESS, SETTLED THICKNESS, SETTLED R-VALUE, INSTALLED DENSITY, COVERAGE AREA, AND NUMBER OF BAGS INSTALLED.</div><div>2. SIGN, DATE, AND POST THE CERTIFICATION IN A CONSPICUOUS LOCATION ON PROJECT SITE.</div><div>B. PRODUCT TEST REPORTS: FOR EACH PRODUCT, FOR TESTS PERFORMED BY A QUALIFIED TESTING AGENCY.</div><div>1.5 DELIVERY, STORAGE, AND HANDLING</div><div>A. PROTECT INSULATION MATERIALS FROM PHYSICAL DAMAGE AND FROM DETERIORATION DUE TO MOISTURE, SOILING, AND OTHER SOURCES. STORE INSIDE AND IN A DRY LOCATION. COMPLY WITH MANUFACTURER'S WRITTEN INSTRUCTIONS FOR HANDLING, STORING, AND PROTECTING DURING INSTALLATION.</div></div></div> <div><div><div>PART 2 - PRODUCTS</div><div>2.1 MINERAL-WOOL BLANKET INSULATION</div><div>A. MINERAL-WOOL BLANKET INSULATION, UNFACED &lt;INSERT DRAWING DESIGNATION&gt; ASTM C665, TYPE 1A (BLANKETS WITHOUT MEMBRANE FACING); CONSISTING OF FIBERS, PASSING ASTM E136 FOR COMBUSTION CHARACTERISTICS.</div><div>3. MANUFACTURERS: SUBJECT TO COMPLIANCE WITH REQUIREMENTS, PROVIDE PRODUCTS BY ONE OF THE FOLLOWING:</div><div>a. JOHNS MANVILLE; A BERKSHIRE HATHAWAY COMPANY.</div><div>b. ROCKWOOL INTERNATIONAL.</div><div>c. THERMAFIBER, INC.; AN OWENS CORNING COMPANY.</div><div>2. FLAME-SPREAD INDEX: NOT MORE THAN 25 WHEN TESTED IN ACCORDANCE WITH ASTM E84.</div><div>3. SMOKE-DEVELOPED INDEX: NOT MORE THAN 50 WHEN TESTED IN ACCORDANCE WITH ASTM E84.</div><div>4. LABELING: PROVIDE IDENTIFICATION OF MARK INDICATING R-VALUE OF EACH PIECE OF INSULATION 12 INCHES AND WIDER IN WIDTH.</div><div>2.2 LOOSE-FILL INSULATION</div><div>A. CELLULOSIC-FIBER LOOSE-FILL INSULATION ASTM C739, CHEMICALLY TREATED FOR FLAME-RESISTANCE, PROCESSING, AND HANDLING CHARACTERISTICS.</div><div>1. MANUFACTURERS: SUBJECT TO COMPLIANCE WITH REQUIREMENTS, PROVIDE PRODUCTS BY ONE OF THE FOLLOWING:</div><div>a. GREENFIBER.</div><div>b. HAMILTON MANUFACTURING INC.</div><div>c. NU-WOOL CO., INC.</div></div></div> <div><div><div>PART 3 - EXECUTION</div><div>3.1 PREPARATION</div><div>A. CLEAN SUBSTRATES OF SUBSTANCES THAT ARE HARMFUL TO INSULATION, INCLUDING REMOVING PROJECTIONS CAPABLE OF PUNCTURING INSULATION, OR THAT INTERFERE WITH INSULATION ATTACHMENT.</div><div>3.2 INSTALLATION, GENERAL</div><div>A. COMPLY WITH INSULATION MANUFACTURER'S WRITTEN INSTRUCTIONS APPLICABLE TO PRODUCTS AND APPLICATIONS.</div><div>B. INSTALL INSULATION THAT IS UNDAMAGED, DRY, AND UNSOILED AND THAT HAS NOT BEEN LEFT EXPOSED TO ICE, RAIN, OR SNOW AT ANY TIME.</div><div>C. INSTALL INSULATION WITH MANUFACTURER'S R-VALUE LABEL EXPOSED AFTER INSULATION IS INSTALLED.</div><div>D. EXTEND INSULATION TO ENVELOP ENTIRE AREA TO BE INSULATED. FIT TIGHTLY AROUND OBSTRUCTIONS AND FILL VOIDS WITH INSULATION. REMOVE PROJECTIONS THAT INTERFERE WITH PLACEMENT.</div><div>E. PROVIDE SIZES TO FIT APPLICATIONS AND SELECTED FROM MANUFACTURER'S STANDARD THICKNESSES, WIDTHS, AND LENGTHS. APPLY SINGLE LAYER OF INSULATION UNITS UNLESS MULTIPLE LAYERS ARE OTHERWISE SHOWN OR REQUIRED TO MAKE UP TOTAL THICKNESS OR TO ACHIEVE R-VALUE.</div><div>3.6 INSTALLATION OF INSULATION IN FRAMED CONSTRUCTION</div><div>A. LOOSE-FILL INSULATION: APPLY IN ACCORDANCE WITH ASTM C1015 AND MANUFACTURER'S WRITTEN INSTRUCTIONS.</div><div>1. LEVEL HORIZONTAL APPLICATIONS TO UNIFORM THICKNESS AS INDICATED, LIGHTLY SETTLE TO UNIFORM DENSITY, BUT DO NOT COMPACT EXCESSIVELY.</div><div>2. FOR CELLULOSIC-FIBER LOOSE-FILL INSULATION, COMPLY WITH CIMA'S BULLETIN #2, "STANDARD PRACTICE FOR INSTALLING CELLULOSE INSULATION."</div><div>END OF SECTION 072100</div></div></div>	<div><div><div>PROJECT NAME</div><div>SHAKER MEETING HOUSE</div><div>ATTIC INSULATION</div><div>SPECIFICATIONS</div></div></div>	<div><div><div>PROJECT No.</div><div>19-037</div><div>DATE:</div><div>4/8/2020</div></div><div><div>SCALE:</div><div>AS NOTED</div><div>DRAWN BY:</div><div>SM</div></div></div>	<div><div>DRAWING NUMBER</div><div>G003</div></div>
<div><div><div>STAMP</div><div><div><div>Lacey Thaler Reilly Wilson</div><div>Architecture &amp; Preservation, LLP</div><div>79 N. Pearl Street, Fourth Floor</div><div>Albany, NY 12207</div></div><div><div>518.375.1485</div><div>ltrw-arch.com</div></div></div></div></div>	<div><div><div>PROJECT TITLE</div><div>SPECIFICATIONS</div></div></div>	<div><div><div>PROJECT No.</div><div>19-037</div><div>DATE:</div><div>4/8/2020</div></div><div><div>SCALE:</div><div>AS NOTED</div><div>DRAWN BY:</div><div>SM</div></div></div>	<div><div>DRAWING NUMBER</div><div>G003</div></div>



SAME JOIST AND FLOOR BOARD  
CONFIGURATION AT SIDE  
AREAS AS OVER GREAT HALL

**GENERAL NOTE:**  
**DRAWINGS MUST NOT BE SCALED; WRITTEN**  
**DIMENSIONS ON THE DRAWINGS TAKE PRECEDENCE.**

A1	ATTIC PLAN
A001	1/8" = 1'-0" APPROXIMATE

EXISTING GREAT HALL CEILING DIFFUSER  
AT ATTIC FLOOR TO REMAIN, TYP. 5

EXISTING DUCT, TYP.	4
---------------------	---

PROJECT NAME

# SHAKER MEETING HOUSE

PROJECT No.

19-037

SCALE:  
AS NOTED

Lacey Thaler Reilly Wilson

**Architecture & Preservation, LLP**

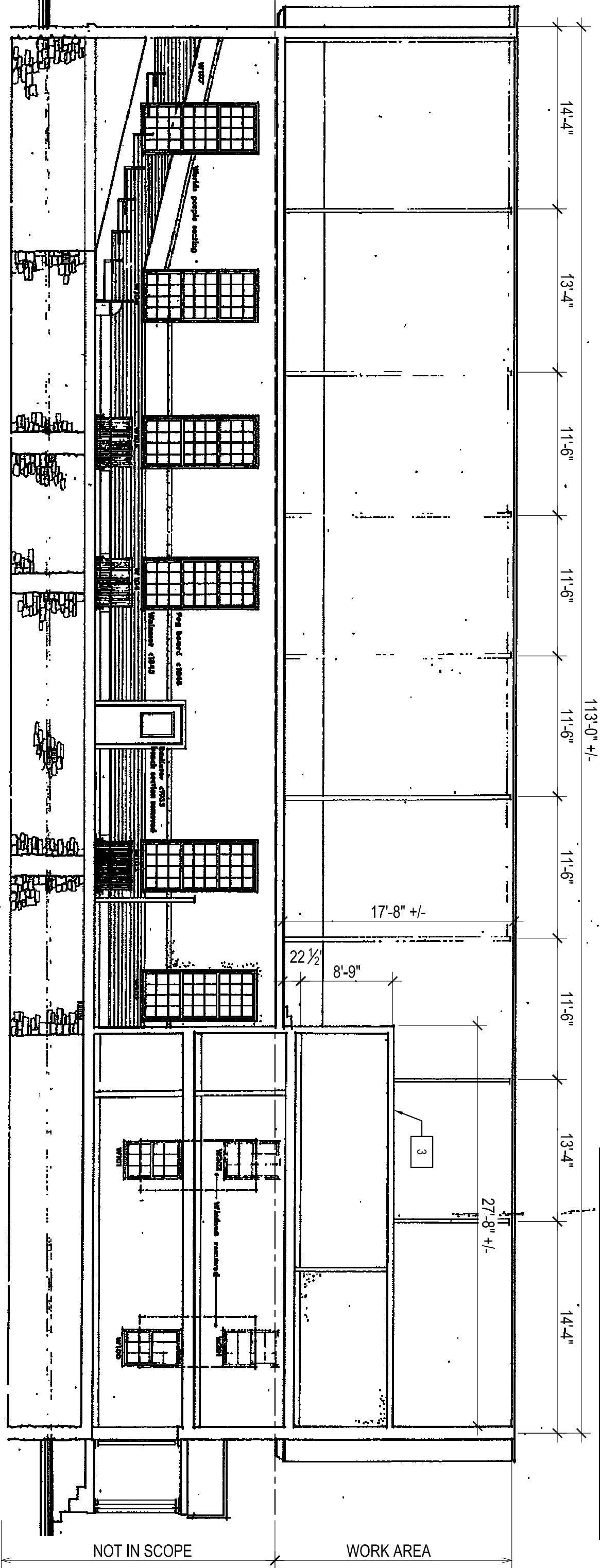
79 N. Pearl Street, Fourth Floor  
Albany, NY 12207  
518.375.1485  
ltrw-arch.com

# A001

## ATTIC PLAN

© COPYRIGHT 2019 LACEY THALER REILLY WILSON ARCHITECTURE & PRESERVATION LLP  
"ALL RIGHTS RESERVED" AND "UNAUTHORIZED DUPLICATION IS A VIOLATION OF APPLICABLE LAWS"

GENERAL NOTE:  
DRAWINGS MUST NOT BE SCALED; WRITTEN  
DIMENSIONS ON THE DRAWINGS TAKE PRECEDENCE.

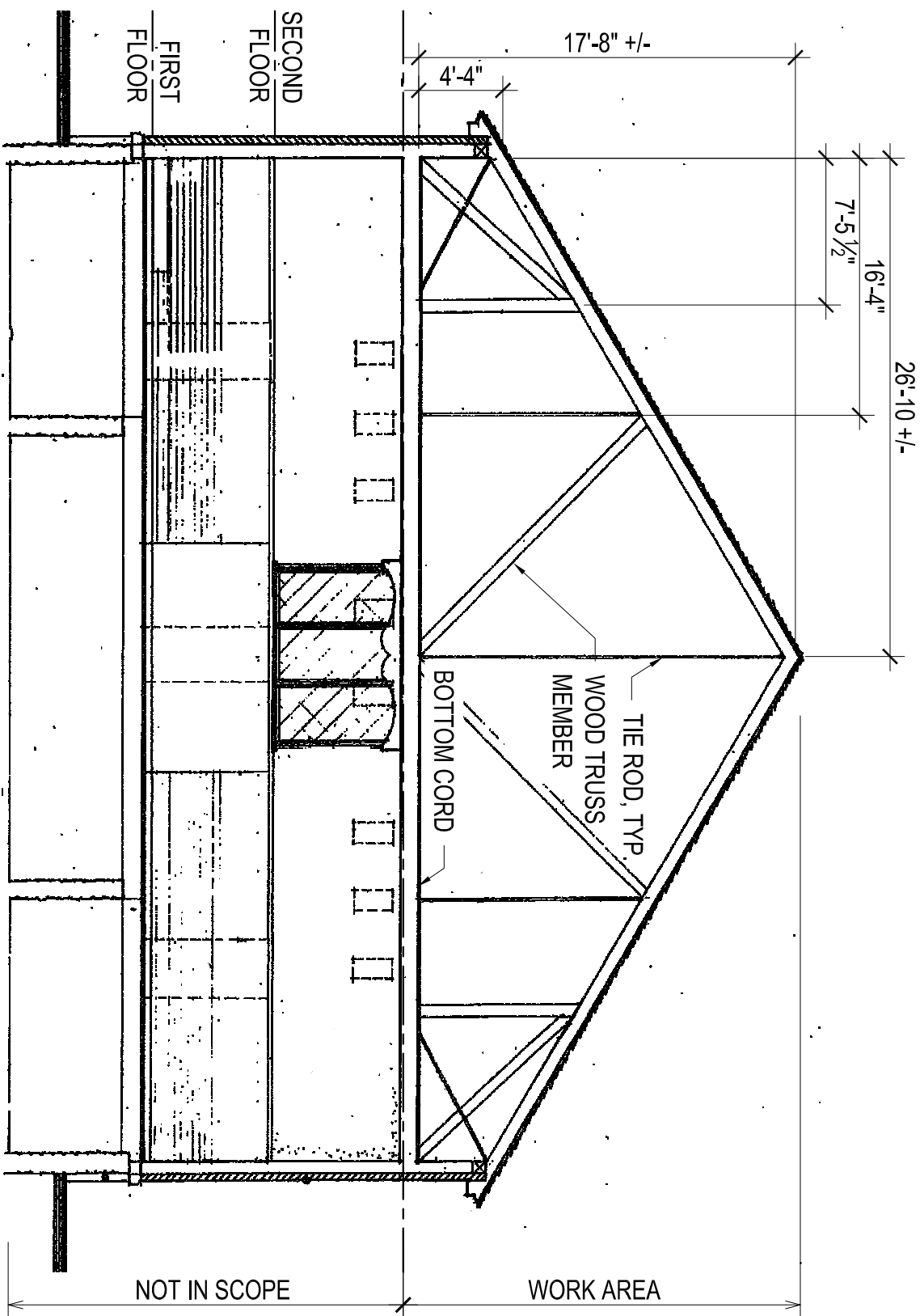


A1 SECTION 1  
A002 1/8" = 1'-0" APPROXIMATE

STAMP

<div><div><div></div></div><div>Lacey Thaler Reilly Wilson Architecture &amp; Preservation, LLP 79 N. Pearl Street, Fourth Floor Albany, NY 12207</div></div>		PROJECT NAME SHAKER MEETING HOUSE ATTIC INSULATION	
DRAWING TITLE LONGITUDINAL SECTION		PROJECT No. 19-037	
		SCALE: AS NOTED	
		DATE: 4/8/2020	DRAWN BY: SM
		DRAWING NUMBER A002	
© COPYRIGHT 2019 LACEY THALER REILLY WILSON ARCHITECTURE & PRESERVATION, LLP "ALL RIGHTS RESERVED" AND "UNAUTHORIZED DUPLICATION IS A VIOLATION OF APPLICABLE LAWS"			

GENERAL NOTE:  
DRAWINGS MUST NOT BE SCALED. WRITTEN DIMENSIONS  
ON THE DRAWINGS TAKE PRECEDENCE.



**NOTE:**  
TRUSS AND STRUCTURAL SYSTEM IS  
SHOWN FOR REFERENCE ONLY. NO  
CHANGES ARE TO BE MADE TO THE  
TRUSS OR OTHER FRAMING.

A1	SECTION 2
A003	1/8" = 1'-0" APPROXIMATE

**NOTE:**  
**SEE PLAN**  
**A1/A001 FOR**  
**PHOTO KEYS**



A2	EXISTING PHOTOS
A003	#####

P1

P2

$\rho_3$

P4

SHAKER MEETING HOUSE

Lacey Thaler Reilly Wilson

**Architecture & Preservation, LLP**

79 N. Pearl Street, Fourth Floor  
Albany, NY 12207  
518.375.1485  
ltrw-arch.com

DRAFTING TITLE

## TRANSVERSE SECTION & PHOTOS

PROJECT No.

19-037

DATE: 4/8/2020

SCALE:  
AS NOTED

DRAWN BY:

© COPYRIGHT 2019 LACEY THALER REILLY WILLSON ARCHITECTURE & PRESERVATION LLP  
"ALL RIGHTS RESERVED" AND "UNAUTHORIZED DUPLICATION IS A VIOLATION OF APPLICABLE LAWS"

A003

STAMP