



2 Winners Circle | Albany | New York | 12205

January 18, 2024



PIN 1762.29

ALBANY SHAKER ROAD CORRIDOR ENHANCEMENT

Town of Colonie, Albany County, New York

Submitted to:

Mr. Brent Meredith, Civil Engineer
County of Albany Department of Public Works
449 New Salem Road
Voorheesville, NY 12186

Table of Contents

Cover Letter 1

Project Approach 2

Similar Projects 3

Firm Capability 8

 Creighton Manning.....8

 Federally Funded Experience.....9

Staff Qualifications..... 11

Familiarity with Federal & State Requirements..... 19

Familiarity with Project Area..... 20

COVER LETTER

1.

January 18, 2024

Mr. Brent Meredith, Civil Engineer
449 New Salem Road
Voorheesville, NY 12186



RE: PIN 1762.29, Albany Shaker Road Corridor Enhancement RFQ, Town of Colonie, Albany County, New York

Dear Mr. Meredith:

Albany Shaker Road historically served as a farm to market road, which at that time, the farms were to the west and along Albany Shaker Road and the markets were in Downtown Albany along the Hudson River. Today the area has evolved, Albany Shaker Road is surrounded by residential land uses, and is lined with pedestrian destinations such as Frank's, Scoups, Stewarts and The Crossings. Located within walking distance from the corridor, Creighton Manning (CM) is anxious to improve the pedestrian accommodations and mobility through the corridor. Our team has staff who live in the corridor and our team drives and/or walks it every day and is thoroughly familiar with the improvement locations. Our proximity and familiarity will allow us to serve the County with sensitivity to local issues, be efficient and easily accessible for site visits.

The County's effort on the Albany Shaker Road Corridor Enhancement Project will significantly improve the mobility and safety for pedestrians of all ages and abilities. You need a consultant team that can make your project a reality through their local corridor knowledge, experience with the latest traffic signal equipment, and the knowledge to guide you through the Locally Administered Federal Aid (LAFA) process. Selecting Creighton Manning will ensure the successful completion of these improvements through:

Unique Project Experience. Creighton Manning is very familiar with the goals of the project having served as lead consultant on the Albany Shaker Road Corridor Study that recommended improvements to the project limits. We completed the design and construction inspection of the Shaker El Traffic Signal and completed the previous corridor wide design and construction inspection project. We will also be putting the Albany Shaker Road Safety Improvements project (PIN 1761.80) out to bid shortly which improves pedestrian safety at a couple intersection along the corridor. This experience provides our team with in-depth knowledge of the right-of-way, utilities, traffic signals, and the existing lane configurations. We feel this gives our team ***unmatched familiarity*** with the project, which will allow us to resolve any potential issues that may arise.

Qualified Staff. No other team on the Region 1 LDSA list has a greater depth of staff resources located in Albany with directly applicable traffic signal and pedestrian facility design experience. We have completed the analysis and design of pedestrian safety improvements at more than 300 PSAP traffic signal sites for NYSDOT. The CM Team has a proven track record of working effectively in the Town and Albany County on similar projects. Creighton Manning provides exceptionally qualified traffic engineers, highway engineers, surveyors and inspectors all with similar LAFA project experience and all located within a short distance of the corridor.

Experienced Management. Tony Christian, PE is an experienced project manager capable of guiding this project through challenges and would be the County's main point of contact. Tony is the Project Manager for the current safety improvements project and was also the lead for the recently completed ADA Transition Plan for the Town. Tony's ability to effectively manage transportation projects will benefit the County by keeping the project on schedule and on budget, without cost overruns and extras.

If you have any questions regarding our qualifications, please contact me directly at (518) 689-1824 or via email at dadams@cmellp.com. We look forward to helping the County complete this important project.

Respectfully submitted,

Creighton Manning Engineering, LLP

A handwritten signature in blue ink, appearing to read "Don Adams", is written over a light blue circular stamp.

Don Adams, PE, PTOE
Partner

PROJECT APPROACH

2.

Project Approach

The Creighton Manning approach to this project is straightforward:

- Evaluate and implement pedestrian facilities upgrades throughout the project limits. Existing traffic signals will be reviewed and upgraded to include video detection where needed
- Provide opposing left turn lanes at the intersection of Albany Shaker Road and the Crossings and a southbound left turn lane at the intersection of Albany Shaker Road and Everett Road
- Design an appropriate pavement rehabilitation treatment from Maxwell Road to Everett Road
- Investigate the condition of the existing drainage system and propose replacements where needed
- Coordinate with the Town of Colonie and CDTA to design sidewalks where they would be most beneficial
- Investigate and resolve sidewalk encroachments off the ROW at the Osborne Road intersection

CM's team of highway designers and traffic engineers are experts in the details required to deliver a successful project for the County. Through our past experience working on other similar projects and our current Albany Shaker Road project for the Town, we have identified the following potential tasks for this project and our approach to addressing each challenge:

TASK	APPROACH
ADA Compliance Assessment	Creighton Manning recently completed the ADA Transition Plan for the Town of Colonie. As part of this plan, all existing sidewalks and curb ramps were reviewed for ADA compliance, which included the pedestrian facilities on Albany Shaker Road. We will provide this data to the County and use this information to determine which facilities along the corridor need to be reconstructed to meet current standards. This plan will be used as a starting point to identify sidewalks in poor condition to be replaced.
Left Turn Lane Designs	While designing the opposing left turn lanes at the Crossings and the southbound left turn lane at Everett Road, we will look to avoid widening the road where possible. However, based on the survey we obtained for our current Albany Shaker Road project, the current road width at the intersection at the Crossings is approximately 36 feet wide. With Albany Shaker Road being classified as a Principal Arterial, the minimum lane widths are 11 feet. If bike lanes are accommodated through the intersection, widening the roadway will be necessary. We will look to avoid ROW and utility conflicts where possible and will widen the roadway where there is the least amount of impacts. At Everett Road, the existing pavement widths and geometry of the roadway allows for the addition of a southbound turn lane utilizing striping modifications without widening the roadway. The existing lane configurations will be analyzed during design to confirm what lanes are needed for the intersection capacity.
Pavement Rehabilitation	Creighton Manning will begin by evaluating the corridor to inventory the pavement condition and identify a pavement coring plan which will help determine the cause of the pavement distress, and if there are uniform characteristics for the length of the roadway. Once pavement cores and field investigation work are completed, we can identify the appropriate rehabilitation method for this section of roadway. Another key factor to ensure the success of pavement rehabilitation projects is excellent field personnel to oversee work and anticipate construction problems and delays before they occur. CM's inspectors have extensive experience implementing the guidance in the NYSDOT Standard Specifications for Highway construction. Further, our CI staff have up-to-date experience with pavement rehabilitation techniques and provide valuable insight throughout the design and construction processes.
Drainage System Review	As part of this project, CM will have the existing drainage system videoed to assess the existing condition of the drainage system. We will provide a report of our findings and propose replacements of pipes and structures that we find to be deteriorating based on our proposed designs.
Sidewalk Design	CM has a great working relationship with the Town of Colonie and CDTA as we are currently progressing multiple projects for both entities. Through thorough coordination, additional sidewalks will be proposed to meet the needs of the community based on pedestrian generators in the corridor.
ROW Assessment	The existing Osborne Road ROW presents challenges to installing new pedestrian facilities for the intersection. Based on ROW and survey we have already obtained, the highway boundary bisects the existing sidewalk on the southwest corner of the intersection. On the northeast and southeast corners, the ROW is directly on the backside of the existing hardscape and sidewalk, making it not feasible to install pedestrian signals within the public ROW. As part of this project, we will analyze the existing radii of all four corners based on turning movements and will propose to tighten the radii where possible. This approach will allow for more space within the public ROW to construct the necessary improvements.

SIMILAR PROJECTS

3.

Similar Projects

The following is a summary of relevant project experience involving similar types of services to public or private clients.



Albany Shaker Road Safety Improvements

Town of Colonie, Albany County, New York

Project Highlights:

- Pedestrian Signal Design
- ADA compliancy analysis
- Curb Ramp Design

Project Description:

This project involves two tasks in response to the recommendations made in the Albany Shaker Road Corridor Study from 2018. The tasks are pedestrian facilities upgrades at two (2) signalized intersections on Albany Shaker Road between Wolf Road and Everett Road; and speed limit reduction from Wolf Road to the City of Albany border.

Firm Role:

Creighton Manning is responsible for preliminary and final design and construction support/inspection. Services provided by Creighton Manning include:

- ADA-compliant curb ramp design
- Pedestrian signal design
- Survey and mapping
- Utility coordination
- Public outreach and involvement
- Cost estimating
- Project advertisement and award
- Construction inspection

Project Type:

Design and Construction Inspection

Client:

Town of Colonie Department of
Public Works
347 Old Niskayuna Road
Latham, New York 12110

Reference:

Katelyn Reepmeyer
(518) 867-3370

Design Budget:

\$89,500

Completion Date:

Ongoing



Signal Design Albany Shaker Road (CR 151)

Town of Colonie, Albany County, New York

Project Highlights:

- Traffic Signal Design
- Traffic Engineering Analysis

Project Description:

This project involved traffic engineering and design for a new traffic signal at the intersection of CR 151 and Shaker El – home to Shaker Road Elementary School. The project scope included traffic data collection signal warrant analysis, level of service analysis, design justification study, and design of a traffic signal including controller, detectors, pedestrian signals, signs and pavement markings, and WZTC. The design complied with the NYSDOT standards and specifications, and Manual of Uniform Traffic Control Devices.

Firm Role:

In addition to the above services, Creighton Manning also provided survey and construction inspection services.

Project Type:

Intersection Study and Signal Design

Client:

Albany County DPW

Reference:

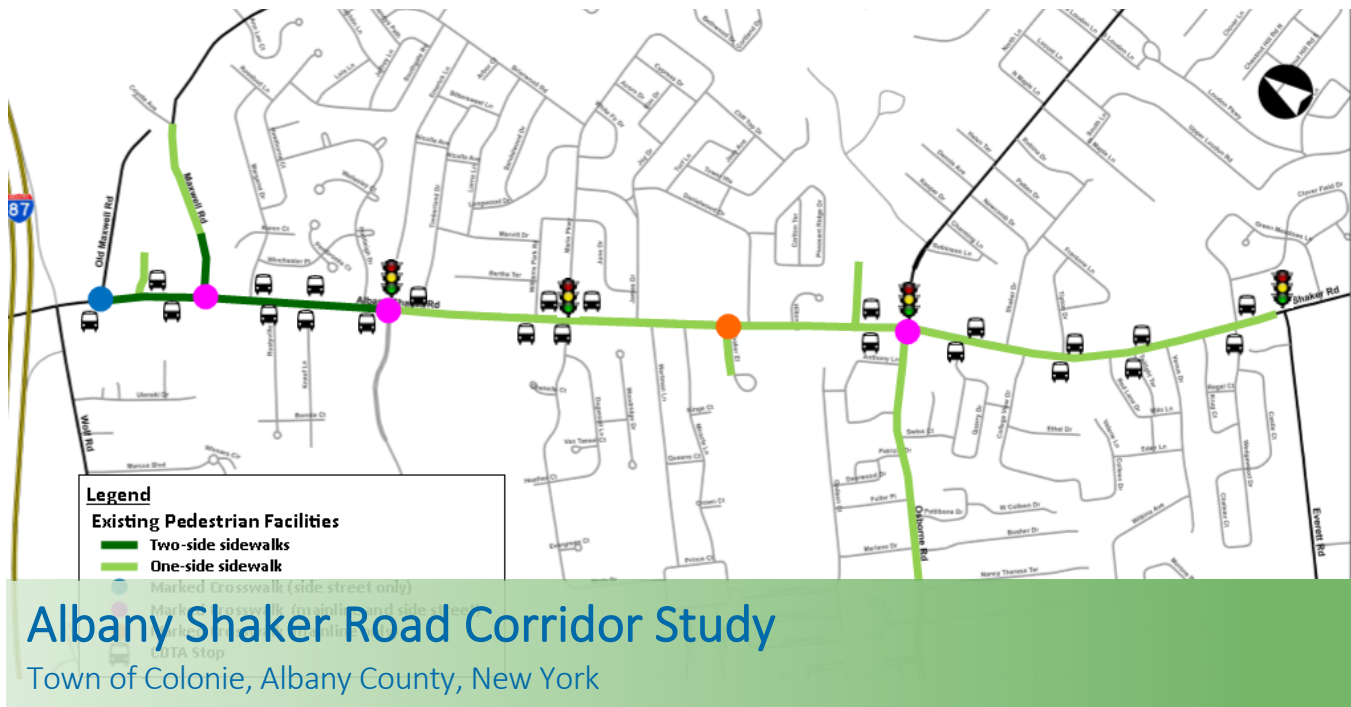
Lisa Ramundo, PE
(518) 765-2786

Construction Cost:

\$140,000

Completion Date:

2018



Project Highlights:

- Multimodal analysis and complete streets corridor concepts
- Safety and quality of life improvements

Project Description:

The Study analyzed problem areas in the Albany Shaker Road corridor between Old Maxwell Road and Everett Road; including traffic signal operations and delays, lack of turn lanes, pedestrian and bicycle use and infrastructure, and crash history. The study also considered future growth in the corridor to extrapolate how those problems may be affected by planned developments. The results of the land use and roadway assessments resulted in improvement measures that could optimize the corridor for all users.

Firm Role:

Creighton Manning led this planning study to develop recommendations for future multi-modal transportation improvement projects. The study included an existing conditions assessment of multi-modal operations, forecasts of future development and traffic growth, and robust public engagement effort in order to develop recommendations to improve safety and quality of life in and around the Albany Shaker Road corridor. The final study recommendations included reduced speed limits and traffic calming measures to achieve these reduced speeds, pedestrian infrastructure improvements including sidewalks and protected crossing treatments, and intersection safety improvements.

Project Type:

Corridor Study

Client:

Capital Region Transportation
Council (formerly CDTC)
One Park Place
Albany, NY 12205

Reference:

Chris O'Neill, Dave Jukins (Sandy
Misiewics – Current Director)
(518) 458-2161

Study Cost:

\$80,000

Completion Date:

2018





Madison Avenue Road Diet

City of Albany, Albany County, New York

Project Highlights:

- Implemented Feasibility Study into Design and Construction
- Complete Streets Approach in congested corridor

Project Description:

The City of Albany transitioned from a Feasibility Study of the Madison Avenue corridor, led by Creighton Manning, into a Locally-Administered Federal-Aid design and construction project. A Complete Streets approach was taken, a challenge in a high-profile corridor with many competing interests and a vocal public.

Firm Role:

Creighton Manning is the prime consultant responsible for highway design and construction inspection to design and implement a road diet along portions of Madison Avenue. Specific tasks include:

- Significant public coordination, including advocacy groups
- Evaluation of bicycle enhancement options to provide the best context-sensitive solution
- Reduction in travel lanes from two to four to reallocate space to bicycle lanes
- Design of colored pavement and complex bus/bicycle conflict zones
- Traffic signal replacements to upgrade pedestrian facilities

Leading the Feasibility Study involved traffic engineering and transportation planning required to evaluate the potential impacts of a road diet, and public participation. The analysis included accident analysis, traffic forecasting, use of traffic simulation software to model traffic operations for five alternatives, and cost estimates for the preferred alternative.

Project Type:

Highway Design/Construction
Inspection

Client:

City of Albany
10 Enterprise Drive
Albany, NY 12204

Reference:

William Trudeau
Coordinator of Traffic Engineering
(518) 434-4318

Study Budget:

\$3.5M

Completion Date:

2017



Freemans Bridge Road Multi-Use Path

Town of Glenville, Schenectady County, New York

Project Description:

This federally funded project includes the design and construction of a multi-use path along Freemans Bridge Road, linking the existing Mohawk-Hudson Bike Hike Trail and the existing path over Freemans Bridge to various commercial businesses and residences within the corridor. The scope of work includes the design of 4,700 feet of multi-use path on the west side of Freemans Bridge Road from Freemans Bridge to Dutch Meadows Lane. Pedestrian lighting will be constructed along the trail in order to provide better visuals of riders and pedestrians using the trail at night. The construction of the path will add to the current pedestrian network and provide pedestrians and bicyclists a safer means of travel as they currently use the existing narrow shoulder.

Firm Role:

Creighton Manning is responsible for preliminary and final design and construction support. Services provided by Creighton Manning include:

- ADA-compliant multi-use path design
- Pedestrian signal design
- Survey and mapping
- Utility coordination
- Public outreach and involvement
- Cost estimating
- Project advertisement and award
- Construction inspection

Project Type:

Highway Reconstruction

Client:

Town of Glenville
18 Glenridge Road
Glenville, NY 12302

Reference:

Chris Koetzle
(518) 688-1200

Construction Cost:

\$1,600,000 estimated

Completion Date:

On-Going



FIRM CAPABILITY

4.

Firm Capability



Creighton Manning Engineering, LLP (CM) is a transportation engineering, planning, and surveying firm with its headquarters in Albany, and branch offices in White Plains and Poughkeepsie. The firm has been providing professional transportation services throughout New York State since 1965 and has established a reputation for working collaboratively to find innovative solutions. The firm has extensive experience in the Capital Region with feasibility studies and design of the following:

- Trails, Multi-Use Paths, and Sidewalks
- Complete Streets and Intersections
- Parking Lots and Trail Heads
- Town Parks
- Transportation Safety Improvements
- Bridges, Culverts, and Retaining Walls
- Traffic Signals

For 59 years, Creighton Manning has been recognized across New York State for its expertise in local and regional transportation planning and engineering. The firm has 100 employees including 35 licensed professionals and continues to grow while maintaining our specialization in transportation services. This project will be managed by Tony Christian, one of the 14 transportation engineers who specialize in trail, sidewalk, and pedestrian infrastructure projects.

CREIGHTON MANNING ENGINEERING, LLP

Organizational Structure:

Limited Liability Partnership

Number of Years in Business: 59 years

Number of Employees: 100

Contacts:

Anthony (Tony) Christian, PE, Project Manager
achristian@cmellp.com
518.689.1880 (direct)

Public Participation

Transportation projects in developed areas have unique challenges that typically include limited right-of-way, utility conflicts, and high public interest. Creighton Manning has completed numerous projects that have required public involvement and the ability to utilize feedback combined with engineering and agency input to form a consensus decision. The firm's community participation has ranged from individual meetings with affected property owners, to small presentations to town boards, and technical presentations at large-scale public hearings. With a properly structured public participation process, officials, interest groups and the public are given opportunities to voice their concerns, provide input to the process, and learn more about the details of the project. Our experience and lessons learned (including security issues and logistics) will benefit the County.

Survey and Mapping

Creighton Manning has three licensed land surveyors in our Colonie office who each have more than 30 years of experience, two permanent field crews, seasonal crews, and office support staff. The firm has prepared numerous highway boundary surveys, topographic surveys, construction stakeout, boundary monumentation, and utility surveys for local municipalities, and state agencies, including NYSDOT. CM has also prepared the necessary research, acquisition mapping and deeds, control reports, and descriptions for trail projects. Creighton Manning's survey crews are proficient with modern survey technology and use conventional total stations, robots and GPS.

Federally Funded Experience

Creighton Manning understands that every project is unique. The setting and character of the area, the values of the community, the needs of multi-modal transportation system users, and the challenges and opportunities are unique factors that our team considers with all projects. We bring considerable transportation design and expertise to this project, including sidewalk and pedestrian safety design.

The following is a summary of relevant federally funded project experience.

FEDERALLY FUNDED EXPERIENCE



Pedestrian Safety Action Plan (PSAP) Improvements

City of Kingston, Ulster County, New York

Creighton Manning provided survey, design, and construction of ADA-compliant pedestrian facilities at six (6) different locations for this LAFA project. Intersection improvements will include ADA ramps, upgrades to crosswalk markings, retroreflective signposts, rectangular flashing beacons, pedestrian median refuge islands, curb extensions and pedestrian signals.



Estimated Completion Date: Spring 2022
Actual Completion Date: Spring 2022



Sand Lake Hamlets Sidewalk Enhancements

Town of Sand Lake, Rensselaer County, New York

Creighton Manning provided existing conditions, utility, topographic and right-of-way survey and the design of approximately 2,600 feet of sidewalks and a 1,475-foot long multi-use path along NY Route 43 and NY Route 66. The design includes pedestrian improvements at the intersection of NY Route 66 and NY Route 43 and the replacement of individual sidewalk panels and curbing within the Hamlet of West Sand Lake to bring the facilities up to ADA compliance.

Estimated Completion Date: Fall 2022
Actual Completion Date: Fall 2022

Lake Street Rehabilitation, Phase 1 and 2

Village of Monroe, Orange County, New York

Creighton Manning provided design services for the rehabilitation of Lake Street from Millpond Parkway to Stage Road. The work included sidewalk reconstruction and pavement rehabilitation of a downtown street section, including curb, retaining wall rehabilitation, and traffic signal replacement. The project incorporated Complete Streets pedestrian treatments in the form of curb extension to facilitate ADA compliant curb ramp installations and decorative crosswalk markings. The traffic signal design included ADA compliant pedestrian buttons and indications, wireless in-pavement vehicle detection and ornamental pedestrian poles and mast arm poles to blend into the historic character of the Village. Subsequent TAP funding was secured for future project phases.



Estimated Completion Date: Fall 2021
Actual Completion Date: Fall 2021



Cairo and Greenville Pedestrian Improvements

Town of Cairo and the Town of Greenville, Greene County, New York

This TAP funded project included the design and construction of pedestrian infrastructure improvements in the Town of Cairo and the Town of Greenville. In Cairo, the scope of work included the design of 2,500 feet of sidewalks along Main Street (CR 23B) and 1,900 feet of a stone dust pathway extending from William Dinger Street to State Route 32. In Greenville, the scope of work included 3,000 feet of sidewalks along NY Route 32 and the reconstruction of an elevated storefront walkway on NY Route 81. Pedestrian signal upgrades were also designed for the intersection of NY Route 81 and NY Route 32.

Estimated Completion Date: Spring 2021
Actual Completion Date: Spring 2021

Rosa Road/Wendell Avenue/Nott Street Intersection Improvements

City of Schenectady, Schenectady County, New York

Creighton Manning was responsible for project oversight and development of design alternatives for this intersection improvement project to improve pedestrian safety and accommodations at this City's busy intersection. The project involves installation of a new five leg traffic signal and controller with pedestrian push buttons, design of refuge islands with high-visibility crosswalks to improve the more than 100' long crossings.



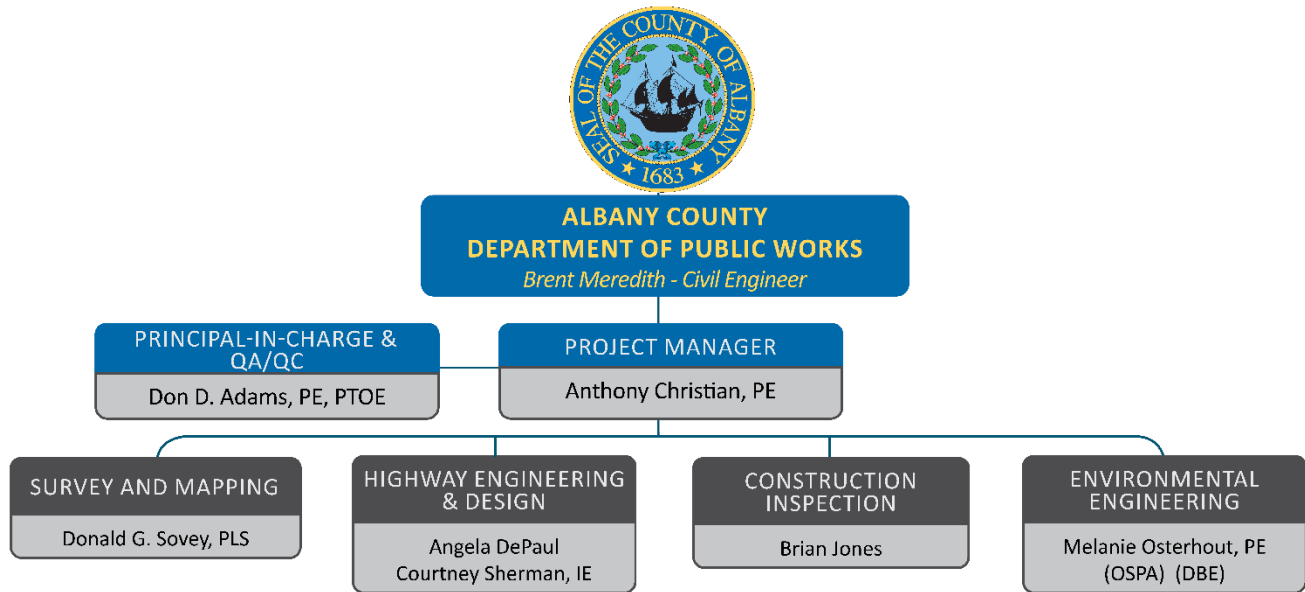
Estimated Completion Date: Spring 2023
Actual Completion Date: Spring 2023

STAFF QUALIFICATIONS

5.

Staff Qualifications

Organizational Chart



Resumes of key personnel assigned to this project are provided in the next pages.

Don D. Adams, PE, PTOE

Principal-in-Charge & QA/QC

PROFESSIONAL EXPERIENCE SUMMARY

Mr. Adams has 34 years' experience in a variety of multi-modal surface transportation engineering projects. He has completed corridor studies, highway and traffic signal design projects, rail and transit projects as well as traffic impacts studies. He is a certified Professional Traffic Operations Engineer (PTOE) with diverse public participation experience working with steering committees, making public presentations and managing stakeholders.

RELEVANT PROJECT EXPERIENCE

Albany Shaker Road Safety Improvements, Town of Colonie, Albany County, NY. Principal-in-Charge & QA/QC for this project that involves two tasks in response to the recommendations made in the Albany Shaker Road Corridor Study from 2018. The tasks are pedestrian facilities upgrades at two (2) signalized intersections on Albany Shaker Road between Wolf Road and Everett Road; and speed limit reduction from Wolf Road to the City of Albany border.

Albany Shaker Road Corridor Study, Town of Colonie, Albany County, NY. Project Manager for the development of recommendations for multi-modal improvements and complete streets implementation for the Albany Shaker Road corridor. The study addressed safety and quality of life concerns for adjoining residences and businesses, as well as pedestrians, bicyclists, and motor vehicle drivers and coordinated with the Town's Comprehensive Plan update project to allow for integration with the plan. Don was responsible for leading the planning effort, development of alternatives, and public participation.

Albany Shaker Road/Shaker El Highway Improvements Town of Colonie, Albany County, NY. Senior Project Manager responsible for QA/QC of the design of a new Albany County traffic signal and pedestrian accommodations at an existing intersection entrance to an elementary school. The project included design of a new signal, coordination with the adjacent Osborne Road intersection, and coordination with underground and overhead utility companies to avoid potential conflicts.

Planning & Design for Freemans Bridge Gateway, Town of Glenville, Schenectady County, NY. Principal-in-Charge & QA/QC responsible for the planning, feasibility, and preliminary design for the redevelopment and revitalization of the Freemans Bridge-Mohawk Riverfront gateway, a key entry point into the Town of Glenville adjacent to the City of Schenectady. The project developed alternatives for the design of streetscape improvements including landscaping, signage, bicycling facilities, pedestrian walkways, sidewalks, trails, crosswalks and other pedestrian safety enhancements along the waterfront gateway corridor.

Professional Registration:

- *Professional Engineer (NY)*
- *Certified Professional Traffic Operations Engineer*

Total Years of Experience: 34

Years with firm: 19

Education:

- *B.S., Civil Engineering, 1990*
Clarkson University

Professional Affiliations:

- *Institute of Transportation Engineer (ITE)*
- *American Society of Civil Engineers (ASCE)*
- *NYS Association of Transportation Engineers (NYSATE) – Member*

Anthony Christian, PE

Project Manager

PROFESSIONAL EXPERIENCE SUMMARY

Tony is a Project Manager with 15 years of experience in sidewalk and trail design, highway design, including geometric design, highway signage, and work zone traffic control.

RELEVANT PROJECT EXPERIENCE

Albany Shaker Road Safety Improvements, Town of Colonie, Albany County, NY. Project Manager for this project that involves two tasks in response to the recommendations made in the Albany Shaker Road Corridor Study from 2018. The tasks are pedestrian facilities upgrades at two (2) signalized intersections on Albany Shaker Road between Wolf Road and Everett Road; and speed limit reduction from Wolf Road to the City of Albany border.

Madison Avenue Complete Streets Phase 2, PIN 1760.25, City of Albany, Albany County, NY. Project Engineer responsible for final plan design of improvements along Madison Avenue from Partridge Street to Lark Street. The project implemented a reduction of vehicle travel lanes from four to two while also including conventional bike lanes in the reallocated space as well as required traffic signal upgrades. The project also included the reconstruction of sidewalks, curb ramps, and curbing along the corridor to meet ADA guidelines.

Albany Streetscape Design & Construction Phase Services, City of Albany, Albany County, NY. Project Manager responsible for the design and reconstruction of Clinton Avenue from Broadway to N. Hawk Street in the City of Albany. Tony was also responsible for producing three concepts for a gateway element with the chosen alternative being a decorative, columnar structure with lighting. Tony assisted with producing materials for community outreach and technical advisory committee meetings.

Columbia Street Pedestrian Accessibility and SRTS Enhancements, PIN 1762.32, City of Cohoes, Albany County, NY. Project Manager for this \$5.7 million federal aid project involves the rehabilitation of 7000 LF of Columbia Street using a Complete Streets approach to improve pedestrian and bicycle accommodations. The design includes asphalt milling and overlay, a closed drainage system, green infrastructure practices, and five traffic signals with pedestrian accommodations.

Professional Registration:

- *Professional Engineer (NY)*

Total Years of Experience: 15

Years with firm: 10

Education:

- *B.S., Civil Engineering, 2009, Virginia Tech, Blacksburg, VA*

Professional Affiliations:

- *ASCE*

Angela DePaul

Project Engineer

PROFESSIONAL EXPERIENCE SUMMARY

Angela is an Assistant Engineer with experience in surface transportation design for local municipalities, NYSDOT, and private sector clients. Areas of work include geometric design, highway signage, pedestrian safety, bicycle facilities, lighting design and work zone traffic control.

RELEVANT PROJECT EXPERIENCE

Columbia Street Pedestrian Accessibility and SRTS Enhancements, PIN 1762.32, City of Cohoes, Albany County, NY. This \$5.7 million federal aid project involves the rehabilitation of 7000 LF of Columbia Street using a Complete Streets approach to improve pedestrian and bicycle accommodations. The design includes asphalt milling and overlay, a closed drainage system, green infrastructure practices, and five traffic signals with pedestrian accommodations.

US Route 4 Transportation Improvements, Town of North Greenbush, Rensselaer County, NY. Project Engineer for the design and construction of this locally administered federal aid project that includes geometric improvements to three intersections along the US Route 4 Corridor in North Greenbush. The project also consists of pedestrian improvements along the corridor. Angela was responsible for assisting the project team with final design tasks, as well as roundabout lighting design.

Cherry Avenue Extension (NY Route 140) Multi-Use Path, PIN 1762.46, Town of Bethlehem, Albany County, NY. Project Engineer for this Region 1 federal aid project includes construction of a 10-foot-wide 0.9-mile-long paved multi-use path along the length of Cherry Avenue Extension between Kenwood Avenue and New Scotland Road. The design includes a separated path, pedestrian enhancements including crosswalks and signal upgrades, roadway improvements and landscaping.

Freemans Bridge Road Sidewalks and Path, PIN 1762.49, Town of Glenville, Schenectady County, NY. Design Engineer for this \$3.3 million federal aid project involves the design and construction of 3700 linear feet of sidewalks and 3700 linear feet of a multi-use path along the east side of Freemans Bridge Road in the Town of Glenville. Pedestrian signals will be added to all signalized intersections along the corridor to provide safe crossings for all users. The design also includes milling and resurfacing Freemans Bridge Road from Freemans Bridge to NY Route 50 with video detection to be added to each of the existing traffic signals within the project limits.

Total Years of Experience: 6

Years with firm: 6

Education:

- *B.S., Civil Engineering, 2018, Clarkson University, Potsdam, NY*

Professional Affiliations:

- *American Society of Highway Engineers (ASHE)*
- *American Society of Civil Engineers (ASCE)*

Courtney Sherman, IE

Junior Engineer

PROFESSIONAL EXPERIENCE SUMMARY

Courtney is a Junior Engineer with experience in highway design projects for local municipalities, NYSDOT, and private sector clients. Areas of work include geometric design, highway signage, pedestrian safety, bicycle facilities, and work zone traffic control.

RELEVANT PROJECT EXPERIENCE

Albany Shaker Road Safety Improvements, Town of Colonie, Albany County, NY. Design Engineer for this project that involves two tasks in response to the recommendations made in the Albany Shaker Road Corridor Study from 2018. The tasks are pedestrian facilities upgrades at two (2) signalized intersections on Albany Shaker Road between Wolf Road and Everett Road; and speed limit reduction from Wolf Road to the City of Albany border.

Cherry Avenue Extension (NY Route 140) Multi-Use Path, PIN 1762.46, Town of Bethlehem, Albany County, NY. Junior Engineer for this Region 1 federal aid project includes construction of a 10-foot-wide 0.9-mile-long paved multi-use path along the length of Cherry Avenue Extension between Kenwood Avenue and New Scotland Road. The design includes a separated path, pedestrian enhancements including crosswalks and signal upgrades, roadway improvements and landscaping.

NYSDOT Reimagine I-787 PEL Study, Albany, NY. This \$5 million Planning and Environmental Linkage (PEL) study aims to investigate the Interstate 787 Corridor and its proximity to the Hudson River. The study deliverables will advance the findings of previous studies which recommended additional analysis on four I-787 corridor areas. These four areas include CP Rail Facility modification/relocation/operations analysis, I-787/Dunn Memorial Bridge/South Mall Expressway Interchange and South Mall Expressway reconfiguration, Albany Inner Harbor Marina/Historic District development concepts, and other I-787 access opportunities.

Freemans Bridge Road Sidewalks and Path, PIN 1762.49, Town of Glenville, Schenectady County, NY. Junior Engineer for this \$3.3 million federal aid project involves the design and construction of 3700 linear feet of sidewalks and 3700 linear feet of a multi-use path along the east side of Freemans Bridge Road in the Town of Glenville. Pedestrian signals will be added to all signalized intersections along the corridor to provide safe crossings for all users. The design also includes milling and resurfacing Freemans Bridge Road from Freemans Bridge to NY Route 50 with video detection to be added to each of the existing traffic signals within the project limits.

Total Years of Experience: 2

Years with firm: 2

Education:

- *B.S., Civil Engineering, 2022, Clarkson University, Potsdam, NY*

Professional Affiliations:

- *New York State Association of Transportation Engineers (NYSATE) -Member*
- *American Society of Civil Engineers (ASCE)*

Donald G. Sovey, PLS

Chief of Survey

PROFESSIONAL EXPERIENCE SUMMARY

Don is a licensed Professional Land Surveyor with 38 years of applicable and practical experience in New York. His surveying and project management background consists of experience acquired on boundary/right-of-way surveys, topographic surveys, and on construction stakeout projects. He is in charge of all aspects of survey including proposals, scheduling, research, computations, and fieldwork. Don also manages project budgets and provides quality control.

RELEVANT PROJECT EXPERIENCE

Albany Shaker Road Safety Improvements, Town of Colonie, Albany County, NY. Chief of Survey responsible for existing conditions, utility, topographic and right-of-way survey for this project that involves two tasks in response to the recommendations made in the Albany Shaker Road Corridor Study from 2018. The tasks are pedestrian facilities upgrades at two (2) signalized intersections on Albany Shaker Road between Wolf Road and Everett Road; and speed limit reduction from Wolf Road to the City of Albany border.

Sand Lake Hamlets Sidewalk Enhancement Project, Town of Sand Lake, Rensselaer County, NY. Chief of Survey responsible for existing conditions, utility, topographic and right-of-way survey for the design of approximately 2,600 feet of sidewalks and a 1,475-foot long multi-use path in the Town of Sand Lake on NY Route 43 and NY Route 66. The project was tied into the NYS Plane Coordinate System (NAD 83/2011 and NAVD 88). The design includes pedestrian improvements at the intersection of the state routes and replacement of individual sidewalk panels and curbing within the Hamlet of West Sand Lake to bring the facilities up to ADA compliance.

Voorheesville Pedestrian Connectivity, Village of Voorheesville, Albany County, NY. Chief of Survey responsible for existing conditions, utility, topographic and right-of-way survey for the construction of pedestrian improvements along NY Route 156, NY Route 85A and County Road 306 within the Village of Voorheesville. The project, which was tied into the NYS Plane Coordinate System (NAD 83/2011 and NAVD 88) will provide ADA-compliant pedestrian accommodations.

Lake Street Rehabilitation, Village of Monroe, Orange County, NY. Chief of Survey responsible for field survey and mapping for this village street rehabilitation project. The project involved pavement rehabilitation of a downtown street section with full depth curb and sidewalk reconstruction, retaining wall rehabilitation, street lighting and traffic signal replacement.

Professional Registration:

Professional Land Surveyor (NY, VT)

Total Years of Experience: 38

Years with firm: 25

Education:

- *B.A., Environmental Science
1985, Plattsburgh State
University*

Professional Affiliations:

- *NYS Association of
Professional Land Surveyors*
- *Eastern New York Society of
Land Surveyors*
- *Vermont Society of Land
Surveyors*

Brian W. Jones

Construction Manager

PROFESSIONAL EXPERIENCE SUMMARY

Mr. Jones has over 19 years of experience as an Engineering Technician and Construction Inspector. He is certified as an ACI-Grade 1 Field Technician and also as a Soils and Aggregate Inspector. He is trained in the use of Site Manager and APPIA. He has experience as Project Manager, Resident Engineer, Office Engineer and Senior Inspector for a wide range of inspection projects. He has a working knowledge of the NYSDOT Specifications, M.U.R.K. and the M.U.T.C.D.. He performs the construction administration for inspection projects including running pre-construction meetings, contract quantity tracking software (APPIA) setup, identifying/implementing field design changes, change orders, coordination with Resident Engineers, supervision of inspection staff, owner coordination, progress meetings, final quantities, and final project closeout. He ensures that projects are administered and constructed in accordance with the plans & specifications, the M.U.R.K. manual, the M.U.T.C.D., as well as NYSDOT and FHWA reimbursement requirements. He reviews and updates information in EBO to ensure EEO and DBE project goals are obtained.

RELEVANT PROJECT EXPERIENCE

Albany Shaker Road/Shaker El Highway Improvements Town of Colonie, Albany County, NY. Resident Engineer for the construction inspection of a new Albany County traffic signal and pedestrian accommodations at an existing intersection entrance to an elementary school. The project included installation of a new traffic signal and coordination with underground and overhead utility companies to avoid potential conflicts.

LFTC Sidewalk Connection and Complete Streets/Blacksmith Square Drive Sidewalk (PIN 1MS155.30A/1MA223.30A) Town of Malta, Saratoga County, NY. Construction Manager for this \$1.7M project responsible for resident engineer oversight for complete streets improvements along US Route 9 and Blacksmith Square Drive. The project includes ADA-compliant sidewalks, raised landscaped median and mid-block crossing with high visibility crosswalks and RRFB's. Responsibilities included providing appropriately trained & certified inspection staff who would ensure the work of the contractor conforms to the provisions of the contract documents.

Voorheesville Pedestrian Connectivity Project, Village of Voorheesville, Albany County, New York. Project Manager for the construction of ADA compliant sidewalk installation. Installation also included curb, asphalt, signs and a modular block retaining wall. Responsible for managing the inspection staff which included a Resident Engineer. Additional duties included coordination between Albany County and NYSDOT to ensure FHWA reimbursement of all work that was performed.

Total Years of Experience: 19

Years with firm: 18

Education:

- *B.S., Civil Engineering Technology, 2005, SUNY Institute of Technology*

Professional Affiliations:

- *American Society of Certified Engineering Technicians, Member*



**Melanie C. Osterhout, PE
President/Project Manager**

Ms. Osterhout has more than 25 years of comprehensive civil and environmental engineering experience. Ms. Osterhout is experienced in all aspects of project permitting (wetlands, coastal zones, navigable waters, surface waters, erosion hazard zones and state owned land easements), wetland delineation, stormwater management design, the preparation of Environmental Impact Statements and Stormwater Pollution Prevention Plans, the NEPA and SEQR processes, site design, design plan preparation, remedial investigations and the design of plans for the protection of wetlands.

EDUCATION

B.S., Civil Engineering, Clarkson University, May 1995

PROFESSIONAL REGISTRATION

Professional Engineer: New York, 2001, No. 078778, Connecticut, 2000, No. 21672

NYS Licensed Asbestos Project Designer, Asbestos Inspector, ASHE Local and Regional Board of Director's

PROFESSIONAL EXPERIENCE

OSPA Engineering Services, PC (2011-Present)

Route 306 Pedestrian Sidewalks, Town of Ramapo, NY (2015-2018) Project manager responsible for the preparation of the environmental impact analysis for this federally funded (LDSA) project under NEPA/SEQR. Specific elements included wetlands delineation, permitting requirements, hazardous materials, the preparation of an endangered and threatened species evaluation document, Historic and Cultural Resource impacts evaluations, a SWPPP and the preparation of the environmental sections (Chapter IV) of the design report for the new construction of sidewalks.

Bethlehem Sidewalk and Intersection Reconstruction Project, Bethlehem, Albany County, NY (2017-2020) Project manager responsible for the wetlands delineation, reports and permit preparation for this federally funded TIP set aside project. Specific elements included wetlands delineation, wetlands impact evaluations and permitting requirement evaluations. In addition, responsible for obtaining the required permits for the project.

Saugerties Bluestone Sidewalk Improvement Project, Village of Saugerties, Ulster County, NY (2015-2016) Project manager responsible for the preparation of the environmental impact analysis for this federally funded (LDSA) project under NEPA/SEQR. Specific elements included site walkover for wetlands, permitting requirements, hazardous materials, and historic resources, the preparation of an endangered and threatened species evaluation document, Historic and Cultural Resource impacts evaluations and the preparation of the environmental sections (Chapter IV) of the design report for the new construction and replacement of sidewalks on several streets in Saugerties, NY. SEQRA and NEPA Approvals were required in addition to clearances through OPRHP, NYSDEC and USFWS.

Adirondack Rail Trail Project, Lake Placid to Tupper Lake, NY (2017-2023) Project manager responsible for the preparation of the wetlands delineation, mitigation design and impact permitting, endangered and threatened species review, surface soils sampling for volatile organic compounds, semi volatile organic compounds and metals and SHPO coordination. Project elements included wetlands delineation along the entire corridor, analysis of sites along the corridor in multiple drainage basins for mitigation suitability, the design of 0.8 acres of mitigation area (2 sites), wetland impact permitting with the NYSDEC, APA and USACE, evaluation of the corridor habitat for listed endangered and threatened species and over a year of coordination with APA, NYSDEC and USACE for the permitting process.

Neversink River Trail, Fallsburg, Sullivan County, NY (2021-2023) Project manager responsible for providing the preparation of the wetlands and waterways impacts for this proposed trail project. Project work included a wetlands delineation, preparation of the Delineation Report and evaluation of the permitting requirements.

FAMILIARITY WITH FEDERAL & STATE REQUIREMENTS

6.

Familiarity with Federal and/or State Requirements

Our staff maintains a thorough understanding of Federal Highway Administration (FHWA) and NYSDOT Policies, Standards and Specifications. Creighton Manning has completed or is currently progressing more than 80 LAFA projects that vary in size and scope including sidewalks, trails, traffic signals, highway reconstruction, bridge replacement, and construction inspection projects. We have a proven track record of complying with all applicable Federal, State, and local regulations.

Our staff is up-to-date with the latest analysis tools and procedures for processing Federal Aid projects, particularly LAFA projects. We have worked successfully under the guidance of the NYSDOT Region 1 Local Projects Unit to deliver projects that satisfy the needs of the sponsoring municipality and comply with the Federal and State regulations, policies and procedures. Our experience ensures the County will be reimbursed by NYSDOT for project costs.

We will provide the County with consistent communication to advise what decisions are needed and when they need to be made. We also understand that the County will be responsible for any cost overruns and will revise the project scope to stay within budget or advise the County of the need for supplemental local funding.

Webster Avenue Pavement Preservation, PIN 1762.00, City of Glens Falls, Warren County, NY. Creighton Manning is responsible for preliminary and final design for the rehabilitation of Webster Avenue, to improve the pavement conditions and pedestrian and bike facilities. The project includes operational improvements to Webster Ave/Glen Street/Fire Road intersection. *Client: City of Glens Falls; Professional Services Completion Date: 2024*

Columbia Street Pedestrian Accessibility and SRTS Enhancements, PIN 1762.32, City of Cohoes, Albany County, NY. This \$5.7 million federal aid project involves the rehabilitation of 7000 LF of Columbia Street using a Complete Streets approach to improve pedestrian and bicycle accommodations. The design includes asphalt milling and overlay, a closed drainage system, green infrastructure practices, and five traffic signals with pedestrian accommodations. *Client: City of Cohoes; Professional Services Completion Date: 2024, Construction Completion Date: 2024*

Willow Tree Road ADA-Compliant Sidewalk System, PIN 8762.88, Village of Wesley Hills, Rockland County, NY. The project will construct sidewalks along Willow Tree Road, from Wilder Road to NY Route 306, approximately 3,700 feet in length. The sidewalks are to be located on the north side of Willow Tree Road in the Village of Wesley Hills. Crosswalks will be added for the crossing of Dike Drive and Windward Lane. The project will also construct a culvert extension approximately 400 feet east of Windward Lane to accommodate the sidewalks. Existing retaining walls along the roadway will be reconstructed where necessary. A crossing into the Willow Tree Town Park will also be reviewed for feasibility as part of this project. *Client: Village of Wesley Hills; Professional Services Completion Date: 2024, Construction Completion Date: 2024*

Albany Streetscape Design & Construction Phase Services, City of Albany, Albany County, NY. This DRI project involved the design and reconstruction of Clinton Avenue from Broadway to N. Hawk Street in the City of Albany. Three concepts for the inclusion of bike facilities on the roadway were developed for the corridor. The final design chosen included the addition of buffered bike lanes on both sides of the road while allowing parallel parking along the curb line. The existing sidewalks along the corridor were also reviewed for ADA compliancy. New sidewalks from Broadway to N. Hawk Street will be constructed with a stamped and colored concrete maintenance strip. The project also included the construction of a gateway element as vehicles enter the City on Clinton Avenue. *Client: City of Albany Department of Development and Planning; Professional Services Completion Date: 2024 estimated*

Union Avenue Sidewalks, PIN 8762.51, Town/Village of Harrison, Westchester County, NY. Creighton Manning was responsible for the preliminary and final design for this \$3.0 million TAP-funded project that constructed one mile of new sidewalk along Union Avenue including seven new crosswalks, fifteen ADA ramps, and 2,800 SF of new curb. *Client: City of Glens Falls; Professional Services Completion Date: 2024 estimated*

FAMILIARITY WITH PROJECT AREA

7.

Familiarity with Project Area

Creighton Manning's key staff are located less than 1 mile from the project corridor and 13 miles from the County's office. Our proximity will allow us to serve the County efficiently and will facilitate frequent site visits. We are very familiar with this project based on our relevant project experience, most notably the Albany Shaker Road Corridor Study for the CRTC and the ongoing federally funded Albany Shaker Road Safety Improvements project. We also recently completed the ADA Transition Plan for the Town of Colonie. For the development of the transition plan, existing condition data for all pedestrian facilities were documented and can be used as a baseline for this project for replacements. Additionally, several key staff live near the project location, with children that attend Shaker Road Elementary and participate in Walk to School, and Bike to School days. This makes the project personal for our staff. Through our ongoing involvement and history in the corridor, we bring to your attention the following improvement specific considerations that the CM team is aware of and will address during the design and construction:

1. Albany Shaker Road at The Crossings – The addition of signalized crossings on the remaining legs of the traffic signal will not increase the delay at this location, as the traffic signal current provides an all pedestrian crossing phase anytime someone uses the push button. This means there will not be a reduction in vehicle delays at this intersection.
2. Albany Shaker Road and Marie Parkway – As part of the Albany Shaker Road Safety Improvements project, pedestrian improvements at this location will include new pedestrian signal heads and push buttons, ADA compliant curb ramps on all corners, and new crosswalks and stop bars. The existing median island on Maria Drive will also be removed to better accommodate turning vehicles onto the roadway.
3. Albany Shaker Road at Shaker Elementary School – This intersection is also included in the Albany Shaker Road Safety Improvements project. New crosswalks will be added to the south and west of the legs with new curb ramps, crosswalks, and pedestrian signals to be added as well.
4. Albany Shaker Road and Osborne Road – In addition to providing crosswalks on all four legs of the intersection, Creighton Manning recommends the consideration of evaluating the turning radii with the potential of reducing turning vehicle speeds and shortening the crosswalk lengths. The addition of pedestrian crossings will warrant further evaluation of the traffic signal operation and potential impacts with the coordination of the adjacent traffic signals.
5. Albany Shaker Road and Everett Road – The addition of pedestrian accommodations on all four legs will require grading to accommodate the ADA pedestrian ramps and access to push buttons, particularly on the east side of the intersection where the site grades are relatively steep.

We also understand that as part of the ongoing design project, the speed limit will be reduced from Wolf Road to the Albany city line and driver feedback signs will also be installed to enforce the speed limit change. During the preliminary design phase of the Albany Shaker Road Safety Improvements project, Creighton Manning performed the survey and ROW for all five intersections noted above. In addition to saving the County time and money from already obtaining that information, we feel that our prior experience working in the corridor gives us *unmatched familiarity* with the area.



2 Winners Circle | Albany | New York | 12205
www.cmellp.com | 518.446.0396