

## **COUNTY OF ALBANY**

*Architect/Engineer Consulting Services  
for Various Projects at the MVP Arena  
RFP #2022-054*

JUNE 3, 2022



*AN ISO 9001:2015 CERTIFIED COMPANY*

Ms. Pamela O Neill  
Albany County Purchasing Agent  
112 State Street, Room 1000  
Albany, NY 12207

**Re: Architect/Engineer  
Consulting Services for  
Various Projects at the MVP  
Arena RFP #2022-054**

JUNE 3, 2022

Dear Ms. O Neill,

Thank you for this opportunity to offer our qualifications in response to the RFP titled, Architect/Engineer Consulting Services for Various Projects at the MVP Arena RFP #2022-054. As specified, we have sent 5 copies of our submission.

**Delta Engineers, Architects, Land Surveyors, & Landscape Architects, DPC (Delta)** is a full service engineering, architectural, and survey & mapping firm that was established in 1976. We deliver a comprehensive range of engineering, architectural, environmental, specialty precast, ecological services, and survey and mapping services to public and private clients throughout the United States. **Delta's** professional staff of 29 licensed engineers, architects, and surveyors will bring decades of experience to this project for Albany County. In addition, our versatile support staff of 89 designers, technicians, industrial hygienists, cost estimators, surveyors and administrative staff provides cost-efficient and customer-focused project services.

Our project manager and primary point of contact for this project is David Newton. Mr. Newton will be our contact for any questions that you have regarding our qualifications, and for any requests for additional information regarding **Delta**.

We look forward to the opportunity to work with you. If you have questions or would like additional company background, please feel free to contact me directly at 607-231-6610 or David Newton at 518-690-0049.

Respectfully,

**DELTA ENGINEERS, ARCHITECTS, LAND SURVEYORS, & LANDSCAPE ARCHITECTS, DPC**



Anthony R. Panicia, PE, JD  
President and CEO

# TITLE PAGE

**County of Albany**  
**Request for Proposals**  
**Albany County Department of General Services**

*Architect/Engineer Consulting Services for  
Various Projects at the MVP Arena  
RFP #2022-054*



220 Harborside Drive Suite 202  
Schenectady, NY 12305

**PROJECT MANAGER**

David Newton  
(518) 690-0049  
dnewton@delta-eas.com

# TABLE OF CONTENTS

## SECTION I

- Title Page
- Table of Contents

## SECTION II

- Qualification / Experience
- Relevant Projects
- Organizational Chart
- Resumes

## SECTION III

- References

## SECTION IV

- Plan Implementation

## SECTION V

- Cost Proposal

## SECTION VI

- Mandatory Documentation
  - Proposal Form
  - Non-Collusive Bidding Certificate (Attachment A)
  - Acknowledgement by Proposer (Attachment B)
  - Vender Responsibility Questionnaire (Attachment C)
  - Iran Energy Divestment Certification (Attachment D)



# QUALIFICATION / EXPERIENCE

## FIRM OVERVIEW

### WHO WE ARE

**Delta Engineers, Architects, & Surveyors (Delta)**, an **ISO 9001:2015 certified company**, was founded in 1976 and has grown from pure civil engineering roots into a 118 person multidisciplinary professional services firm that delivers a wide range of services targeted to clients in eight primary market sectors: Facilities Engineering, Architecture, Civil Engineering, Landscape Architecture, Transportation, Environmental, Specialty Precast, Survey & Mapping, and Ecological Services. Our mission statement is stated simply: **“we are a seamless extension of our clients’ organizations.”** Our commitment is to the community, as well as to our clients.

### EXPERIENCE AND DEPTH

**Delta** project managers have an average of 30 years of design and management experience and are personally committed to satisfying our clients on every assignment. Our staff includes 29 licensed engineers, architects, and land surveyors, as well as a support staff of 89 other engineers, architects, technicians, industrial hygienists, cost estimators, and administrative staff that provide time and cost efficient services. This depth is key to our ability to handle concurrent projects with no adverse effect on performance.

### SOLID INFRASTRUCTURE

Internally, we have upgraded our IT data infrastructure and design platforms to include the Panzura Global Cloud Storage System. We continue to base our project management back office capabilities on the Newforma Project Management software suite. These tools have enhanced the security of our client data and our ability to collaborate without barriers.

### RESPONSIVENESS

Responsiveness is an integral part of the **Delta** culture. Our corporate structure, group organization, and project management approach allow us to form the right team of architects, engineers,

and support staff required for a project without delay. We take pride in providing effective solutions for our clients quickly and reliably.

### DESIGN CAPABILITIES

Our design technology capabilities have grown significantly in recent years. We have fully embraced Building Information Modeling (BIM) to capture efficiencies and improve design quality across the entire life cycle of facility design. Using the latest Revit®, AutoCAD, and laser scanning technology, we help our clients visualize design alternatives to determine which options best meet their needs.

### DESIGN EXCELLENCE

The quality of **Delta's** construction documents is second to none. Change orders on any **Delta** projects are well within any sort of industry standard, and we have the references and “score cards” to prove it. From programming to construction documents, each submission will contain and show the information developed and vetted clearly and concisely.

### LEED® CERTIFICATION EXPERTISE

**Delta** has significant experience with Leadership in Energy and Environmental Design (LEED®) consulting and green building design. We provide a comprehensive approach to the LEED® design process for both new and existing buildings. Our LEED® experience has ranged from roles as lead project Architect/Engineer to MEP Engineer to LEED® Project Management, and Commissioning Agent. We have seven LEED accredited professionals in our company.

### QUALITY MANAGEMENT SYSTEM

Our comprehensive Quality Management System (QMS) ensures that every project that we perform is rigorously peer reviewed in-house before delivery to ensure that all deliverables meet or exceed project requirements. Our formal, defined review processes that Delta uses on every project ensure consistent, high quality results across all disciplines.



# QUALIFICATION / EXPERIENCE

## **FUNCTIONAL GROUPS**

### **Facilities Group**

Building planning, design, and project management services for all phases of new and renovation facility projects from architectural concept through construction administration. Delta architects and engineers deliver an integrated package of architectural, structural, civil, mechanical, electrical, plumbing, fire protection, environmental, and construction administration services that are customized to our clients' requirements. Projects range from small single system renovations such as a fire protection system upgrade to complex renovations involving design coordination across all design disciplines such as a complete dormitory upgrade.

### **Architecture Group**

Comprehensive architectural programming, phasing, and full design services for new and renovation projects from concept through construction completion for institutional, commercial, industrial and residential clients. Delta has embraced Building Information Modeling (BIM) to capture efficiencies and improve design quality across the entire life-cycle of facility design. BIM is a technologically-driven process of design, coordination, and building management. Using the latest Revit®, AutoCAD, and laser scanning technology, we help our clients visualize design alternatives to determine which options best meet their needs.

### **Landscape Architecture Group**

Comprehensive architectural programming, phasing, and full design services for new and renovation projects from concept through construction completion for institutional, commercial, industrial and residential clients. Delta has embraced Building Information Modeling (BIM) to capture efficiencies and improve design quality across the entire life-cycle of facility design. BIM is a technologically-driven process of design, coordination, and building management. Using the latest Revit®, AutoCAD, and laser scanning technology, we help our clients visualize design alternatives to determine which options best meet their needs.

### **Transportation Group**

Design, analysis, project management, and construction administration services for transportation, safety and quality of life infrastructure projects including bridge, highway, traffic, parking, recreational trail and road usage. Delta transportation engineers deliver a complete portfolio of services for municipal, county, state, federal and private client projects and offer special expertise in the rehabilitation of historic, metal truss, and concrete arch bridges.

### **Civil Group**

Road and parking facilities, drainage, water supply, utility planning, overall planning, and permit support. We also develop Storm Water Pollution Prevention Plans (SWPPPs), erosion and sediment control plans, sanitary sewer plans,

retaining wall solutions, and pedestrian facility design which are based on and fully American with Disability Act (ADA) and Proposed Right-of-Way Access Guidelines (PROWAG) compliant.

### **Environmental Group**

Asbestos project design, inspection, and monitoring services, lead-based paint hazard assessment, remediation design and monitoring services, industrial hygiene investigations, hazardous material and water sampling, safety and compliance services, indoor air quality evaluations, and other environmental science and compliance services.

### **Specialty Precast Group**

Structural design and technical consulting engineering services to precast concrete manufacturers that enable them to streamline their project design and approval workflow. Typical precast projects include utility vaults and manholes, box culverts, concrete pipes, retaining and noise walls, arch and prestressed bridges, and complete modular buildings. Delta's precast engineers are directly licensed in 49 states and the District of Columbia and able to obtain licenses nationwide and internationally.

### **Survey & Mapping Group**

Custom survey and mapping services to governmental, institutional, commercial, and residential clients that range from simple boundary line determinations to complex three-dimensional assessments of structures and construction sites. Specialty areas include the integration of laser scanning into engineering design for transportation and facility projects and the highest quality mapping for topographic, ALTA, and construction site surveys.

### **Ecological Services Group**

Delta offers a complete suite of wetland services for institutional, commercial, and industrial clients. We also specialize in studies of natural resources, wildlife, vegetation, fisheries, habitat inventories, and endangered species. Our staff specialists have comprehensive knowledge of environmental regulations, excellent working relationships with key natural resource and regulatory agencies, and a reputation for strong professional teamwork and client responsiveness.

### **Specialty Sports Engineering Group**

Goal Posts, Batter's Eye, Foul Poles, Press Boxes, Dugouts, Filming Towers, Concession Stands, Batting Tunnels, Fencing, Soccer Goals, Tension Netting, Safety Systems, and Throwing Cages. Delta is well versed in handling the various design and code requirements of each state in which we are licensed to deliver service. We listen to your needs and deliver solutions that solve your design problems and move your projects forward on a schedule that works for you.

# PROJECT EXAMPLES



## OWNER

Broome County Department of  
Public Works

## CLIENT

Broome County Department of  
Public Works

## CONTACT & PHONE

Tim Leonard  
607-778-2909

## COMPLETION DATES

*Professional Services*  
2004

*Construction*  
2004

## CONSTRUCTION COST

\$1,200,000

## SERVICES

Architectural, structural,  
mechanical, plumbing, electrical,  
construction administration

## DELTA PROJECT MANAGER

Anthony R. Paniccia, PE, JD

## BROOME COUNTY VETERANS MEMORIAL ARENA SKYBOX DESIGN

This project involved full design services of architectural, structural, mechanical, plumbing, and electrical disciplines for eight skyboxes totaling 3,000 square foot addition/renovation within the physical confines of the existing arena. The project also included the stipulation for seven separate prime construction contracts. As a result, Delta provided full-time on-site construction administration services for the project during construction.

The skyboxes are contained in a separate suite, with separate entry and exiting. Each skybox consists of fixed seating for twelve and loose seating at the stand-up bar; individual temperature and lighting controls; indirect lighting for curved ceiling; and accessible lift.

Delta was responsible for the design, which included wall, floor, ceiling finishes, and selection of seating and related furnishings. The project required a variance by New York State Board of Review, successfully obtained by Delta during preliminary design.

Construction administration services included facilitating progress meetings, coordination scheduling, reviewing field directives, pay applications, certified payroll, project budget, and closeout.





# PROJECT EXAMPLES



## OWNER

Binghamton University

## CLIENT

New York State  
Office of General Services

## CONTACT & PHONE

Dana Dostie  
Business Unit Leader, BU3; Project  
Manager, Assoc. HVAC Engineer  
518-474-6111

## COMPLETION DATES

*Professional Services*  
2004

*Construction Services*  
2004

## SERVICES

Architecture, Mechanical,  
Electrical, Structural

## DELTA PROJECT MANAGER

Richard R. Sanguinito, PE, LEED AP

## BINGHAMTON UNIVERSITY EVENT CENTER CONCESSION STAND AND COMMISSARY DESIGN

This project provided the design and construction administration services for three concession stands and one commissary area in the Binghamton University Event Center, which was under construction at the time under separate project (SUCF) State University Construction Fund.

The scope of services for the project included architectural and engineering services for the layout of chillers, freezers, sinks, and other kitchen equipment. HVAC, plumbing, sprinkler, and electrical systems were also designed.

Delta was responsible for the design of three concession stands on the upper level, and the commissary on the lower level. The designs included new floor, wall, ceilings finishes, accessories, and coordination with the campus food service provider and food service equipment representatives for types and locations of the food service equipment, materials and finishes.

Delta provided all field work to document existing conditions, construction documents, coordination with kitchen equipment provider/installer, and construction administration.



# PROJECT EXAMPLES



**OWNER**  
City of Albany

**CLIENT**  
City of Albany

**CONTACT & PHONE**  
Charles William  
518-434-5675

**COMPLETION DATES**  
*Professional Services*  
Estimated 2022

*Construction*  
Estimated 2022

**CONSTRUCTION COST**  
\$500,000

**SERVICES**  
Mechanical, Electric, and  
Plumbing Engineering

**DELTA PROJECT MANAGER**  
David R. Newton

## **CITY OF ALBANY IMPROVEMENT PROJECTS TO MECHANICAL SYSTEMS**

Delta was selected by the City of Albany to provide data collection, plan development, and architectural and engineering services required to renovate mechanical systems at two of the Albany Fire Department neighborhood stations.

At the Pine Bush Station, there were three distinct areas of work: the boilers needed replacement, an unused garage area was converted into a training space requiring new ventilating, heating, and cooling system and the emergency generator was undersized and unreliable.

Delta provided the mechanical, electrical and plumbing engineering design services and oversaw the construction.

The boiler work was conducted in phases to insure continued heat throughout the project. The gas service was modified to accommodate the low pressure

boilers and higher pressure generator.

The old unit heater and window air conditioner in the training room were replaced with a dedicated rooftop unit that provides proper ventilation and is supplemented with a bi-polar ionization unit to improve the effectiveness of the filtration and reduction of airborne pathogens.

The old generator was undersized and had to be manually started, resulting in potential gaps of service at critical times. The new generator has been sized to handle the entire building including the air conditioning of the office areas, bunk rooms and living areas of the 24 hours per day staff.

In addition, the switch gear has been upgraded to meet Code, separating life safety systems from other loads.





# PROJECT EXAMPLES



## OWNER

State University of New York at  
Potsdam

## CLIENT

State University of New York at  
Potsdam

## CONTACT & PHONE

Tom Poznanski  
Program Manager  
518-689-2597

## COMPLETION DATES

*Professional Services*  
2008

*Construction*  
2009

## CONSTRUCTION COST

\$617,000

## SERVICES

Architectural, Structural,  
Environmental, Cost Estimating,  
Construction Administration

## DELTA PROJECT MANAGER

Jeffrey L. Stafford, PE

## SUNY POTSDAM MAXCY HALL ATHLETIC COMPLEX MASONRY WALL DESIGN

Originally constructed in 1969, Maxcy Hall is a brick-faced athletic complex housed on the SUNY Potsdam campus. This three-story building houses a field house, ice arena, basketball courts, swimming pool, handball courts, wrestling practice room, weight room, classrooms, staff offices, and ancillary spaces.

The scope of work for this project involved the development of construction documents to repair the brick masonry and to replace windows on the three-story 245,000 sq. ft. athletic complex. Masonry repairs included: new brick work; flashing; and additional control joints per recommendations made during the structural inspection and study. Existing windows were replaced with fixed, Low-E units. Environmental services were provided to properly abate the lead and asbestos portions of the project.

Under a separate project, Delta performed a comprehensive structural inspection and report to address the cracking and erosion evident around the exterior masonry envelope. After ruling out the possibility of erosion to the foundation caused by sub-surface soil conditions, Delta summarized the options available to the State University Construction Fund, and to the college, varying from short-term solutions to more extensive long-term repairs.

Several alternatives were investigated, documented, and recommendations were made for repairs to the athletic complex. Delta found that although the up-front costs of performing extensive repairs were substantial, dramatic savings in energy and maintenance costs could be realized over an extended period.



# PROJECT EXAMPLES



## OWNER

Visions Federal Credit Union

## CLIENT

PWCampbell

## CONTACT & PHONE

Dean M. Giordano  
Senior VP Design & Construction  
412-963-0100

## COMPLETION DATES

*Professional Services*  
2019

*Construction*  
2019

## CONSTRUCTION COST

\$28,000,000

## SERVICES

Survey, Site/Civil, Structural,  
Mechanical, Electrical, Plumbing,  
Fire Protection, Environmental &  
Construction Administration

## DELTA PROJECT MANAGER

Anthony R. Paniccia, PE, JD

## VISIONS FEDERAL CREDIT UNION COUNTRY CLUB ROAD ADDITIONS AND RENOVATIONS

A new 91,000 sq. ft. three story addition was designed to expand the existing 64,000 sq. ft. Visions Federal Credit Union (VFCU) corporate headquarters in Endwell, NY. Delta was retained by VFCU and the lead architect, PWCampbell, as the lead engineering designer for site, structural, mechanical, electrical, plumbing, fire protection, as well as survey and mapping, geotechnical coordination, environmental survey and monitoring, and construction administration.

The site plan developed for this project included boundary survey information, outline of the proposed construction and setback, location of existing and proposed utilities, proposed lighting plan, proposed signage, proposed parking layout, and proposed landscaping. A storm water detention system using storage chambers beneath the parking lot was designed.

Delta services included structural analysis for load capacity factors and design for new elevator shafts, atrium, front entrance, and parking facilities. The building addition to

is deeper than the existing slab-on-grade building. A system of piles and secant wall was designed to support the existing foundations to allow the new structure to be adjacent to the existing building and to support underground parking.

Mechanical design was provided for over-all heating and cooling, venting and duct systems, and hydronic pipes. A variable air volume (VAV) system was designed to provide variable heating, cooling, and ventilation needs. A smoke purge system for the atrium space allowed the inclusion of open balconies to the three-story atrium.

A new data center was designed for the facility and a phased transition from the existing data center was coordinated to maintain uptime. A new emergency generator will power emergency life safety loads, data center functions, the emergency smoke management system for the atrium, and other essential loads.

There is a parking garage underneath the anterior portion of the facility.

ACEC New York



2021 Silver  
Award for  
Building/  
Technology  
Systems





# PROJECT EXAMPLES



**OWNER**  
SUNY Plattsburgh

**CLIENT**  
SUNY Plattsburgh

**CONTACT & PHONE**  
William Circelli  
Director of Facilities  
518-564-5040

**COMPLETION DATES**  
*Professional Services*  
2015

*Construction*  
2015

**CONSTRUCTION COST**  
\$725,900

**SERVICES**  
Architectural, Construction  
Administration

**DELTA PROJECT MANAGER**  
Jeffrey L. Stafford, PE

## SUNY PLATTSBURGH MEMORIAL HALL ROOF REPLACEMENT

The 34,000 sq. ft. Memorial Hall Gymnasium roof replacement at SUNY Plattsburgh involved the removal of the existing, protected EPDM upper roof system, the ballasted lower EPDM roof system, and the removal of the fully adhered EPDM roof system. The roof "system" included the concrete topped insulation panels (protected EPDM), stone roof ballast, the roof membrane, cover boards, rigid insulation, vapor barrier, and all related roof terminations and flashings. There was also an additional 3,400 sq. ft. of planned metal deck replacement included to cover possible deterioration. Each of these roofs was replaced with a .90 mil fully adhered EPDM roof system including insulation, cover boards, vapor barrier, and flashings

installed in order to attain a 30-year manufacturer's warranty.

There were multiple flashing conditions on the project that required careful analysis and coordination with the design manufacturer to provide appropriate roof system termination details. These included skylights, air handler units, and many masonry openings in the face brick that are currently being used for building HVAC airflow. The single existing roof access ladder was also modified with guardrails at the top to allow safer passage. To fully evaluate the roof condition and composition, Delta performed field investigations that included hazardous materials sampling services from Sienna Environmental Technologies.





# PROJECT EXAMPLES



## OWNER

Franklin Correctional Facility

## CLIENT

New York State  
Department of Corrections and  
Community Supervision

## CONTACT & PHONE

Peter A. DeMarzio  
Assistant Building  
Electrical Engineer  
518-474-0269

## COMPLETION DATES

*Professional Services*  
2018  
*Construction Services*  
2018

## CONSTRUCTION COST

\$2,500,000

## SERVICES

Architectural, Site/Civil,  
Structural, Mechanical, Electrical,  
Construction Administration

## DELTA PROJECT MANAGER

Michael Heikkila, PE, LEED AP



## FRANKLIN CORRECTIONAL FACILITY BUILDING 20 & 43 GENERATOR AND SWITCHGEAR REPLACEMENT

Delta was selected by the New York State Office of General Services to provide design and construction administration services to Franklin Correctional Facility, a medium security prison located in Malone, NY.

The scope of services for this project involved replacing the existing 750 kW generator in Building 20 and the 1,500 kW generator located in Building 43 with a single 2,000 kW diesel generator. It also involved removing and replacing the 13.2 kV distribution switchgear in Building 20 and generator breakers and paralleling switchgear in Building 43 with split bus closed transition switchgear. An additional

utility feeder was also installed to provide a main-tie-main setup on the proposed switchgear and a temporary generator hookup was added that connects with the main switchgear to allow power to be provided during an outage.

Delta coordinated efforts for the engineering field work, prepared demolition drawings for the removal of the existing generators, switchgear, and related fuel systems, and provided project oversight with regard to scope, schedule and budget. Additionally, they provided architectural, site/civil, structural, mechanical, electrical, and construction cost estimation.



# PROJECT EXAMPLES



## OWNER

Corning Museum of Glass

## CLIENT

Corning Museum of Glass

## CONTACT & PHONE

David Murray  
Operations Manager  
607-974-8146

## COMPLETION DATES

*Professional Services*  
2009

*Construction*  
2009

## CONSTRUCTION COST

\$308,000

## SERVICES

## DELTA PROJECT MANAGER

Frederick C. Allabaugh Jr.  
PE, LEED AP

## CORNING MUSEUM OF GLASS

### UPPER LEVEL GALLERY AIR HANDLING UNIT REPLACEMENT

The Corning Museum of Glass Upper Level Gallery was originally constructed in 1978. The air handling unit (AC-1) was installed with the original construction of the museum and, due to an increase in the gallery lighting load, has added to the cooling load of the unit. Delta Engineers provided mechanical, electrical, and commissioning services for this project.

Replacement of the AC-1 chiller required a preconstruction survey of the existing unit and distribution system. The scope of services included modifications to the mechanical room and air distribution systems, new automatic temperature controls, modifications to the electrical service, new cooling coil, new valves, new filter bank, and heating coil. Since the building is occupied, this project required the installation of a temporary supply fan unit during the replacement phasing, and set a pre-purchased chiller for the Owner.

The commissioning services for this project included Pre-Design Phase Services, Design Phase Services, Construction Phase Services, and Post Construction Phase Services. The Pre-Design Phase Services included assisting in developing the Owner's project requirements and developing the commissioning plan.

During the Design Phase Services, Delta Engineers reviewed the Engineer's basis of design, finalized the commissioning plan, performed the design review and prepared the commissioning specifications. Construction Phase Services included conducting a pre-construction commissioning conference, the review of the submittals, overseeing the commissioning test procedures, training with the Owner and facility staff, as well as finalizing the commissioning report. Finally, the Post-Construction Phase Services included coordinating the post-occupancy and off-season testing.





# PROJECT EXAMPLES



## OWNER

United States Postal Service

## CLIENT

United States Postal Service

## CONTACT & PHONE

John Flynn  
Project Manager  
603-655-7911

## COMPLETION DATES

*Professional Services*  
Estimated April 2022

## *Construction*

Estimated June 2023

## CONSTRUCTION COST

\$1,800,000

## SERVICES

Structural, Mechanical, Electrical,  
Cost Estimating, Construction  
Administration

## DELTA PROJECT MANAGER

Frederick C. Allabaugh,  
PE, LEED AP



## UNITED STATES POSTAL SERVICE ALBANY STATION HVAC AND VAV REPLACEMENT

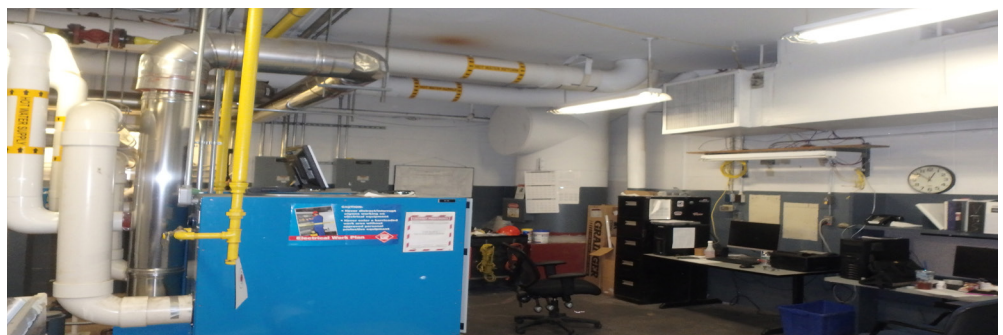
The office area at the USPS Main Distribution Facility located in Albany, NY is currently served by three (3) indoor air handlers located on an interior mezzanine. Each air handler is a hot deck/cold deck configuration with dual-duct variable air volume (DDVAV) boxes located above the ceiling of the office area. Each DDVAV box is controlled by wall mounted thermostats in the spaces they control.

The renovation of this system involves the complete removal of the indoor air handlers, DDVAV boxes, and all associated ductwork and controls. The ceilings in the office areas will be removed to accommodate the removal

of the systems.

The office area will be served by new natural gas heating, direct-expansion (DX) cooling outdoor rooftop units installed above the office area. Supply air and return air distribution ductwork, single-duct variable air volume boxes (SDVAV), and wall mounted thermostats will all be provided. A new lay-in ceiling will be installed once the mechanical work is completed.

The Building Management System (BMS) will need to be revised to reflect the changes in the heating/cooling systems serving the office area.





# PROJECT EXAMPLES



## OWNER

Syracuse University

## CLIENT

Syracuse University

## CONTACT & PHONE

Eric L. Beattie  
Director  
315-443-5439

## COMPLETION DATES

Professional Services  
2016

## SERVICES

Survey & Mapping

## DELTA PROJECT MANAGER

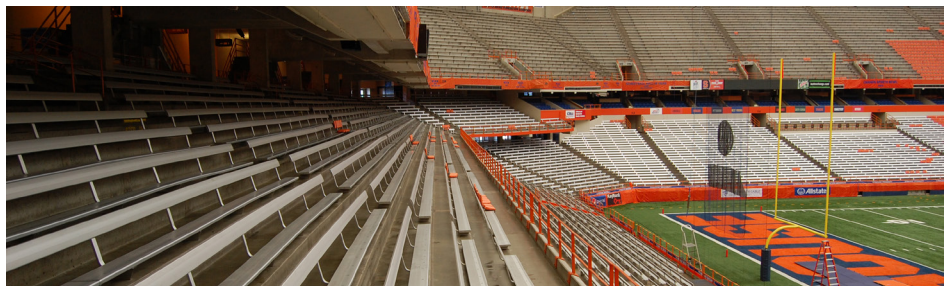
Anthony R. Paniccia, PE, JD

## SYRACUSE UNIVERSITY CARRIER DOME TOPOGRAPHIC AND BOUNDARY SURVEY

Syracuse University has continued to make improvements and renovations to the Carrier Dome. In previous projects, Delta established a control network on the roof and ground levels, as well as performed laser scanning and 3D modeling services.

This project consisted of installing 8-10 plastic permanent control monuments along the concrete parapet and merging them with the existing control network. It also required that all necessary office calculations and reviews be performed. Delta provided stakeout services of centerline/intersections/offsets to the

truss gridlines, perimeter line, and building centerlines, as well as a stakeout of GPR limits for the roof level "tub" areas. GPR scanning services were performed to determine the depth and spacing of the existing reinforcing bars and services from the New York Leak Detection (NYLD) were also coordinated and utilized. The report constructed by the NYLD for the three areas scanned on the exterior of the Dome and the one area inside was reviewed and forwarded by Delta. The markings placed by the NYLD of the roof were located and incorporated into the design cad file that was prepared.



# PROJECT EXAMPLES



## OWNER

Broome County  
Department of Public Works

## CLIENT

Broome County  
Department of Public Works

## CONTACT & PHONE

Leslie G. Boulton, PE  
Commissioner of Public Works  
607-778-2490

## COMPLETION DATES

*Professional Services*  
Ongoing

*Construction*  
Per Task Assignment

## CONSTRUCTION COST

\$45,000,000 Estimated

## SERVICES

Structural

## DELTA PROJECT MANAGER

John M. Spritzer III, PE, LEED AP

## BROOME COUNTY DEPARTMENT OF PUBLIC WORKS STRUCTURAL TERM AGREEMENTS

Delta has held consecutive structural term agreements with the Broome County Department of Public Works (BCDPW) since 1994. These successive term agreements have required the delivery of a broad range of "on-call" structural engineering services under open end agreements from 1994 through the present.

Typical infrastructure-related services provided have included recommendations regarding red and yellow structural flags from NYSDOT, Level 1 load ratings, in-depth inspections, load posting recommendations, and bridge repair plans and details to allow removal of structural flags.

Bridge superstructure types have included composite multiple steel beams, steel through trusses, steel through girders, precast prestressed concrete beams, continuous concrete slabs, and steel beams with concrete jack arch decks.

In addition to transportation infrastructure projects, Delta has been called on to diagnose and address roof structural issues, retaining wall design, and analysis and redesign of concrete stairs. Over this 24 year period, Delta has completed approximately 140 projects for the BCDPW.





# PROJECT EXAMPLES



## OWNER

Various NYS Agencies  
and SUNY

## CLIENT

Dormitory Authority of the  
State of New York

## CONTACT & PHONE

Paul G. Koopman  
Director of Construction Admin.  
518-257-3343

## COMPLETION DATES

*Professional Services*  
Ongoing since 1998

## *Construction*

\$20K to \$8M range under term

## SERVICES

Architectural, Civil, Structural,  
Mechanical, Electrical, Plumbing,  
Fire Protection, Environmental,  
Construction Administration

## DELTA PROJECT MANAGERS

Richard R. Sanguinito, PE, LEED AP  
Rick C. Allabaugh, PE, LEED AP

## DORMITORY AUTHORITY OF THE STATE OF NEW YORK (DASNY) ARCHITECTURE & ENGINEERING TERM AGREEMENTS

Delta has provided engineering and architectural design services for the Dormitory Authority of the State of New York (DASNY) under a series of consecutive term agreements which started in 1998 and continue through 2021.

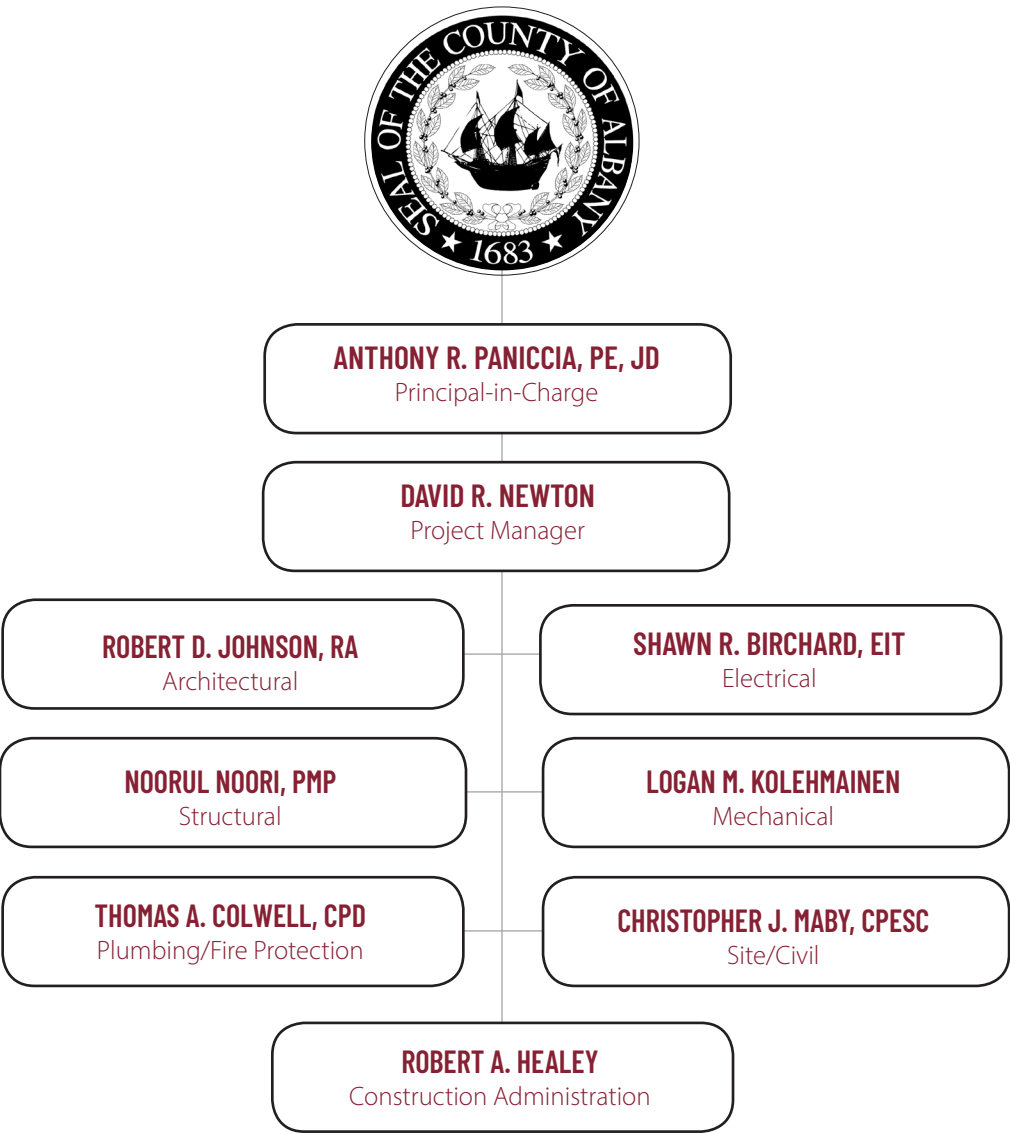
Services have been provided to a variety of facilities throughout the State of New York, including colleges and universities, psychiatric centers, and medical facilities. Delta has provided architectural, civil, structural, mechanical, electrical, plumbing, fire protection, environmental, and construction administration services under these term agreements.

Larger task assignments typically have involved close multi-disciplinary coordination between multiple teaming partners to meet schedule and budget expectations. All projects require close adherence to DASNY Design Guidelines and all applicable Executive Orders, NYSEDA guidelines, and other state and local codes.

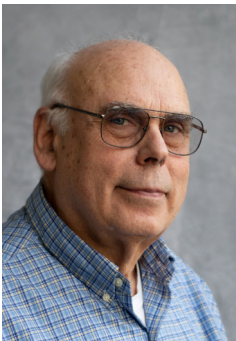
Recent projects have included several complete dormitory rehabilitations, a highly complex rehabilitation of a high security psychiatric ward, a study for the development of a new municipal facility, the repurposing of an existing facility into a drug rehab center as well as many other smaller focus projects.



# ORGANIZATIONAL CHART



## PROJECT MANAGEMENT



### David R. Newton

Mr. Newton has joined the Delta Schenectady, NY office as a Project Manager in the Facilities Engineering Group. David is a graduate of Union College with a B.S. in Mechanical Engineering. His project portfolio includes work for diverse market sectors including higher education, K-12 academic institutions, and public facilities such as office spaces and healthcare units.

(518) 690-0049 | [dnewton@delta-eas.com](mailto:dnewton@delta-eas.com)

***Delta** has a strong working relationship with many area MBE, WBE, DBE, and SDVOB firms. We will choose who to invite to our team based on the tasks assigned to meet any required goals.*



## ANTHONY R. PANICCIA, PE, JD

*Principal-in-Charge*

Mr. Paniccia has been President and CEO of Delta since 2006, overseeing all aspects of the company. An electrical engineer and project manager by training, Anthony understands what it takes to complete complex projects on time and on budget.

He leads the Business Development Group and is responsible for strategic planning, marketing, client development and relations. A lifelong resident of New York's Southern Tier, Anthony is actively engaged in community service opportunities ranging from Mercy House of the Southern Tier to the SUNY Broome Board of Trustees.

### LICENSES/CERTIFICATIONS

Professional Engineer: AL, AZ, AR, CO, CT, DC, DE, FL, GA, HI, ID, IL, IN, KS, KY, LA, ME, MD, MA, MI, MN, MO, MS, MT, NV, NH, NJ, NY, NC, OH, OK, OR, PA, RI, SC, TN, TX, UT, VT, VA, WA, WV, WI

NYS License: 076303

Certified Asbestos Project Designer: NY

### EDUCATION

Lincoln Law School, JD, Juris Doctor, 2001

Clarkson University, BSEE, Electrical Engineering, 1989

Broome Community College, AS, Engineering Science, 1987

### YEARS OF EXPERIENCE

33 years total, 27 years with Delta



### RELEVANT PROJECT EXPERIENCE

#### BROOME COUNTY VETERANS MEMORIAL ARENA

##### *Electrical Engineer*

This project involved provision of full design services involving architectural, engineering, and construction administration services for the 3,000 sf addition/renovation in the physical confines of the existing arena. The project required variances by New York State Board of Review, successfully obtained by Delta during preliminary design. *Project Owner: Broome County Department of Public Works*

#### ARENA STAIR REPLACEMENT

##### *Principal-in-Charge*

As part of an existing structural engineering services term agreement with the Broome County Department of Public Works, Delta was engaged to assess the integrity of two deteriorating concrete stairways that provided primary access to the Broome County Veterans Memorial Arena in Binghamton, NY and to provide a cost effective engineering design solution to lengthen their service life. On this project, Delta provided architectural, structural, electrical, cost estimating, and construction administration services. Delta also directed the work of a subconsultant geotechnical engineering firm for the foundation design, test borings, and soil samples that were required. *Project Owner: Broome County Department of Public Works*

#### BINGHAMTON UNIVERSITY EVENT CENTER - CONCESSION, COMMISSARY

##### *Principal-in-Charge*

This project provided the design and construction support for three (3) concession stands and one (1) commissary area. The scope of services included architectural and engineering services for the layout of chillers, freezers, sinks and kitchen equipment, HVAC, plumbing and sprinkler systems. *Project Owner: Binghamton University*

#### VISIONS FEDERAL CREDIT UNION ADDITIONS AND RENOVATIONS

##### *Project Manager*

As primary design subconsultant, Delta provided site design, structural, mechanical, electrical, plumbing, fire protection, survey and mapping, geotechnical coordination, environmental survey and monitoring, and construction administration. A storm water detention system using storage chambers beneath the parking lot was designed. An atrium smoke purge system was designed to allow the inclusion of open balconies. A new data center was also designed and a phased transition from the existing center was coordinated to maintain uptime. *Project Owner: Visions Federal Credit Union*





## DAVID R. NEWTON

Project Manager

Mr. David R. Newton has joined the Delta Schenectady, NY office as a Project Manager in the Facilities Engineering Group. David is a graduate of Union College with a B.S. in Mechanical Engineering. His project portfolio includes work for diverse market sectors including higher education, K-12 academic institutions, and public facilities such as office spaces and healthcare units.

### EDUCATION

Union College, BS, Mechanical Engineering, 1986

### EXPERIENCE

31 years of experience, 2 years with Delta

### RELEVANT PROJECT EXPERIENCE

#### **CITY OF ALBANY IMPROVEMENT PROJECTS TO MECHANICAL SYSTEMS** *Senior Project Engineer*

Delta was selected by the City of Albany to provide data collection, plan development, and architectural and engineering services required to renovate mechanical systems at the Albany Fire Department Headquarters and one of the other area fire stations. The condenser unit and fan coil unit of the Headquarters bunkroom were in need of replacement in the existing air handling units. At the Pinebush Station, the existing boilers needed replacement, the HVAC system was to be expanded to include other area, and recommendations were needed on the replacement of hot water pumps. *Project Owner: City of Albany*

#### **USPS ALBANY NY HVAC VAV REPLACEMENT** *Senior Project Engineer*

The office area at the USPS Main Distribution Facility located in Albany, NY is currently served by three (3) indoor air handlers located on an interior mezzanine. Each air handler is a hot deck/cold deck configuration with dual-duct variable air volume (DDVAV) boxes located above the ceiling of the office area. The renovation of this system involves the complete removal of the indoor air handlers, DDVAV boxes, and all associated ductwork and controls. The ceilings in the office areas will be removed to accommodate the removal of the systems. *Project Owner: United States Postal Service*

#### **RITZ BUILD TURNER FAIRBANKS LAB RENOVATION** *Senior Project Engineer*

The Turner-Fairbank Highway Research Center (TFHRC), is a federally owned and operated national research facility in McLean, Virginia that houses more than 20 laboratories, data centers, and support facilities, and conducts applied and exploratory advanced research in vehicle-highway interaction, nanotechnology, and a host of other types of transportation research. A large percent of the laboratory space at TFHRC were over 25 years old. The aging stock presented specific challenges to the continued successful operation of the laboratories to meet mission requirements. Delta and the contractor, Ritz Construction, was selected for the upgrades of laboratory spaces to meet current requirements, and for the modernization of facilities to maintain the reliability of building support systems and improve environmental conditions. *Project Owner: Ritz Construction, Inc.*



## ROBERT D. JOHNSON, RA, LEED AP

*Project Architect*

Mr. Robert D. Johnson, RA, LEED AP, joins Delta as a Project Architect in the Vernon Office. He brings over 45 years of experience in architectural design, project management, architectural representation and sustainability administration to the position and has a great deal of experience with Revit and BIM360. He is a registered architect with the New York State Education Department. His duties will include assisting the project manager in developing design parameters, scopes of services and estimates during the proposal stage, quality control of work products, preparation of technical specifications, processing shop drawings and attending meetings and presentations with the client.

### LICENSES/CERTIFICATIONS

Registered Architect: NY

### EDUCATION

SUNY Buffalo, MA, Architecture, 1983

SUNY Buffalo, BPS, Professional Studies, 1981

Onondaga Community College, AS,  
Technology, 1979

### EXPERIENCE

45 years total, 1 year with Delta

### RELEVANT PROJECT EXPERIENCE

#### DASNY CNYPC BUILDING 39 REHABILITATION

##### *Project Architect*

Delta is the prime consultant for the \$90M renovation of Building 39 at the Central New York Psychiatric Center in Marcy, NY. This project has three primary components to be accomplished within a closely coordinated and phased schedule. New fixed, non-operable windows, HVAC system upgrades and decentralization, new service buildings, and new switchgear are part of the project. Delta will provide architectural design, mechanical, electrical, plumbing, site/civil, survey, and CA services for this project to be completed in 2023. *Project Owner: Dormitory Authority of the State of New York*

**Mr. Johnson performed work for these projects while employed by a previous firm:**

#### TYLER HALL,

##### *Project Architect*

Acted as the site administration architect for renovations at a SUNY college school for the performing arts. The project involved a total renovation of the recital hall, recording studio, practice rooms, classrooms, and theater with the related back of house including fly, pit, trap, control room and spot positions. The work included theatrical sound, lighting and performance acoustics. Due to a school occupancy, all spaces required full accessibility for the disabled. *Project Owner: SUNY Oswego*

#### NEXUS SPORTS FACILITY MULTI-PURPOSE TRAINING SPACE

##### *Project Architect*

NEXUS is an approximately 180,000-square foot tournament-based recreation play facility, adjacent to the Adirondack Bank Center at the Utica Memorial Auditorium. The NEXUS facility includes three playing surfaces, locker rooms, commercial office space, college classroom space, retail space, concession services, and other multi-purpose training space. The project role was to be the Design Build Owners Representative (DBOR) for the program and assisted the Authority with the development of a three-phase development process that will include a Qualification phase, a proposal phase, and an implementation phase. Responsibilities included architectural program, design development, schematic design drawings, shop drawing review, and construction review activities.

*Project Owner: Upper Mohawk Valley Community Development*



## SHAWN R. BIRCHARD, EIT

Senior Electrical Engineer

Mr. Birchard is a Senior Project Engineer in the Delta Facilities Group. He designs lighting, power, fire alarm, and security systems. Shawn has designed hundreds of systems for a wide range of facilities, including educational, governmental, institutional, commercial, industrial, utility, retail, and medical buildings as well as parking and streetscape projects. Shawn has designed and has managed design teams for both new and renovation work. His renovation experience ranges from minor power adjustments to full space, gut removal and reconfiguration.

### LICENSES/CERTIFICATIONS

Engineer In Training: NY  
NYS Number: 085646

### EDUCATION

Alfred University, BS, Electrical Engineering,  
2000

### YEARS OF EXPERIENCE

23 years total, 21 years with Delta

### RELEVANT PROJECT EXPERIENCE

#### BROOME COUNTY VETERANS MEMORIAL ARENA *Electrical Engineer*

This project involved provision of full design services involving architectural, engineering, and construction administration services for the 3,000 sf addition/renovation in the physical confines of the existing arena. The project required variances by New York State Board of Review, successfully obtained by Delta during preliminary design. *Project Owner: Broome County Department of Public Works*

#### VISIONS FEDERAL CREDIT UNION ADDITIONS AND RENOVATIONS *Senior Electrical Engineer*

As primary design subconsultant, Delta provided site design, structural, mechanical, electrical, plumbing, fire protection, survey and mapping, geotechnical coordination, environmental survey and monitoring, and construction administration. A storm water detention system using storage chambers beneath the parking lot was designed. An atrium smoke purge system was designed to allow the inclusion of open balconies. A new data center was also designed and a phased transition from the existing center was coordinated to maintain uptime. *Project Owner: Visions Federal Credit Union*

#### DASNY CNYPC BUILDING 39 REHABILITATION *Senior Electrical Engineer*

Delta is the prime consultant for the \$90M renovation of Building 39 at the Central New York Psychiatric Center in Marcy, NY. This project has three primary components to be accomplished within a closely coordinated and phased schedule. New fixed, non-operable windows, HVAC system upgrades and decentralization, new service buildings, and new switchgear are part of the project. Delta will provide architectural design, mechanical, electrical, plumbing, site/civil, survey, and CA services for this project to be completed in 2023. *Project Owner: Dormitory Authority of the State of New York*

#### BLUE RIDGE SCHOOL CAFETERIA RENOVATION *Senior Electrical Engineer*

Delta is designing the new cafeteria for The Blue Ridge School, a private boarding school located in the Shenandoah mountains of Greene County, VA. The project will repurpose a portion of the campus library to serve as a new expanded dining facility. The program includes renovating a timber structured reading room as the main dining hall, with new kitchen, serving, storage, dishwash and support facilities. *Project Owner: Blue Ridge School*



## NOORUL NOORI, PMP

Senior Structural Engineer

Mr. Noori is Senior Structural Engineer in the Delta Facilities Group. Noorul has 22 years of experience in the design and construction industry. His experience includes construction management, concept, preliminary, final design, and design review. Noorul has expertise in the structural design of concrete, wood, steel and masonry structures and has designed numerous buildings, water reservoirs, custom septic tanks, lift stations, concrete and stone masonry perimeter walls, retaining walls and other structures. He is a certified Project Management Professional (PMP) that has prepared hundreds of cost proposals and has managed several construction projects from conception to delivery.

### LICENSES/CERTIFICATIONS

PMI Certified: Project Management Professional (PMP)

### EDUCATION

University of Hartford, MEng, Structural Engineering, 2019

Kabul University, BS, Civil Engineering, 1999

### EXPERIENCE

22 years total, 1 year with Delta

### RELEVANT PROJECT EXPERIENCE

*Mr. Noori performed work for these projects while employed by a previous firm*

#### SHINDAND AIRFIELD AIR FORCE EXPANSION

##### **Structural Engineer/Design Manager**

This project included site adapt design of a dining facility for 1500 soldiers at one time, a new health facility, a new fire house, new 150,000 gallon on ground concrete reservoir, a wastewater treatment plant for 3000 people, several power generators pads, fuel tanks pads water and sewer networks structures and several other small structures. **Project Owner: Afghan Air Force/US Air Force**

#### BORDER POLICE BATTALIONS

##### **Structural Engineer/Design Manager**

These design-build projects included site adapt design for 18 different locations. The design portion included: site adapt design for concrete buildings, metal canopies, foundation design of prefabricated metal buildings, foundation design of 20,000-gallon elevated water tank, sewer and water network design, design of power generator canopy, generator pads, underground power distribution system, design of perimeter wall, guard towers, entry control points, and many more structures. **Project Owner: Afghan National Police/US Army Corps of Engineers**

#### GAMBERI GARRISON EXPANSION PHASE V

##### **Design Project Manager and Design Reviewer**

This project consisted of the design and construction for the expansion and upgrade of Gamberi Garrison in Laghman Province, Afghanistan. The project included site-adapt design and construction and construction of several K-span buildings, concrete buildings, ammunition supply buildings, stone masonry with concrete core perimeter wall, new fuel tanks, fuel tank canopies, lift stations, wastewater treatment plant, storm drainage network and structures, water and sewer network and structures, concrete sidewalks, paved connecting roads, motor pools, and the foundation design for a 50,000 gallon prefabricated steel water tank. **Project Owner: Afghan National Police/US Army Corps of Engineers**

#### CIVIL ORDER POLICE BATTALIONS

##### **Chief of Construction**

These design build projects included site adapt design and construction of facilities in two different locations. The scope of the project was to site adapt the facilities to reside 500 civil order police. This police camp included site adapt design and construction of several concretes framed with masonry infilled buildings, metal canopies, prefabricated metal buildings, earth covered ammunition supply buildings, 20,000-gallon elevated water tanks, sewer and water network, power generators canopy, generator pads, underground power distribution system, leach field and septic tank, perimeter wall, guard towers, and entry control points. **Project Owner: Afghan National Police/US Army Corps of Engineers**



## LOGAN M. KOLEHMAINEN

Assistant Engineer

Logan Kolehmainen is an Assistant Engineer in the Delta Facilities Group. Logan utilizes Revit software and AutoCAD to assist Senior Project Engineers on Delta projects, including municipal buildings, K12 and higher education academic buildings, and laboratory buildings. She is tasked with drafting and HVAC system design assistance.

### EDUCATION

Fairleigh Dickinson University, BTME,  
Mechanical Engineering Technology, 2021

### YEARS OF EXPERIENCE

1 year total, 1 year with Delta

### RELEVANT PROJECT EXPERIENCE

#### TOWN OF MAINE EMS BUILDING RENOVATION

##### *Assistant Engineer*

The Town of Maine EMS building had a leaking roof system and smoke damage from a fire. Delta was selected to perform a building condition assessment and design the renovation of the interior and some exterior portions of the building. Due to the two events, the building the renovation design is required that many items be brought up to current code. The project involved an overall building code review to understand the extent of the building renovation and all items required to be upgraded were depicted on construction drawings. Delta provided architectural, plumbing, HVAC, electrical, construction administration, and project management services for this project. *Project Owner: Town of Maine EMS*

#### YORKTOWN CENTRAL SCHOOL DISTRICT CAPITAL IMPROVEMENT PROJECTS

##### *Assistant Engineer*

Delta provided MEP design services for a series of improvement projects to the Yorktown Central School District, which is located 30 miles north of New York City. Improvements included installation of second floor air conditioning in the High School, the replacement of corridor lighting at Crompond, direct burial line replacement at the Middle and High School Campus, and cooling tower replacement at the middle school. In addition, upgrades were completed for the band practice rooms and gymnasium in the high school, the middle school bathrooms will be renovated for ADA accessibility, a new kitchen servery will be added to Brookside Elementary, and the nurse's office will be renovated at Mohansic Elementary. *Project Owner: Yorktown Central School District*

#### TURNER-FAIRBANKS LABORATORY RENOVATION

##### *Assistant Engineer*

The Turner-Fairbank Highway Research Center (TFHRC), is a federally owned and operated national research facility in McLean, Virginia that houses more than 20 laboratories, data centers, and support facilities, and conducts applied and exploratory advanced research in vehicle-highway interaction, nanotechnology, and a host of other types of transportation research. A large percent of the laboratory space at TFHRC were over 25 years old. The aging stock presented specific challenges to the continued successful operation of the laboratories to meet mission requirements. Delta and the contractor, Ritz Construction, was selected for the upgrades of laboratory spaces to meet current requirements, and for the modernization of facilities to maintain the reliability of building support systems and improve environmental conditions. *Project Owner: Federal Highway Administration*





## THOMAS A. COLWELL, CPD

Senior Plumbing/FP Engineer

Mr. Colwell is Senior Project Engineer in the Delta Facilities Group. Tom has 40 years of plumbing and fire protection engineering design experience. He has provided plumbing and fire protection designs for a wide range of projects at hundreds of locations, from sophisticated high-technology facilities to campground water systems. Tom has designed systems for educational, agricultural, medical, commercial, industrial, governmental, institutional, retail, and utility clients and has extensive experience working on multi-disciplinary design teams.

### LICENSES/CERTIFICATIONS

Certified Plumbing Designer: NY

### EDUCATION

SUNY Delhi, AAS, Engineering Technology, 1979

### EXPERIENCE

43 years of experience, 16 years with Delta

### RELEVANT PROJECT EXPERIENCE

#### VISIONS FEDERAL CREDIT UNION ADDITIONS AND RENOVATIONS

##### **Senior Plumbing/FP Engineer**

As primary design subconsultant, Delta provided site design, structural, mechanical, electrical, plumbing, fire protection, survey and mapping, geotechnical coordination, environmental survey and monitoring, and construction administration. A storm water detention system using storage chambers beneath the parking lot was designed. An atrium smoke purge system was designed to allow the inclusion of open balconies. A new data center was also designed and a phased transition from the existing center was coordinated to maintain uptime. *Project Owner: Visions Federal Credit Union*

#### DASNY CNYPC BUILDING 39 REHABILITATION

##### **Senior Plumbing/FP Engineer**

Delta is the prime consultant for the \$90M renovation of Building 39 at the Central New York Psychiatric Center in Marcy, NY. This project has three primary components to be accomplished within a closely coordinated and phased schedule. New fixed, non-operable windows, HVAC system upgrades and decentralization, new service buildings, and new switchgear are part of the project. Delta will provide architectural design, mechanical, electrical, plumbing, site/civil, survey, and CA services for this project to be completed in 2023. *Project Owner: Dormitory Authority of the State of New York*

#### NYSDOT MAYVILLE ADDITION

##### **Senior Plumbing/FP Engineer**

Delta designed a stand-alone, pre-engineered metal building for the NYSDOT Maintenance Headquarters. The structure will be approximately 12,000 sq. ft. and will be used primarily for vehicle storage. It will also include ancillary spaces for equipment storage, a stock room, toilet room facilities and a dedicated mechanical room. Delta will provide site/civil, architectural, structural, mechanical, electrical and plumbing services. *Project Owner: New York State Office of General Services*

#### NYS ACADEMY OF FIRE SCIENCE FIELD OPERATIONS BUILDING

##### **Senior Plumbing/FP Engineer**

NYSOGS selected Delta to provide a program report, design services, construction documents, and construction administration for a new 20,000 sq. ft. Field Operations Building for the Department of Homeland Security and Emergency Services (DHSES), located on the training grounds of the Academy of Fire Science in Montour Falls, NY. The project provided heated storage for approximately \$2M worth of fire apparatus, a fully functional classroom, and storage areas for firefighter turnout gear and training equipment. *New York State Department of Homeland Security and Emergency Services*



## CHRISTOPHER J. MABY, CPESC

Senior Civil Engineer

Mr. Maby is the Director of Civil Engineering Services in Endwell for Delta. Chris is a seasoned civil engineer with over 33 years of wide-ranging experience in the areas of due diligence for developments, site planning and design, including grading and earthwork, roadway and pavement design, and ADA / PROWAG compliant pedestrian facilities. He is also involved with traffic impact studies, and stormwater management and SWPPP development including erosion and sediment control designs. Chris also has extensive successful experience in FEMA Disaster projects, streambank restoration and rehabilitation.

Chris's versatility extends to SWPPP inspections, construction inspections, and site plan application reviews making him a highly valuable leader in our Civil Group. He has also led the development of innovative stormwater retention, detention, and infiltration solutions that are grounded in NYSDOT-compliant green infrastructure practices. Chris is an officer on the CNY ASHE board, a member of the Cornell LTAP Advisory Board, and promotes the interest in and future growth of civil engineering by working with students in the P-TECH program coordinated by BOCES.

### LICENSES/CERTIFICATIONS

Certified Prof. in Erosion & Sediment Control

### EDUCATION

SUNY Broome, AAS, Civil Engineering Technology, 1987

### EXPERIENCE

35 years of experience, 18 years with Delta



### RELEVANT PROJECT EXPERIENCE

#### VILLAGE OF DEPOSIT NEW PUBLIC PARK DESIGN

##### *Project Manager*

Delta was selected to develop a Master Plan for the Village of Deposit. The Master Plan completes the preliminary effort to transform a vacant waterfront property into a riverfront park. The 3.3 acre future park is adjacent to the West Branch Delaware River near the downtown business district and was acquired by the Village from Delaware County. The Master Plan details the project collaboration, research and planning, permitting discussions, potential park amenities and phasing, and concludes with an estimate of probable costs. *Project Owner: Village of Deposit*

#### CHENANGO STREET PEDESTRIAN ACCESSIBILITY ENHANCEMENT

##### *Project Manager*

This "pass thru" project will replace deteriorated sections of existing sidewalk, construct new sidewalk in sections that are missing, install ADA compliant curb ramps and crossings at the appropriate locations at intersections, as well as signing prohibiting on-street parking as part of an effort to reduce crashes involving parked cars while improving bicycle mobility through the corridor. Work tasks include design survey and mapping, public participation, coordination with state and federal agencies that have oversight, design report development, preliminary and final design, right-of-way acquisition, and construction administration and inspection services. *Project Owner: Broome County*

#### CITY OF ITHACA SIDEWALK CURB RAMP DESIGN AND CONSTRUCTION

##### *Project Manager*

This project improves pedestrian safety and mobility improvements, and consists of constructing new or replacement sidewalks at 30 locations scattered throughout the City of Ithaca. The project focus is to development ADA and PROWAG compliant pedestrian facilities. Services included in this project consisted of topographic and boundary survey and mapping, preliminary and final design engineering services, alternative development, speed studies, miscellaneous coordination with other City Departments, NYSDOT, and the evaluation of existing retaining walls and recommendations for replacements where appropriate. *Project Owner: City of Ithaca*

#### CORNING ADA TRANSITION PLAN

##### *Project Manager*

The City of Corning developed and implemented a short and long term plan to make its facilities more accessible to pedestrians and bring them into compliance with current American with Disabilities Act (ADA) regulations and Proposed Right of Way Access Guidelines. They selected Delta to complete the first step of the transition plan. Delta's efforts involved evaluating all the facilities owned by the City that are publicly accessible. These facilities included sidewalks, crosswalks, curb ramps, entrances to and restrooms within publicly accessible buildings, and parking lots serving publicly accessible buildings. *Project Owner: City of Corning*



## ROBERT A. HEALEY

Construction Administrator

Mr. Healey is a Construction Administrator in the Delta Facilities Group. Rob provides construction support, estimating for future projects, and SWPPP inspections and reports. His typical project responsibilities include supervision of ongoing construction, cost estimating and review of cost proposals, review of RFIs and submittals, issuing field work directives, and noncompliance reports and communication between the contractors and the owners.

### LICENSES/CERTIFICATIONS

Certified SWPPP Inspector: NY

### EDUCATION

SUNY Broome, AAS, Civil Engineering Technology, 2016

### EXPERIENCE

5 years total, 1 year with Delta

### RELEVANT PROJECT EXPERIENCE

#### DASNY CNYPC BUILDING 39 REHABILITATION

##### **Construction Administrator**

Delta is the prime consultant for the \$90M renovation of Building 39 at the Central New York Psychiatric Center in Marcy, NY. This project has three primary components to be accomplished within a closely coordinated and phased schedule. New fixed, non-operable windows, HVAC system upgrades and decentralization, new service buildings, and new switchgear are part of the project. Delta will provide architectural design, mechanical, electrical, plumbing, site/civil, survey, and CA services for this project to be completed in 2023. *Project Owner: Dormitory Authority of the State of New York*

#### NYS DOT MAYVILLE ADDITION

##### **Construction Administrator**

Delta designed a stand-alone, pre-engineered metal building for the NYSDOT Maintenance Headquarters. The structure will be approximately 12,000 sq. ft. and will be used primarily for vehicle storage. It will also include ancillary spaces for equipment storage, a stock room, toilet room facilities and a dedicated mechanical room. Delta will provide site/civil, architectural, structural, mechanical, electrical and plumbing services. *Project Owner: New York State Office of General Services*

#### FARMERS MUSEUM FEASIBILITY STUDY

##### **Construction Administrator**

The Farmers' Museum has collaborated with the Cooperative Extension's 4-H program to produce the Junior Livestock Show, which is the second largest youth competition in New York State. The Junior Livestock Show is an annual event that first started in 1947, and is held at the Iroquois Farm Showgrounds in Cooperstown, NY. With the growth in attendance for participants and the public, the need to assess the existing barn structure and related architectural improvements was required in order to provide a more flexible and visually appealing interior. Delta was selected to provide a feasibility study for the space and performed a structural analysis and conceptual plans to re-frame the barn.

*Project Owner: Fenimore Art Museum & The Farmers' Museum*

#### JOHNSON CITY TRAINING YARD PRELIMINARY DESIGN

##### **Construction Administrator**

As a part of a Master Services Procurement with NYSEG, Delta was tasked with the preliminary design of three modular training buildings in Johnson City, NY. The design also included paved parking lots, driveway reconstruction, stormwater management improvements, and utility extensions. Delta provided structural, architectural, and civil engineering services for this project. *Project Owner: NY State Electric & Gas Corp.*



# REFERENCES

**Delta** is proud of our track record and we stand behind our work. We strive to deliver the best solutions for our clients and to always provide responsive service. We encourage you to contact our references below to verify our past performance on comparable projects. We are confident they will attest to our commitment to provide excellent results on their behalf.

CLIENT NAME	CONTACT NAME AND TITLE	PHONE
Tioga County Department of Public Works	Richard Perkins, PE Deputy Commissioner	607-687-8556 perkinsr@co.tioga.ny.us
New York State Office of General Services	Sukhjot Singh Director of Consultant Procurement	518-473-7287 sukhjot.singh@ogs.state.ny.us

*"I enjoyed working with Delta and know we are in better shape due in part to your efforts."*

*-Richard J. Riesdorph, PE  
NYS Office of Parks, Recreation and Historic Preservation*

“

***We are very pleased with Delta as our architects and engineers. They are responsive to our needs, share our vision for the future, and have the staff, technology, and experience to make it come to life!***

”

*-David S. Richards, Ph.D., Superintendent of Schools  
Unatego Central School District*

*"SUNY Oneonta enjoys a long and rich history working with Delta on a wide variety of projects. New construction, rehabilitations, of older structures, installations of new equipment, developing preventative maintenance programs, conducting environmental audits and assessments to name just a few of the many topics they have assisted the College with over the years. Their honesty, professionalism, attention to details has always been exceptional and become a trademark of this company.*

*It has been both a privilege and an honor working with the team from Delta on such a wide variety of projects. Keep up the great work!"*

*-Terry A. Zimmer, Director of Facilities (retired)  
SUNY Oneonta*

# PLAN IMPLEMENTATION

As a full-service Engineering/Architecture firm **Delta Engineers, Architects, Land Surveyors, & Landscape Architect, DPC** is prepared to take on a wide variety of tasks as well as larger scale renovation and rehabilitation projects. Our Schenectady based staff is well positioned to quickly respond to situations and to be on site on short notice. With over 100 technical personnel and 30 plus licensed professionals, **Delta** can assemble an appropriate team for which ever task requires immediate attention.

The MVP Arena, was built approximately 32 years ago. It is natural that infrastructure such as the HVAC systems, the sound system, the roof, and facades will require attention. Concession and vendor areas will need to be modernized. Many of the Codes, ADA, Energy, and fire safety have evolved since the late 1980's requiring review and updating of the existing systems. **Delta's** experienced architects and engineers can assist the County in assessing, budgeting, and prioritizing tasks. Once budgets and priorities are established **Delta's** design teams will produce quality bid and construction documents. Specifically, **Delta** can assemble teams to:

## **4.1 Concessions and Food Service:**

- a. Our mechanical engineers and architects upon authorization shall draw up plans and specifications to install a new walk-in cooler on the main concourse level.
- b. Develop schematic concepts for a sports bar and upon approval develop full plans and specifications for bid and construction.
- c. As necessary, develop plans for modification of existing concession areas and kiosks.

## **4.2 Electrical and Communications: Our Electrical team will**

- a. Assess the overall power requirements for the arena including show systems and design transformer replacements as necessary.
- b. Assess lighting, upper-level signage, floor distribution power, etc. and develop appropriate bid documents.
- c. Replace/upgrade the main sound system.

## **4.3 Roof, Façade, and Access Upgrades: Our architects, structural engineers and related specialists will provide assessment of and designs for a variety of tasks as required including:**

- a. Replacement of the low roof.
- b. Seating replacements.
- c. Repair and replacement of stairs, sidewalks, handrails, etc.
- d. Window frames and soffits
- e. Masonry and columns.

## **4.4 While **Delta** has extensive in-house capability, we recognize and encourage participation of minority and women owned enterprises. We will team with local MBE/WBE professionals utilizing their unique talents when appropriate.**

# COUNTY OF ALBANY

## COST PROPOSAL FORM

### PROPOSAL IDENTIFICATION:

Title: Architect/Engineer Consulting Services for Various Projects in Albany County  
RFP Number: 2022-054

Proposers shall quote the following hourly rate per each discipline listed:

Principal/Director Architect	\$ <u>200</u>
Principal/Director Engineer	\$ <u>200</u>
Project Architect	\$ <u>115</u>
Project Engineer	\$ <u>115</u>
Landscape Architect	\$ <u>105</u>
Civil Engineer	\$ <u>105</u>
Structural Engineer	\$ <u>105</u>
Environmental Engineer	\$ <u>65</u>
Mechanical Engineer	\$ <u>105</u>
Plumbing/Fire Protection Engineer	\$ <u>105</u>
Electrical Engineer	\$ <u>105</u>
CAD Designer	\$ <u>65</u>
Administrative/General Technical Assistant	\$ <u>65</u>

# COUNTY OF ALBANY

## COST PROPOSAL FORM

### PROPOSAL IDENTIFICATION:

Title: Architect/Engineer Consulting Services for Various Projects in Albany County  
RFP Number: 2022-054

**COMPANY:** Delta Engineers, Architects, Land Surveyors,  
& Landscape Architects, DPC

**ADDRESS:** 860 Hooper Rd

**CITY, STATE, ZIP:** Endwell, NY 13760


**TEL. NO.:** 607-231-6610

**FAX NO.:** 607-231-6650

**FEDERAL TAX ID NO.:** 16-1294009

**REPRESENTATIVE:** Anthony R. Paniccia, PE, JD

**E-MAIL:** apaniccia@delta-eas.com

**SIGNATURE AND TITLE:**   
President & CEO

**DATE:** May 26, 2022

# COUNTY OF ALBANY

## PROPOSAL FORM

### PROPOSAL IDENTIFICATION:

Title: Architect/Engineer Consulting Services for Various Projects in Albany County  
RFP Number: 2022-054

### THIS PROPOSAL IS SUBMITTED TO:

Pamela O Neill, Purchasing Agent  
Albany County Department of General Services  
Purchasing Division  
112 State Street, Room 1000  
Albany, NY 12207

1. The undersigned Proposer proposes and agrees, if this Proposal is accepted, to enter into a Contract with the owner in the form included in the Contract Documents to complete all Work as specified or indicated in the Contract Documents for the Contract Price and within the Contract Time indicated in this Proposal and in accordance with the Contract Documents.
2. Proposer accepts all of the terms and conditions of the Instructions to Proposers, including without limitation those dealing with the Disposition of Proposal Security. This Proposal may remain open for ninety (90) days after the day of Proposal opening. Proposer will sign the Contract and submit the Contract Security and other documents required by the Contract Documents within fifteen days after the date of County's Notice of Award.
3. In submitting this Proposal, Proposer represents, as more fully set forth in this Contract, that:

- (a) Proposer has examined copies of all the Contract Documents and of the following addenda: (If none, so state)

Date    May 25, 2022                      Number    1

(receipt of all of which is hereby acknowledges) and also copies of the Notice to Proposers and the Instructions to Proposers;

- (b) Proposer has examined the site and locality where the Work is to be performed, the legal requirements (federal, state and local laws, ordinances, rules and regulations) and the conditions affecting cost, progress or performance of the Work and has made such independent investigations as Proposer deems necessary;

(c) This Proposal is genuine and not made in the interest of or on behalf of any undisclosed person, firm or corporation and is not submitted in conformity with any agreement or rules of any group, association, organization or corporation; Proposer has not directly or indirectly induced or solicited any other Proposer to submit a false or sham Proposal; PROPOSER has not solicited or induced any person, firm or a corporation to refrain from Proposing; and Proposer has not sought by collusion to obtain for himself any advantage over any other Proposer or over the owner.

4. Proposer will complete the Work for the following prices(s): (Attach Proposal)
5. Proposer agrees to commence the Work within the number of calendar days or by the specific date indicated in the Contract. Proposer agrees that the Work will be completed within the number of Calendar days or by the specific date indicated in the contract.
6. The following documents are attached to and made a condition of this Proposal:
- (a) Non-Collusive Bidding Certificate (Attachment "A")
  - (b) Acknowledgment by Bidder (Attachment "B")
  - (c) Vendor Responsibility Questionnaire (Attachment "C")
  - (d) Iranian Energy Divestment Certification (Attachment "D")
  - (e) MS-4-1 Certification Statement: Stormwater Discharges (Attachment "E")
7. Communication concerning this Proposal shall be addressed to:
- Anthony R. Paniccia
- 860 Hooper Rd
- Endwell, NY 13760
- Phone: 607-231-6610
8. Terms used in this Proposal have the meanings assigned to them in the Contract and General Provisions.

**ATTACHMENT "A"**  
**NON-COLLUSIVE BIDDING CERTIFICATE PURSUANT TO**  
**SECTION 103-D OF THE NEW YORK STATE GENERAL MUNICIPAL LAW**

A. By submission of this bid, each bidder and each person signing on behalf of any bidder certifies, and in the case of a joint bid, each party thereto certifies as to its own organizations, under penalty of perjury, that to the best of knowledge and belief:

(1) The prices in this bid have been arrived at independently without collusion, consultation, communication, or agreement, for the purpose of restricting competition, as to any matter relating to such prices with any other bidder or with any competitor.

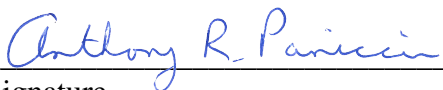
(2) Unless otherwise required by law, the prices which have been quoted in this bid have not knowingly been disclosed by the bidder and will not knowingly be disclosed by the bidder, directly or indirectly, prior to opening, to any bidder or to any competitor.

(3) No attempt has been made or will be made by the bidder to induce any other person, partnership or corporation to submit or not to submit a bid for the purpose of restricting competition.

A bid shall not be considered for award nor shall any award be made where (1), (2), and (3) above have not been complied with; provided, however, that in any case the bidder cannot make the foregoing certification, the bidder shall so state and shall furnish with the bid a signed statement which sets forth in detail the reasons thereof. Where (1), (2), and (3) above have not been complied with, the bid shall not be considered for any award nor shall any award be made unless the head of the Purchasing Unit to the political subdivision, public department, agency or official thereof to which the bid is made, or his designee, determines that such disclosure was not made for the purpose of restricting competition.

The fact that a bidder (a) has published price lists, rates, or tariffs covering items being procured, (b) has informed prospective customer of proposed or pending publication of new or revised price lists for such items, or (c) has sold the same items to other customers at the same prices being bid, does not constitute, without more, a disclosure within the meaning of paragraph "A" above.

B. Any bid hereafter made to any political subdivision of the state or any public department, agency or official thereof by a corporate bidder for work or services performed or to be performed or goods sold or to be sold, where competitive bidding is required by statute, rule, regulation, local law, and where such bid contains the certification referred to in paragraph "A" of this section, shall be deemed to have been authorized by the Board of Directors of the bidder, and such authorization shall be deemed to include the submission of the bid and the inclusion therein of the certificate as to non-collusion as the act and deed of the corporation

  
\_\_\_\_\_  
Signature

\_\_\_\_\_  
President & CEO  
Title

Delta Engineers, Architects, Land Surveyors,  
& Landscape Architects, DPC  
\_\_\_\_\_  
Company Name

\_\_\_\_\_  
May 26, 2022

Date

**ATTACHMENT "B"**  
**ACKNOWLEDGMENT BY PROPOSER**

If Individual or Individuals:

STATE OF \_\_\_\_\_ )  
COUNTY OF \_\_\_\_\_ ) SS.:

On this \_\_\_\_\_ day of \_\_\_\_\_, 20\_\_\_\_, before me personally appeared \_\_\_\_\_ to me known and known to me to be the same person(s) described in and who executed the within instrument, and he (or they severally) acknowledged to me that he (or they) executed the same.

\_\_\_\_\_  
Notary Public, State of \_\_\_\_\_

Qualified in \_\_\_\_\_

Commission Expires \_\_\_\_\_

If Corporation:

STATE OF New York )  
COUNTY OF Broome ) SS.:

On this 26th day of May, 2022, before me personally appeared Anthony R. Paniccia, PE, JD to me known, who, being by me sworn, did say that he resides at (give address) 300 North Hudson St, Johnson City, NY 13790; that he is the (give title) President & CEO of the (name of corporation) Delta Engineers, Architects, Land Surveyors, & Landscape Architects, DP; the corporation described in and which executed the above instrument; that he knows the seal of the corporation, and that the seal affixed to the instrument is such corporate seal; that it was so affixed by order of the board of directors of the corporation, and that he signed his name thereto by like order.

Heather Fish  
Notary Public – State of New York  
No. 01FI6388774  
Qualified in Broome County  
My Commission Expires March 11, 2023

Heather Fish  
Notary Public, State of New York  
Qualified in Broome County  
Commission Expires 3-11-2023

If Partnership:

STATE OF \_\_\_\_\_ )  
COUNTY OF \_\_\_\_\_ ) SS.:

On the \_\_\_\_\_ day of \_\_\_\_\_, 20\_\_\_\_, before me personally came \_\_\_\_\_ to me known to be the individual who executed the foregoing, and who, being duly sworn, did depose and say that he / she is a partner of the firm of \_\_\_\_\_ and that he / she has the authority to sign the same, and acknowledged that he / she executed the same as the act and deed of said partnership.

\_\_\_\_\_  
Notary Public, State of \_\_\_\_\_

Qualified in \_\_\_\_\_

Commission Expires \_\_\_\_\_



**ATTACHMENT “C”  
ALBANY COUNTY  
VENDOR RESPONSIBILITY QUESTIONNAIRE**

1. VENDOR IS: <input checked="" type="checkbox"/> PRIME CONTRACTOR			
2. VENDOR'S LEGAL BUSINESS NAME  Delta Engineers, Architects, Land Surveyors, & Landscape Architects, DPC		3. IDENTIFICATION NUMBERS a) FEIN # 16-1294009 b) DUNS # 135835148	
4. D/B/A – Doing Business As (if applicable) & COUNTY FIELD:  N/A - Broome County		5. WEBSITE ADDRESS (if applicable)  delta-eas.com	
6. ADDRESS OF PRIMARY PLACE OF BUSINESS/EXECUTIVE OFFICE  860 Hooper Rd, Endwell, NY 13760		7. TELEPHONE NUMBER 607-231-6600	8. FAX NUMBER  607-231-6650
9. ADDRESS OF PRIMARY PLACE OF BUSINESS/EXECUTIVE OFFICE <i>IN NEW YORK STATE, if different from above</i>		10. TELEPHONE NUMBER	11. FAX NUMBER
12. AUTHORIZED CONTACT FOR THIS QUESTIONNAIRE  Name Anthony R. Paniccia, PE, JD Title President & CEO Telephone Number 607-231-6610 Fax Number 607-231-6650 e-mail apaniccia@delta-eas.com			
13. LIST ALL OF THE VENDOR'S PRINCIPAL OWNERS.			
a) NAME See attached.	TITLE	b) NAME	TITLE
c) NAME	TITLE	d) NAME	TITLE
A DETAILED EXPLANATION IS REQUIRED FOR EACH QUESTION ANSWERED WITH A “YES,” AND MUST BE PROVIDED AS AN ATTACHMENT TO THE COMPLETED QUESTIONNAIRE. YOU MUST PROVIDE ADEQUATE DETAILS OR DOCUMENTS TO AID THE COUNTY IN MAKING A DETERMINATION OF VENDOR RESPONSIBILITY. PLEASE NUMBER EACH RESPONSE TO MATCH THE QUESTION NUMBER.			
14. DOES THE VENDOR USE, OR HAS IT USED IN THE PAST FIVE (5) YEARS, ANY OTHER BUSINESS NAME, FEIN, or D/B/A OTHER THAN THOSE LISTED IN ITEMS 2-4 ABOVE? List all other business name(s), Federal Employer Identification Number(s) or any D/B/A names and the dates that these names or numbers were/are in use. Explain the relationship to the vendor. <span style="float: right;"> <input checked="" type="checkbox"/> Yes   <input type="checkbox"/> No         </span>			
15. ARE THERE ANY INDIVIDUALS NOW SERVING IN A MANAGERIAL OR CONSULTING CAPACITY TO THE VENDOR, INCLUDING PRINCIPAL OWNERS AND OFFICERS, WHO NOW SERVE OR IN THE PAST ONE (1) YEARS HAVE SERVED AS: <div style="display: flex; justify-content: space-between; align-items: flex-end;"> <div style="width: 80%;"> <p>a) An elected or appointed public official or officer?  <i>List each individual's name, business title, the name of the organization and position elected or appointed to, and dates of service</i></p> <p>b) An officer of any political party organization in Albany County, whether paid or unpaid?  <i>List each individuals name, business title or consulting capacity and the official political position held with applicable service dates.</i></p> </div> <div style="width: 15%;"> <p><input checked="" type="checkbox"/> Yes   <input type="checkbox"/> No</p> <p><input type="checkbox"/> Yes   <input checked="" type="checkbox"/> No</p> </div> </div>			

16.	<p>WITHIN THE PAST (5) YEARS, HAS THE VENDOR, ANY INDIVIDUALS SERVING IN MANAGERIAL OR CONSULTING CAPACITY, PRINCIPAL OWNERS, OFFICERS, MAJOR STOCKHOLDER(S) (10% OR MORE OF THE VOTING SHARES FOR PUBLICLY TRADED COMPANIES, 25% OR MORE OF THE SHARES FOR ALL OTHER COMPANIES), AFFILIATE OR ANY PERSON INVOLVED IN THE BIDDING OR CONTRACTING PROCESS:</p> <p>a) 1. been suspended, debarred or terminated by a local, state or federal authority in connection with a contract or contracting process; <input type="checkbox"/> Yes <input checked="" type="checkbox"/> No</p> <p>2. been disqualified for cause as a bidder on any permit, license, concession franchise or lease;</p> <p>3. entered into an agreement to a voluntary exclusion from bidding/contracting;</p> <p>4. had a bid rejected on an Albany County contract for failure to comply with the MacBride Fair Employment Principles;</p> <p>5. had a low bid rejected on a local, state or federal contract for failure to meet statutory affirmative action or M/WBE requirements on a previously held contract;</p> <p>6. had status as a Women's Business Enterprise, Minority Business Enterprise or Disadvantaged Business Enterprise, de-certified, revoked or forfeited;</p> <p>7. been subject to an administrative proceeding or civil action seeking specific performance or restitution in connection with any local, state or federal government contract;</p> <p>8. been denied an award of a local, state or federal government contract, had a contract suspended or had a contract terminated for non-responsibility; or</p> <p>9. had a local, state or federal government contract suspended or terminated for cause prior to the completion of the term of the contract.</p> <p>b) been indicted, convicted, received a judgment against them or a grant of immunity for any business-related conduct constituting a crime under local, state or federal law including but not limited to, fraud extortion, bribery, racketeering, price-fixing, bid collusion or any crime related to truthfulness and/or business conduct? <input type="checkbox"/> Yes <input checked="" type="checkbox"/> No</p> <p>c) been issued a citation, notice, violation order, or are pending an administrative hearing or proceeding or determination of violations of: <input type="checkbox"/> Yes <input checked="" type="checkbox"/> No</p> <p>1. federal, state or local health laws, rules or regulations.</p>
17.	<p>IN THE PAST THREE (3) YEARS, HAS THE VENDOR OR ITS AFFILIATES <b>H</b> HAD ANY CLAIMS, JUDGMENTS, INJUNCTIONS, LIENS, FINES OR PENALTIES SECURED BY ANY GOVERNMENTAL AGENCY? <input type="checkbox"/> Yes <input checked="" type="checkbox"/> No</p> <p>Indicate if this is applicable to the submitting vendor or affiliate. State whether the situation(s) was a claim, judgment, injunction, lien or other with an explanation. Provide the name(s) and address(es) of the agency, the amount of the original obligation and outstanding balance. If any of these items are open, unsatisfied, indicate the status of each item as "open" or "unsatisfied."</p>
18.	<p>DURING THE PAST THREE (3) YEARS, HAS THE VENDOR FAILED TO:</p> <p>a) file returns or pay any applicable federal, state or city taxes? <input type="checkbox"/> Yes <input checked="" type="checkbox"/> No  <i>Identify the taxing jurisdiction, type of tax, liability year(s), and tax liability amount the vendor failed to file/pay and the current status of the liability.</i></p> <p>b) file returns or pay New York State unemployment insurance? <input type="checkbox"/> Yes <input checked="" type="checkbox"/> No  <i>Indicate the years the vendor failed to file/pay the insurance and the current status of the liability.</i></p> <p>c) Property Tax <input type="checkbox"/> Yes <input checked="" type="checkbox"/> No  <i>Indicate the years the vendor failed to file.</i></p>
19.	<p>HAVE ANY BANKRUPTCY PROCEEDINGS BEEN INITIATED BY OR AGAINST THE VENDOR OR ITS AFFILIATES <b>I</b> WITHIN THE PAST SEVEN (7) YEARS (WHETHER OR NOT CLOSED) OR IS ANY BANKRUPTCY PROCEEDING PENDING BY OR AGAINST THE VENDOR OR ITS AFFILIATES REGARDLESS OF THE DATE OF FILING? <input type="checkbox"/> Yes <input checked="" type="checkbox"/> No</p> <p>Indicate if this is applicable to the submitting vendor or affiliate. If it is an affiliate, include the affiliate's name and FEIN. Provide the court name, address and docket number. Indicate if the proceedings have been initiated, remain pending or have been closed. If closed, provide the date closed.</p>
20.	<p>IS THE VENDOR CURRENTLY INSOLVENT, OR DOES VENDOR CURRENTLY HAVE REASON TO BELIEVE THAT AN INVOLUNTARY BANKRUPTCY PROCEEDING MAY BE BROUGHT AGAINST IT? Provide financial information to support the vendor's current position, for example, Current Ration, Debt Ration, Age of Accounts Payable, Cash Flow and any documents that will provide the agency with an understanding of the vendor's situation. <input type="checkbox"/> Yes <input checked="" type="checkbox"/> No</p>

21.	IN THE PAST FIVE (5) YEARS, HAS THE VENDOR OR ANY AFFILIATES <sup>1</sup> :	<input type="checkbox"/> Yes	<input checked="" type="checkbox"/> No
	a) defaulted or been terminated on, or had its surety called upon to complete, any contract (public or private) awarded;		
Indicate if this is applicable to the submitting vendor or affiliate. Detail the situation(s) that gave rise to the negative action, any corrective action taken by the vendor and the name of the contracting agency.			

<sup>1</sup> “Affiliate” meaning: (a) any entity in which the vendor owns more than 50% of the voting stock; (b) any individual, entity or group of principal owners or officers who own more than 50% of the voting stock of the vendor; or (c) any entity whose voting stock is more than 50% owned by the same individual, entity or group described in clause (b). In addition, if a vendor owns less than 50% of the voting stock of another entity, but directs or has the right to direct such entity’s daily operations, that entity will be an “affiliate” for purposes of this questionnaire.

## FEIN #

**CERTIFICATION:**

The undersigned certifies that he/she:

- Has not altered the content of the questions in the questionnaire in any manner;
- Has read and understands all of the items contained in the questionnaire and any pages attached by the submitting vendor;
- Has supplied full and complete responses to each item therein to the best of his/her knowledge, information ad belief;
- Is knowledgeable about the submitting vendor's business and operations;
- Understands that Albany County will rely on the information supplied in the questionnaire when entering into a contract with the vendor;
- Is under duty to notify the Albany County Purchasing Division of any material changes to the vendor's responses.

Signature of Owner Anthony R. Paniccia  
DPC  
Printed Name of Signatory Anthony R. Paniccia, PE, JD  
Title President & CEO

Heather Fish  
Notary Public – State of New York  
No. 01FI6388774  
Qualified in Broome County  
My Commission Expires March 11, 2023

Heather Fish

Printed Name

Heather Fish

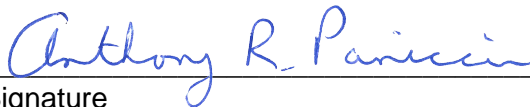
Signature

5/26/22

Date

**Attachment "D"**  
**Certification Pursuant to Section 103-g**  
**Of the New York State**  
**General Municipal Law**

- A. By submission of this bid/proposal, each bidder/proposer and each person signing on behalf of any bidder/proposer certifies, and in the case of a joint bid, each party thereto certifies as to its own organization, under penalty of perjury, that to the best of its knowledge and belief that each bidder is not on the list created pursuant to paragraph (b) of subdivision 3 of Section 165-a of the New York State Finance Law.
- B. A Bid/Proposal shall not be considered for award, nor shall any award be made where the condition set forth in Paragraph A above has not been complied with; provided, however, that in any case the bidder/proposer cannot make the foregoing certification set forth in Paragraph A above, the bidder/proposer shall so state and shall furnish with the bid a signed statement which sets forth in detail the reasons therefor. Where Paragraph A above cannot be complied with, the Purchasing Unit to the political subdivision, public department, agency or official thereof to which the bid/proposal is made, or his designee, may award a bid/proposal, on a case by case business under the following circumstances:
1. The investment activities in Iran were made before April 12, 2012, the investment activities in Iran have not been expanded or renewed after April 12, 2012, and the Bidder/Proposer has adopted, publicized and is implementing a formal plan to cease the investment activities in Iran and to refrain from engaging in any new investments in Iran; or
  2. The political subdivision makes a determination that the goods or services are necessary for the political subdivision to perform its functions and that, absent such an exemption, the political subdivision would be unable to obtain the goods or services for which the contract is offered. Such determination shall be made in writing and shall be a public document.

  
\_\_\_\_\_  
Signature

\_\_\_\_\_  
President & CEO

\_\_\_\_\_  
Title

Delta Engineers, Architects, Land Surveyors,  
& Landscape Architects, DPC  
\_\_\_\_\_  
Company Name

May 26, 2022  
Date

**Sheet MS4-1: Bidder/Proposer Certification Statement (to be used with Section 34 Part A – General Contracts)**

As a bidder seeking to provide services on behalf of Albany County, I certify under penalty of law that I understand and agree to comply with the terms and conditions of the New York State Pollutant Discharge Elimination System ("SPDES") General Permit for Stormwater Discharges from Municipal Separate Storm Sewer Systems (MS4 Permit) and Albany County Local Law 7 of 2007, and agree to implement any Best Management Practices or corrective actions identified by Albany County or an authorized representative thereof as necessary to maintain compliance. I understand that Albany County must comply with the terms and conditions of the aforementioned MS4 Permit, and that it is unlawful for any person to directly or indirectly cause or contribute to a violation of water quality standards. I am also aware that County Local Law 7 of 2007 prohibits any activities that cause or contribute to a violation of the County's SPDES permit. Further, I understand that any non-compliance by Albany County will not diminish, eliminate or lessen my own liability.

**Name of Third Party Entity:** Delta Engineers, Architects, Land Surveyors, & Landscape Architects, DPC

**Address:** 860 Hooper Rd

Endwell, NY 13760

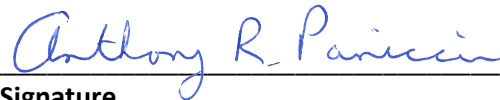
**Phone Number(s):** 607-231-6600

**Description of activities** to be performed by your firm or organization within Albany County are related to the Albany County Storm Water Management Program (SWMP) (include any activities that have the potential to generate or prevent pollution and/or affect water quality):

To be determined upon award of contract.

**Description of where the work is to be performed** within Albany County facilities:

MVP Arena



**Signature**

Anthony R. Paniccia, PE, JD

**Printed Name**

President & CEO

**Title**

May 26, 2022

**Date**

