

COUNTY OF ALBANY

**WATERVLIET SHAKER ROAD (CR157) PHASE III ROADWAY
IMPROVEMENT PROJECT**

RFB-2022-105

ADDENDUM #2

December 7, 2022

The following Addendum No. 2 consisting of five (5) pages (including this cover page) is hereby issued on the 7th day of December 2022, in connection with the Request for Bids 2022-105 as requested by the Albany County Department of Public Works.

COUNTY OF ALBANY

RFB-2022-105

**WATERVLIET SHAKER ROAD (CR157) PHASE III ROADWAY IMPROVEMENT
PROJECT**

ADDENDUM #2

The following information is provided as a result of a question(s) posed by vendor(s):

ITEM #1: Regarding the hydrant, are the bollards, valve and tee to be included in each item? Or are the valves, fittings and bollards paid under a separate item?

Response #1: The hydrant item, Item 663.1301, shall include all work required to install the hydrant as shown in the detail on Dwg. No. UTD-01, except for the valve/valve box and the 6" ductile iron pipe, which are paid for separately. The additional items shown on Utility Plan 7, DWG. UTP-07, have been put into the contract in the event that the valve is no longer functioning properly and needs to be replaced out to the main.

An amendment will be issued shortly with revised Dwgs. UTP-07 and UTD-01 to clarify.

ITEM #2: Please see Amendment #1 and drawings attached as part of this addendum.

End of Addendum #1

AMENDMENT NO. 1 TO:
20-C558
Watervliet Shaker Road (CR 157) Roadway Improvement Project
IN THE LETTING OF
December 15, 2022

TRANSMITTAL MEMO

This amendment was initiated by Albany County and incorporates changes to the contract plans, proposal, and/or estimate. The following changes, additions and revisions shall be incorporated as identified in this amendment into the original PS&E submission and bid documents:

1. The following change has been made to Dwg. No. UTD-01 in the Contract Plans:

Notes have been added to clearly define how the hydrant installation is paid for. The detail has been updated to reflect the changes from the most recent version of the Latham Water District Standard Sheets.

Replace Dwg. No. **UTD-01** with Dwg. **No. UTD-01A1**.

2. The following change has been made to Dwg. No. UTP-07 in the Contract Plans:

"(IF REQUIRED)" has been removed from the callout after "ITEM 663.0106".

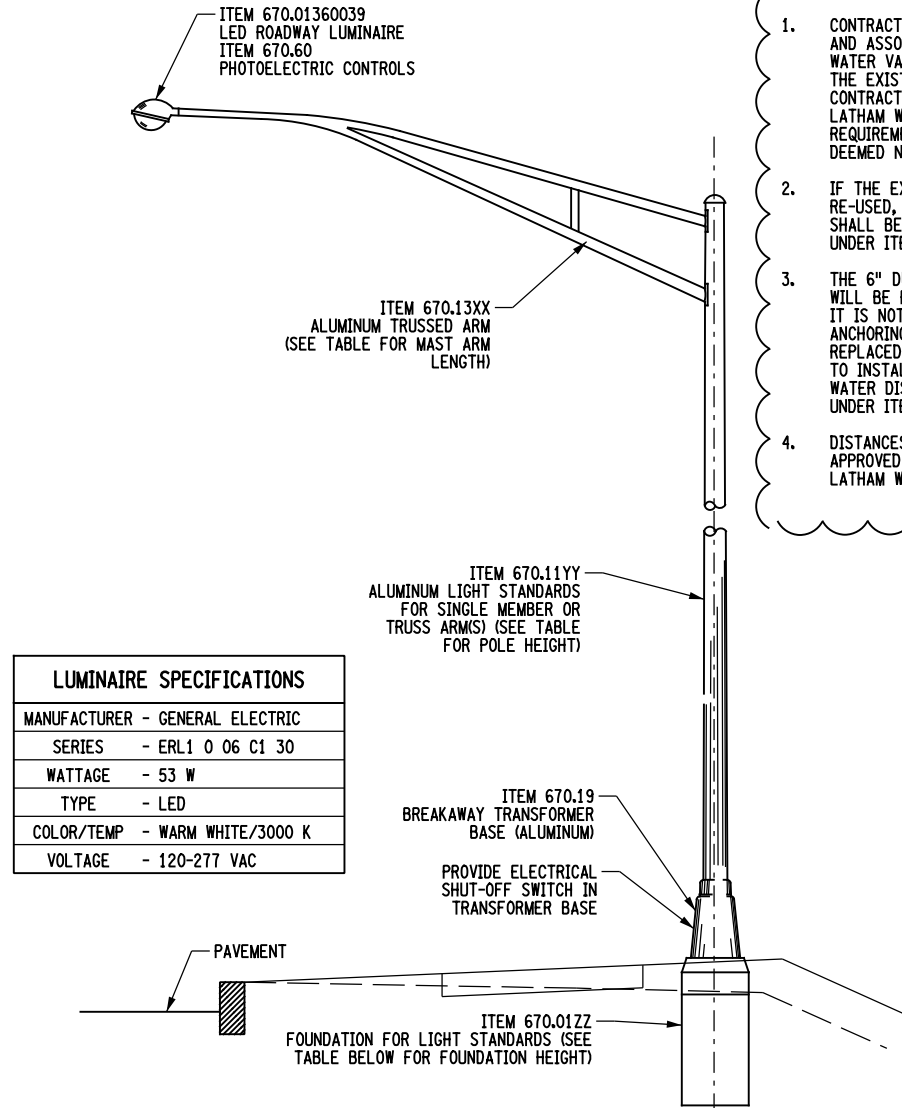
Replace Dwg. No. **UTP-07** with Dwg. **No. UTP-07A1**.

The following question was sent in from potential bidders:

1. Regarding the hydrant, are the bollards, valve, and tee to be included in each item? Or are the valves, fittings, and bollards paid under a separate item.

The bollards shall be included under Item 663.1301 Hydrant. The valves, water pipe, and fittings (if required) shall be paid for under their respective items. The detail on Dwg. No. UTD-01 has been updated to reflect this information.

PLEASE BE GOVERNED ACCORDINGLY WHEN SUBMITTING BIDS



LUMINAIRE SPECIFICATIONS	
MANUFACTURER	- GENERAL ELECTRIC
SERIES	- ERL1 0 06 C1 30
WATTAGE	- 53 W
TYPE	- LED
COLOR/TEMP	- WARM WHITE/3000 K
VOLTAGE	- 120-277 VAC

HIGHWAY LIGHT POLE DETAIL
NOT TO SCALE

NOTE: REFER TO NYSDOT STANDARD SHEETS 670-01 AND 670-02 FOR ADDITIONAL INFORMATION.

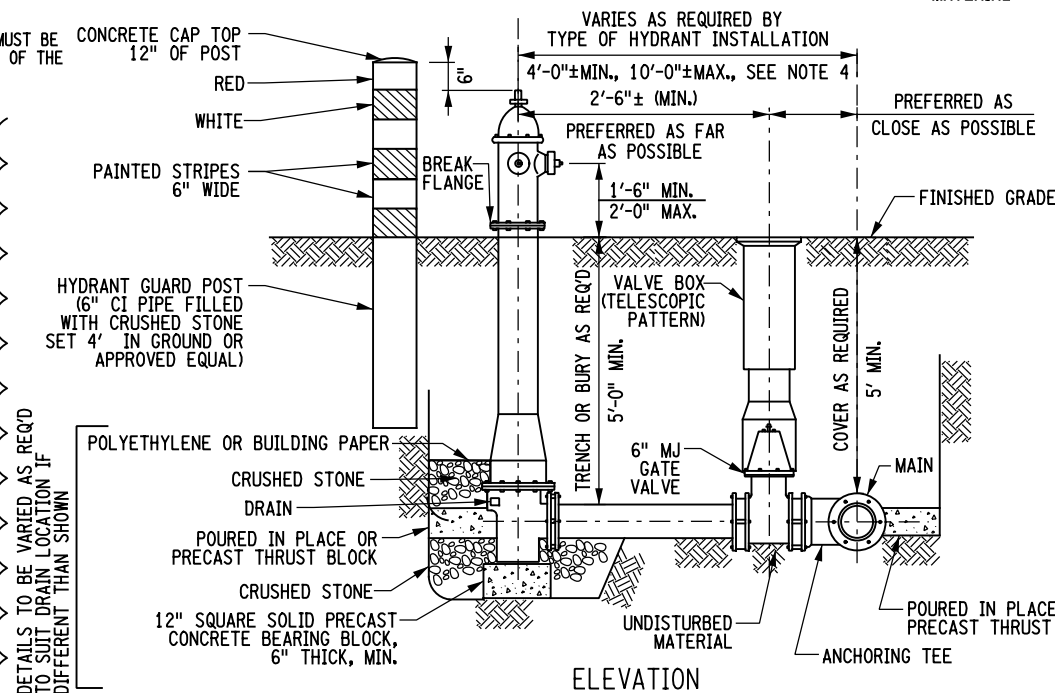
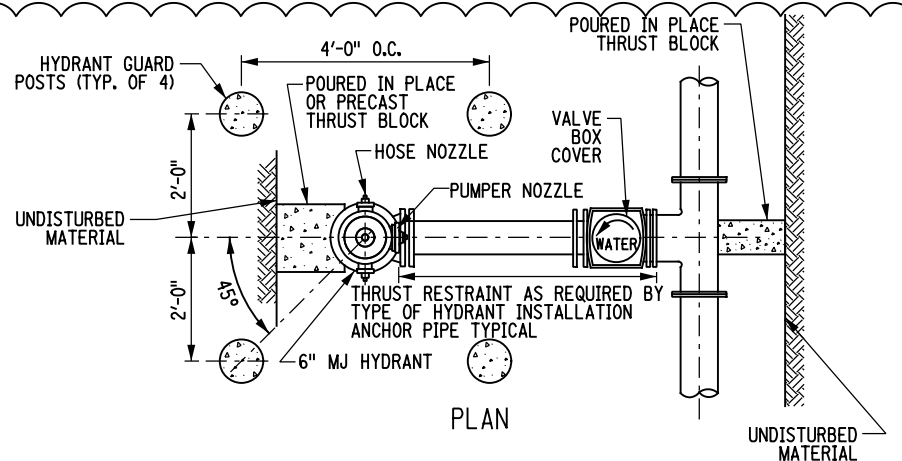
LIGHT POLE ITEM NUMBERS						
LIGHT POLE NO.	ITEM 670.13XX		ITEM 670.11YY		ITEM 670.01ZZ	
	MAST ARM LENGTH (FT)	XX	LUMINAIRE MOUNTING HEIGHT (FT)	YY	FOUNDATION HEIGHT (FT)	ZZ
LP-1	12	12	36	36	7	07
LP-2	12	12	36	36	7	07
LP-3	12	12	36	36	7	07
LP-3A	12	12	25 (SEE NOTE 1)	-	SEE NOTE 1	-
LP-4	12	12	36	36	7	07
LP-5	12	12	36	36	7	07
LP-6	12	12	36	36	7	07
LP-7	12	12	36	36	7	07
LP-8	12	12	36	36	7	07
LP-9	12	12	36	36	7	07
LP-10	12	12	36	36	7	07
LP-11	12	12	25 (SEE NOTE 1)	-	SEE NOTE 1	-

- NOTES:
- THE LUMINAIRES FOR LP-3A AND LP-11 WILL BE AFFIXED TO EXISTING UTILITY POLES.

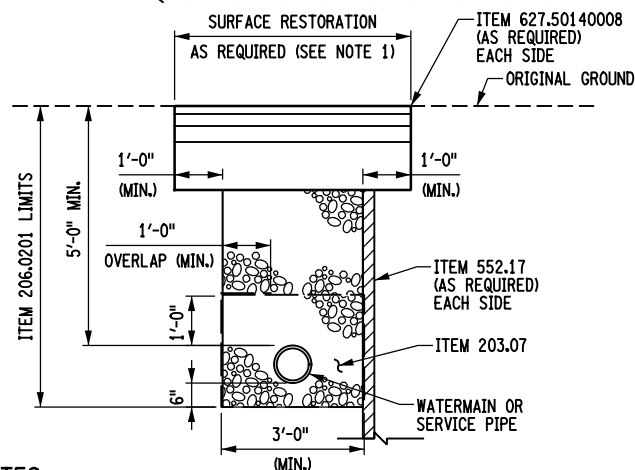
WARNING: IT IS A VIOLATION OF THE NEW YORK STATE LAW FOR ANY PERSON, UNLESS ACTING UNDER THE DIRECTION OF A LICENSED PROFESSIONAL ENGINEER, TO ALTER IN ANY WAY ANY PLANS, SPECIFICATIONS, PLATS OR REPORTS TO WHICH THE SEAL OF A PROFESSIONAL ENGINEER HAS BEEN APPLIED.

HYDRANT NOTES:

- CONTRACTOR SHALL INSTALL NEW FIRE HYDRANT AND ASSOCIATED ANCHOR PIPE TO THE EXISTING WATER VALVE. IF IT IS FIELD DETERMINED THAT THE EXISTING VALVE CANNOT BE RE-USED, CONTRACTOR SHALL COORDINATE WITH THE LATHAM WATER DISTRICT FOR NOTICES AND REQUIREMENTS TO SHUT DOWN THE MAIN IF DEEMED NECESSARY.
- IF THE EXISTING WATER VALVE CANNOT BE RE-USED, A NEW VALVE AND VALVE BOX ASSEMBLY SHALL BE INSTALLED AND PAID SEPARATELY UNDER ITEMS 663.1206 AND 663.42.
- THE 6" DUCTILE IRON CEMENT LINED WATER PIPE WILL BE PAID SEPARATELY UNDER ITEM 663.0106. IT IS NOT ANTICIPATED THAT THE EXISTING ANCHORING TEE AT THE MAIN WILL NEED TO BE REPLACED. ALL OTHER ITEMS AND WORK REQUIRED TO INSTALL THE NEW HYDRANT PER LATHAM WATER DISTRICT STANDARDS SHALL BE INCLUDED UNDER ITEM 663.1301.
- DISTANCES GREATER THAN 10'-0" MUST BE APPROVED BY THE SUPERINTENDENT OF THE LATHAM WATER DISTRICT.



HYDRANT INSTALLATION DETAIL
NOT TO SCALE

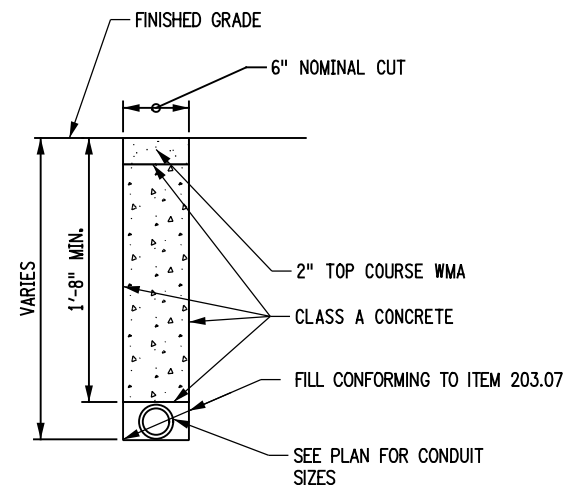


NOTES:

- REFER TO TYPICAL SECTIONS ON DWG. NOS. TYP-01 THRU TYP-06 FOR SURFACE RESTORATION ITEMS.
- FOR DUCTILE IRON PIPE AND FITTINGS; ALL STRAIGHT SECTION OF PIPE SHALL USE PUSH-ON JOINTS, ALL BENDS SHALL BE RESTRAINED MECHANICAL JOINTS. ALL JOINTS TO BE INSTALLED PER THE MANUFACTURER RECOMMENDATIONS.
- WATER MAIN INSTALLATION SHALL BE IN ACCORDANCE WITH THE STANDARD SPECIFICATIONS AND DETAILS OF THE LATHAM WATER DISTRICT.

TYPICAL WATER MAIN TRENCH

SCALE: 1/4" = 1'-0"

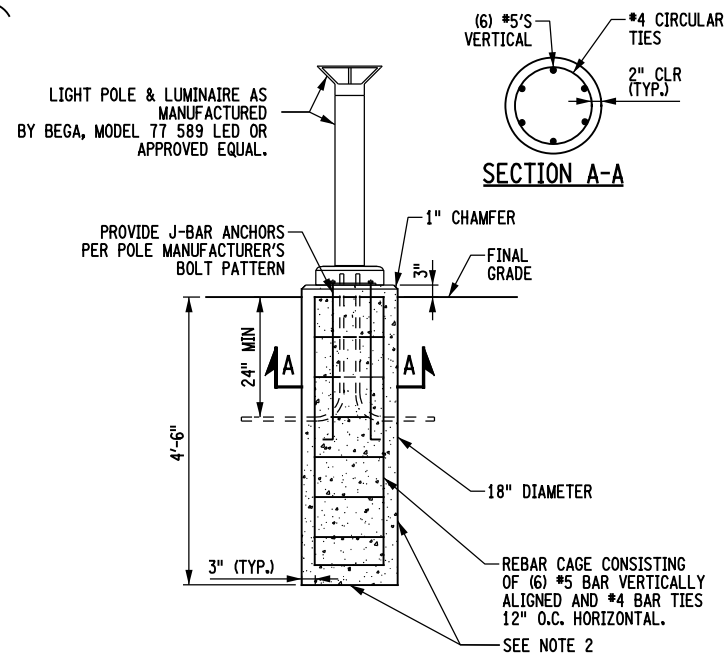


NOTES:

- ALL WORK TO BE PAID FOR UNDER ITEM 206.03 - CONDUIT EXCAVATION RESTORATION.

TRENCH DETAIL FOR CONDUIT INSTALLATION

NOT TO SCALE



ITEM 608.72225108 SPECIAL NOTE:



- INSTALLATION OF LIGHT BOLLARDS, LUMINAIRES AND ANCHORS SHALL BE PER THE RECOMMENDATIONS OF THE MANUFACTURER UNLESS OTHERWISE DIRECTED BY THE ENGINEER IN CHARGE.
- INSTALLATION OF FOUNDATIONS SHALL CONFORM TO "METHODS FOR PLACING FOOTING" DETAIL ON NYSDOT STANDARD SHEET 680-01 AND SPECIFICATION ITEM 670.0105 - FOUNDATION FOR LIGHT STANDARDS, 5 FEET LONG.
- POST CONSTRUCTION SHALL CONSIST OF A ONE PIECE ALUMINUM BODY WITH A ONE PIECE DIE-CAST ALUMINUM LAMP ENCLOSURE AND A BASE INTERNALLY WELDED INTO AN ASSEMBLY. ANCHOR BASE SHALL BE HEAVY CAST ALUMINUM SLOTTED FOR PRECISE ALIGNMENT.
- FINISH SHALL BE BLACK POLYESTER POWDER COAT.
- HARDWARE SHALL BE GALVANIZED OR STAINLESS STEEL.

LUMINAIRE SPECIFICATIONS - SHARED USE PATH	
MANUFACTURER	- BEGA
SERIES	- 77 589
WATTAGE	- 30 W
TYPE	- LED
COLOR/TEMP	- WARM WHITE/3000 K
DISTRIBUTION	- SYMMETRICAL
VOLTAGE	- 240 V

MULTI-USE PATH BOLLARD LIGHT DETAIL
ITEM 608.72225108
N.T.S.

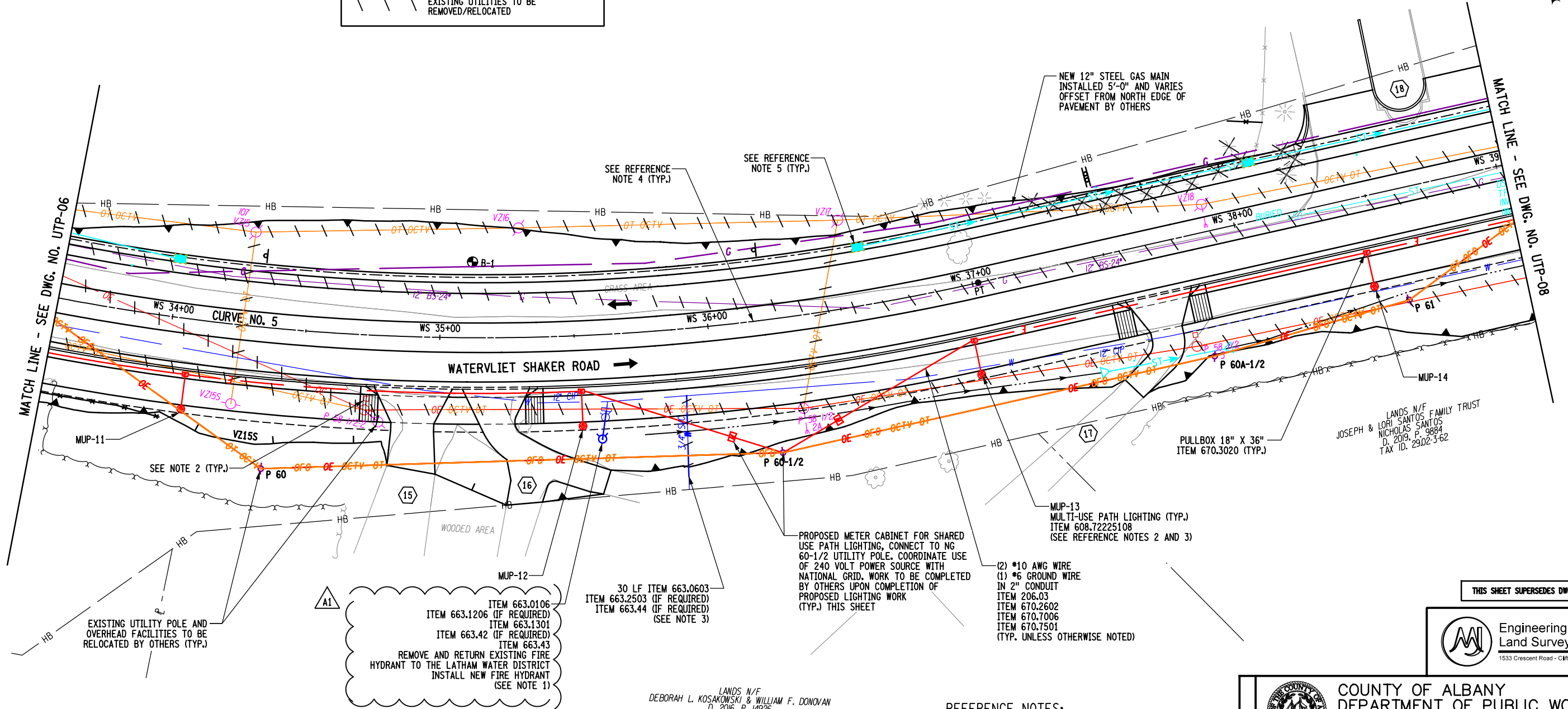
THIS SHEET SUPERSEDES DWG. NO. UTD-01

Engineering and
Land Surveying, P.C.
1533 Crescent Road - Clifton Park, NY 12065

 COUNTY OF ALBANY DEPARTMENT OF PUBLIC WORKS 449 NEW SALEM ROAD VOORHEESVILLE, NEW YORK 12186 518-765-2786			
WATERVLIET SHAKER ROAD (CR 157)		UTILITY DETAILS	
DRAWN BY: MEB	SCALE: AS SHOWN	DRAWING NUMBER: UTD-01A1	SHEET: 79
CHECKED BY: LMW	DATE: NOVEMBER 2022	PROJ. I.D. NO.: 20-C558	
APPROVED BY: BJC	DATE: 12/7/2022	PROJ. I.D. NO.: 20-C558	

UTILITY LEGEND	
— OE —	OVERHEAD ELECTRIC (NATIONAL GRID)
— E —	UNDERGROUND ELECTRIC (NATIONAL GRID)
— OFO —	OVERHEAD FIBER OPTIC (FIRST LIGHT FIBER/CROWN CASTLE)
— OCTV —	OVERHEAD CABLE/TELEVISION/FIBER OPTIC (SPECTRUM)
— T —	UNDERGROUND TELEPHONE/FIBER OPTIC (VERIZON)
— OT —	OVERHEAD TELEPHONE/FIBER OPTIC (VERIZON)
\\	EXISTING UTILITIES TO BE REMOVED/RELOCATED

LANDS N/F
MEMORY GARDENS, INC.
D. 2585, P. 424
TAX ID. 18.00-1-44



EXISTING UTILITY INFORMATION SHOWN ON THESE PLANS HAS BEEN OBTAINED BY SURVEY AND RECORD PLAN INFORMATION. THIS INFORMATION IS DESIGNATED AS QUALITY LEVEL C (QLC), UNLESS OTHERWISE NOTED IN THE PLANS.

WARNING: IT IS A VIOLATION OF THE NEW YORK STATE LAW FOR ANY PERSON, UNLESS ACTING UNDER THE DIRECTION OF A LICENSED PROFESSIONAL ENGINEER, TO ALTER IN ANY WAY ANY PLANS, SPECIFICATIONS, PLATS OR REPORTS TO WHICH THE SEAL OF A PROFESSIONAL ENGINEER HAS BEEN APPLIED.

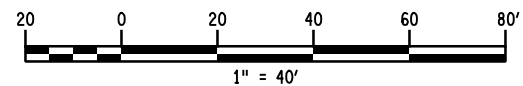
NOTES:

- CONTRACTOR SHALL INSTALL NEW FIRE HYDRANT AND ASSOCIATED ANCHOR PIPE TO THE EXISTING WATER VALVE. IF IT IS FIELD DETERMINED THAT THE EXISTING VALVE CAN NOT BE RE-USED CONTRACTOR SHALL REPLACE THE VALVE AND ANCHOR PIPE TO THE TEE AT THE MAIN. CONTRACTOR SHALL COORDINATE WITH THE LATHAM WATER DISTRICT FOR NOTICES AND REQUIREMENTS TO SHUT DOWN THE MAIN IF DEEMED NECESSARY.
- THE EXISTING LIGHT FIXTURES ON UTILITY POLES TO BE RELOCATED SHALL BE RETURNED TO THE TOWN OF COLONIE.
- THIS RELOCATION IS REQUIRED TO ENSURE THAT THE SERVICE LINE IS NO LESS THAN 5' BELOW THE PROPOSED SURFACE ELEVATION.

LANDS N/F
DEBORAH L. KOSAKOWSKI & WILLIAM F. DONOVAN
D. 2016, P. 14926
TAX ID. 29.02-3-35


REFERENCE NOTES:

- SEE DWG. NO. UTP-01 FOR UTILITY NOTES.
- SEE DWG. NOS. UTD-01 AND UTD-02 FOR UTILITY DETAILS.
- SEE DWG. NO. UTT-01 FOR PROPOSED LIGHT POLE SCHEDULES AND UTILITY ADJUSTMENT TABLES.
- SEE DWG. NOS. GNP-01 THRU GNP-12 FOR GENERAL CONSTRUCTION PLANS.
- SEE DWG. NOS. DRP-01 THRU DRP-12 FOR DRAINAGE PLANS AND DWG. NO. DRT-01 FOR DRAINAGE TABLE.



THIS SHEET SUPERSEDES DWG. NO. UTP-07

Engineering and Land Surveying, P.C.
1533 Crescent Road - Clifton Park, NY 12065

REMARKS	 COUNTY OF ALBANY DEPARTMENT OF PUBLIC WORKS 449 NEW SALEM ROAD VOORHEESVILLE, NEW YORK 12186 518-765-2786	
	WATERVLIET SHAKER ROAD (CR 157)	
	UTILITY PLAN - 07	
	REV. #	DATE
DRAWN BY: MEB	SCALE: AS SHOWN	DRAWING NUMBER: UTP-07A1
CHECKED BY: LMW	DATE: NOVEMBER 2022	SHEET: 87
APPROVED BY: BJC	PROJ. I.D. NO.: 20-C558	