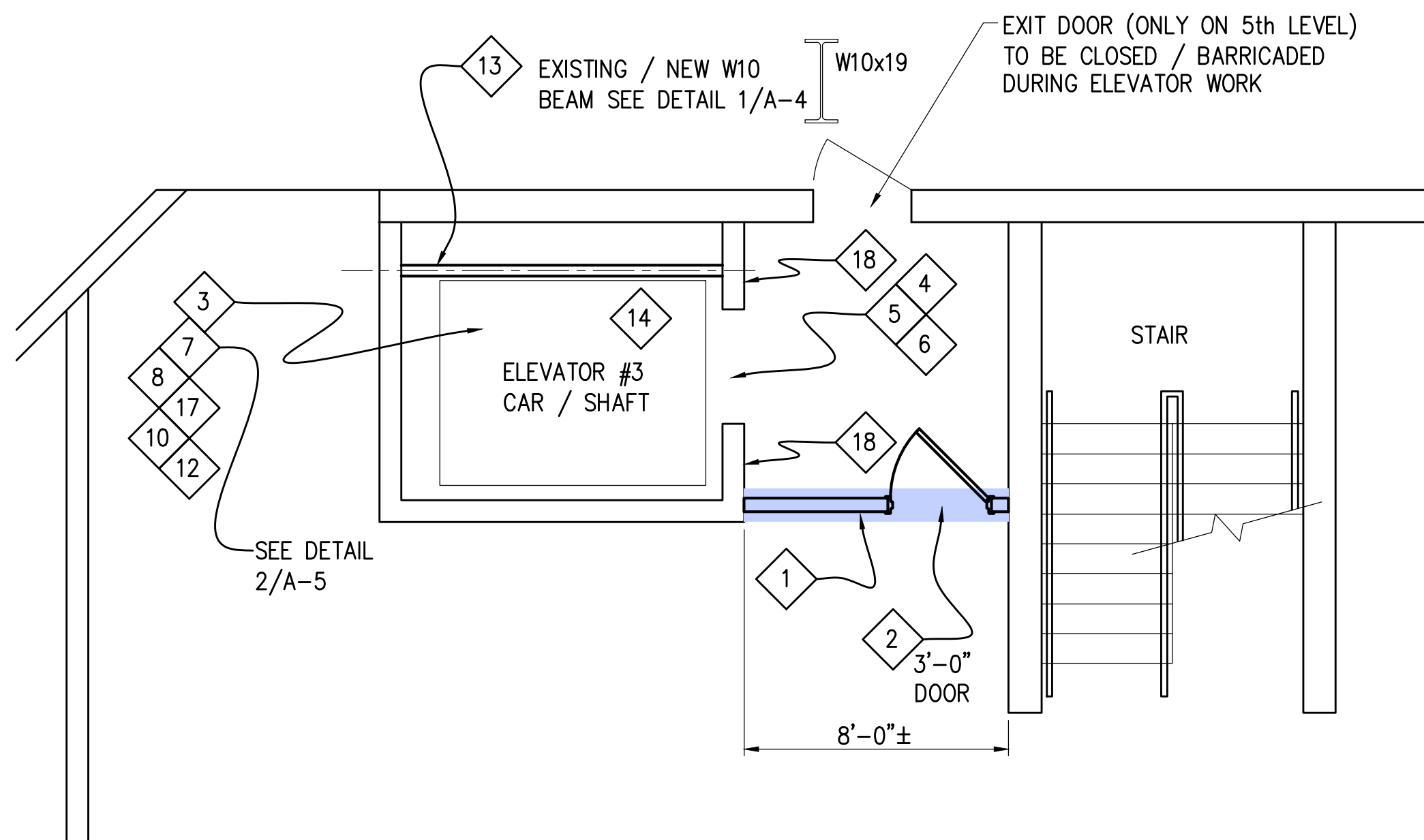


# AI





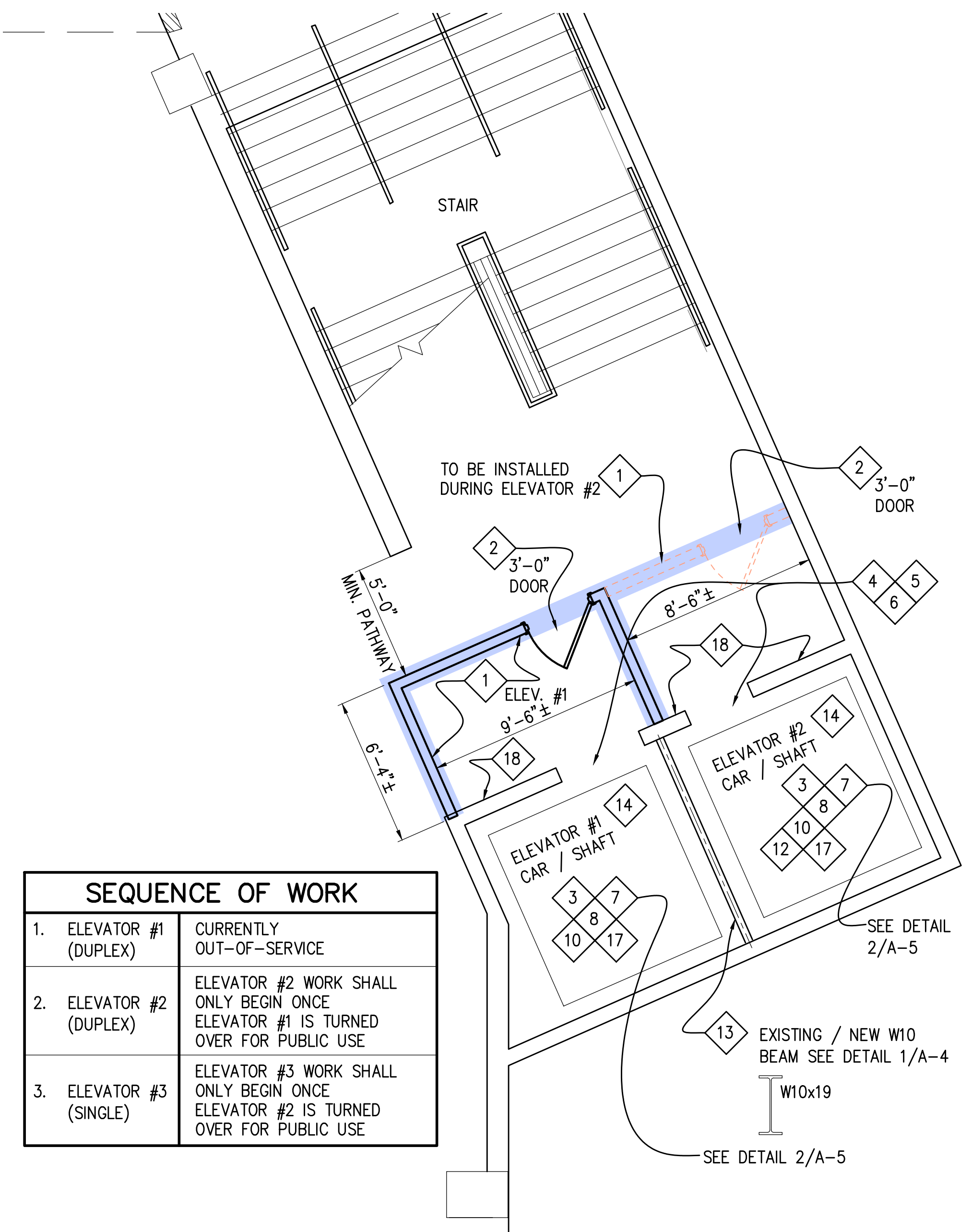
ELEVATOR #3 : LEVELS 3 THRU 5  
 $\frac{1}{4}"=1'-0"$

GENERAL NOTES :

1. REFER TO "KONE ELEVATOR SITE SAFETY REQUIREMENTS GUIDE FOR GENERAL CONTRACTOR" FOR ADDITIONAL INFORMATION NOT SHOWN ON DRAWINGS.
2. GENERAL CONTRACTOR SHALL ASSIST KONE ELEVATOR AS NOTED IN GUIDE AND AS NOTED ON DRAWINGS.
3. REFER TO "KONE TIMES UNION PARKING GARAGE DUPLEX ELEVATORS #1 & #2 PGS 1-31 DATED 11/9/2020 AND SINGLE ELEVATOR #3, PGS 1-19 DATED 11/10/2020" FOR FURTHER INFORMATION, ELEVATOR DIMENSIONS ATTACHMENTS DETAILS, ETC.

**CONSTRUCTION KEY NOTES :**

1. GC TO SUPPLY AND INSTALL FIRE RATED, FLAME RESISTANT LUMBER. 2x4" STUD AND PLYWOOD SHEATHING BARRICADE WALLS, BUILT TO BOTTOM OF EXISTING CEILING PER LAYOUT/LIMITS SHOWN. 2x4" STUDS SPACED 16" O.C. W/ PAINTED 5/8" CDX PLYWOOD SHEATHING. GC TO DISMANTLE AND REMOVE UPON ELEVATOR SUBSTANTIAL COMPLETION AND/OR DIRECTION FROM KONE ELEVATOR
2. GC TO SUPPLY AND INSTALL HINGED LOCKABLE DOOR, 6 FT OPENING AT GROUND LEVEL AND 3 FOOT OPENING AT ALL REMAINING LEVELS AS NOTED. GC TO DISMANTLE AND REMOVE UPON ELEVATOR SUBSTANTIAL COMPLETION AND/OR DIRECTION FROM KONE ELEVATOR.
3. GC TO SUPPLY AND INSTALL STEEL SCAFFOLDING, FULL ELEVATOR SHAFT HEIGHT (60ft.±) FOR GC TO PERFORM VARIOUS TASKS/WORK WITHIN THE SHAFT AS REQUIRED BY KONE; INSTALL NEW STEEL W10x19 RAIL ATTACHMENT BEAMS (CENTER BEAM @ DUPLEX ELEVATORS AND RIGHT SIDE @ SINGLE ELEVATOR), INSTALL KONE PROVIDED HOISTBEAM, INSTALL KONE PROVIDED TUBE STEEL LIFELINE BEAM AND SHAFT REPAIRS (MASONRY PATCHING AND/OR PROTRUSION REMOVALS). REFER TO "KONE TIMES UNION PARKING GARAGE DUPLEX ELEVATORS #1 & #2, PAGES 1-31 DATED 11/9/2020 AND SINGLE ELEVATOR #3, PAGES 1-19 DATED 11/10/2020". FOR FURTHER INFORMATION, ELEVATOR DIMENSIONS, ATTACHMENT DETAILS, ETC. GC TO DISMANTLE AND REMOVE SCAFFOLDING ONCE SHAFT WORK IS COMPLETE. KONE TO INSPECT AND APPROVE SHAFT WORK PRIOR TO REMOVING SCAFFOLDING.
4. GC SHALL REMOVE EXISTING ELEVATOR STEEL DOOR-BUCK FRAMES AND THRESHOLDS. GC SHALL ALSO REMOVE PERIMETER GROUT ENTRANCE WALL BACK TO LIMITS OF PRE-CAST SHAFT, REFER TO "KONE ELEVATOR SITE SAFETY REQUIREMENTS, GUIDE FOR GENERAL CONTRACTORS" FOR FURTHER DESCRIPTION / INFORMATION. GC TO INSTALL NON-SHRINK GROUT WITHIN/SURROUNDING NEW ELEVATOR DOOR FRAME AND POUR NEW CONCRETE ELEVATOR THRESHOLDS UPON ELEVATOR SUBSTANTIAL COMPLETION AND/OR DIRECTION FROM KONE ELEVATOR. ALL WORK NOTED, TYPICAL EACH ELEVATOR LANDING.
5. ONCE GC HAS REMOVED EXISTING ENTRANCE DOOR FRAME AND GROUT, GC SHALL SUPPLY AND INSTALL FREE-STANDING, REMOVABLE 3-RAIL BARRIER ACROSS HOISTWAY OPENING; TOE BOARD, MID & TOP RAIL. REFER TO "KONE ELEVATOR SITE SAFETY REQUIREMENTS, GUIDE FOR GENERAL CONTRACTORS" PAGE 8 FOR FURTHER DESCRIPTION/ INFORMATION. ALL WORK NOTED, TYPICAL EACH ELEVATOR LANDING
6. ONCE GC HAS REMOVED EXISTING ENTRANCE DOOR FRAME AND GROUT, GC SHALL SUPPLY AND INSTALL FULL COVERING HOISTWAY ENTRY PROTECTION, CONSISTING OF NYLON MESH OR REINFORCED PLASTIC, TO PREVENT MATERIAL FROM FALLING INTO SHAFT DURING KONE ELEVATOR INSTALLATION. REFER TO "KONE ELEVATOR SITE SAFETY REQUIREMENTS, GUIDE FOR GENERAL CONTRACTORS" PAGE 9 FOR FURTHER DESCRIPTION/ INFORMATION. ALL WORK NOTED, TYPICAL EACH ELEVATOR LANDING.
7. GC SHALL INSTALL KONE PROVIDED HOISTBEAM AND TUBE STEEL LIFELINE BEAM MOUNTED ON NEW STEEL SUPPORT RAILS ANCHORED TO PRE-CAST WALLS AT TOP OF ELEVATOR SHAFT. REFER TO "KONE ELEVATOR SITE SAFETY REQUIREMENTS, GUIDE FOR GENERAL CONTRACTORS" PAGES 10-14 FOR FURTHER DESCRIPTION / INFORMATION AND "KONE TIMES UNION PARKING GARAGE DUPLEX ELEVATORS #1 & #2 PAGES 1-31 DATED 11/9/2020 AND SINGLE ELEVATOR #3, PADGES 1-19 DATED 11/10/2020" FOR DIMENSIONING, LOCATION AND INSTALLATION INSTRUCTIONS.
8. GC SHALL CLEAN ELEVATOR PIT; REMOVE ALL DEBRIS AND MISCELLANEOUS ITEMS ONCE KONE REMOVES EXISTING ELEVATOR. GC TO CAREFULLY REMOVE EXISTING PIT LADDER, TURN OVER TO KONE FOR RE-USE AND FUTURE INSTALLATION BY KONE ELEVATOR.
9. GC SHALL REMOVE AND LEGALLY DISPOSE EXISTING MACHINE ROOM DOOR AND FRAME, GC SHALL SUPPLY AND INSTALL NEW FIRE-RATED FRP DOOR AND FRAME TO MATCH EXISTING OPENING. FRP-DOOR BY SPECIAL-LITE (OR APPROVED EQUAL) SL-FR SERIES FIRE-RATED, PEBBLE GRAIN FACE SHEET, SS DOOR HARDWARE, SS CONTINUOUS DOOR HINGE, SS KICK PLATE. BTM DOOR LOUVER, CLOSER, WEATHER-STRIPPING, THRESHOLD, ETC.
10. GC TO PATCH ALL PRE-CAST SHAFT WALL OPENINGS DUE TO REMOVED ELECTRICAL CONDUITS, UNUSED PENETRATIONS, MISC. HOLES, ETC. ALL SHAFT AND PIT WALLS.
11. GC TO SUPPLY AND INSTALL METAL PLATE OVER EXISTING ABANDONED ELEVATOR HYDRAULIC CYLINDER OPENING AT BASE OF THE ELEVATOR PIT.
12. GC SHALL REMOVE ALL OFFSETS, LEDGES OR PROJECTIONS WITHIN THE ELEVATOR HOISTWAY GREATER THAN 4" OR TAPER PROJECTION TO NOT LESS THAN 75 DEGREES. GC SHALL INSTALL NON-SHRINK GROUT CANT TAPER ALONG EXISTING FDN AND SLT WALL TRANSITION AT ELEVATOR #3
13. NEW W10x19 STEEL BEAMS FOR ELEVATOR RAIL ATTACHMENTS. SEE DETAIL 1/A-4 FOR FURTHER INFORMATION. GC SHALL SUPPLY AND INSTALL (8) NEW CENTER BEAMS AT DUPLEX ELEVATORS #1 & #2 AND REMOVE AND REPLACE (3) RIGHT SIDE BEAMS AND SUPPLY AND INSTALL AN ADDITIONAL (5) RIGHT SIDE BEAMS AT SINGLE ELEVATOR #3.
14. KONE SUPPLIED HOIST BEAM AND TUBE STEEL LIFELINE SUPPORT RAILS ANCHORED TO PRE-CAST SHAFT WALLS. SEE DETAIL 2/A-5 FOR FURTHER INFORMATION.
15. GC SHALL PROVIDE CORE DRILL PENETRATIONS ((3)-1" DIA.) AND RECTANGULAR OPENING (12"x16") IN PRE-CAST MACHINE ROOM WALL FOR MC, AT SINGLE ELEVATOR #3 MACHINE ROOM.
16. REMOVE AND LEGALLY DISPOSE EXISTING SUMP PUMP. GC SHALL SUPPLY AND INSTALL NEW SUMP PUMP TO MATCH EXISTING SIZE, HP, CONFIGURATION, ETC
17. UPON COMPLETION OF ELEVATOR CAB BY KONE, GC SHALL SUPPLY AND INSTALL NEW CAB FLOORING, BY GERFLOR, GTI MAX OR APPROVED EQUAL.
18. GC SHALL PAINT EXISTING PRE-CAST WALLS ALONG FRONT FACE OF ELEVATORS.
19. GC SHALL COVER PORTION OF EXISTING SHAFT LOUVER AND PROVIDE DEFLECTOR ROOF CAP AT ELEVATOR #3.



ELEVATORS #1 & #2 : LEVEL 2 THRU 5  
1/4"=1'-0"

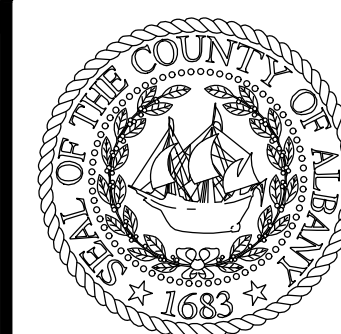
BID DRAWINGS  
NOT FOR CONSTRUCTION

## HALF SIZE

### REPRODUCTIONS OF RECORD PLANS

[illegible]

**WARNING :** It is a violation of the New York State Education Law for any person, unless acting under the direction of a Licensed Professional Engineer, to alter in any way, any plans, specifications, plots or reports to which the seal of a Professional Engineer has been applied.



**County of Albany**  
**Department of General Services**  
**Division of Facilities Engineering**

---

112 STATE STREET • ALBANY, NEW YORK • 12207  
518-447-7210

TIMES UNION CENTER GARAGE ELEVATORS PROJECT  
GC TO ASSIST KONE ELEVATOR INSTALLATION  
ELEVATORS PLAN : LEVELS 2 THRU 5 & KEY NOTES

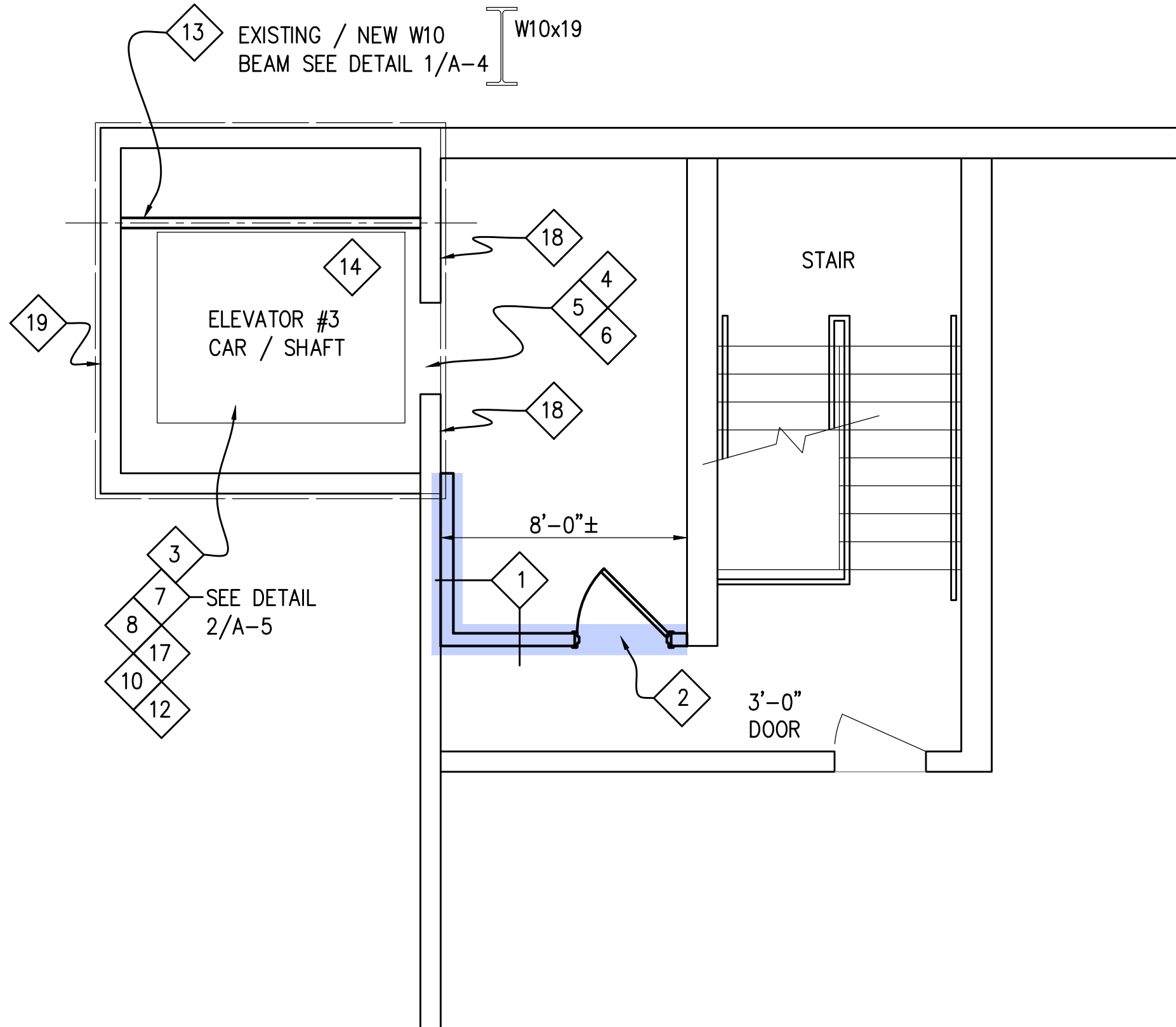
APPROVED BY:	MM	SCALE:	AS SHOWN
DESIGNED BY:	DA	DATE:	APRIL 2021
DRAWN BY:	DA	PROJ. I.D. NO.:	REF# 2021-054

DRAWING NUMBER :

# A2



Albany County\_Facilities\_Engineering-C:\Users\DADDAR~1\LB\AppData\Local\Temp\ApPublin\_26524\TUC\_Garage\_Elevator\_Renovation.dwg [Level\_6\_Notes\_A3] April 15, 2021 -- 1:20pm daddario



ELEVATOR #3 : LEVEL 6

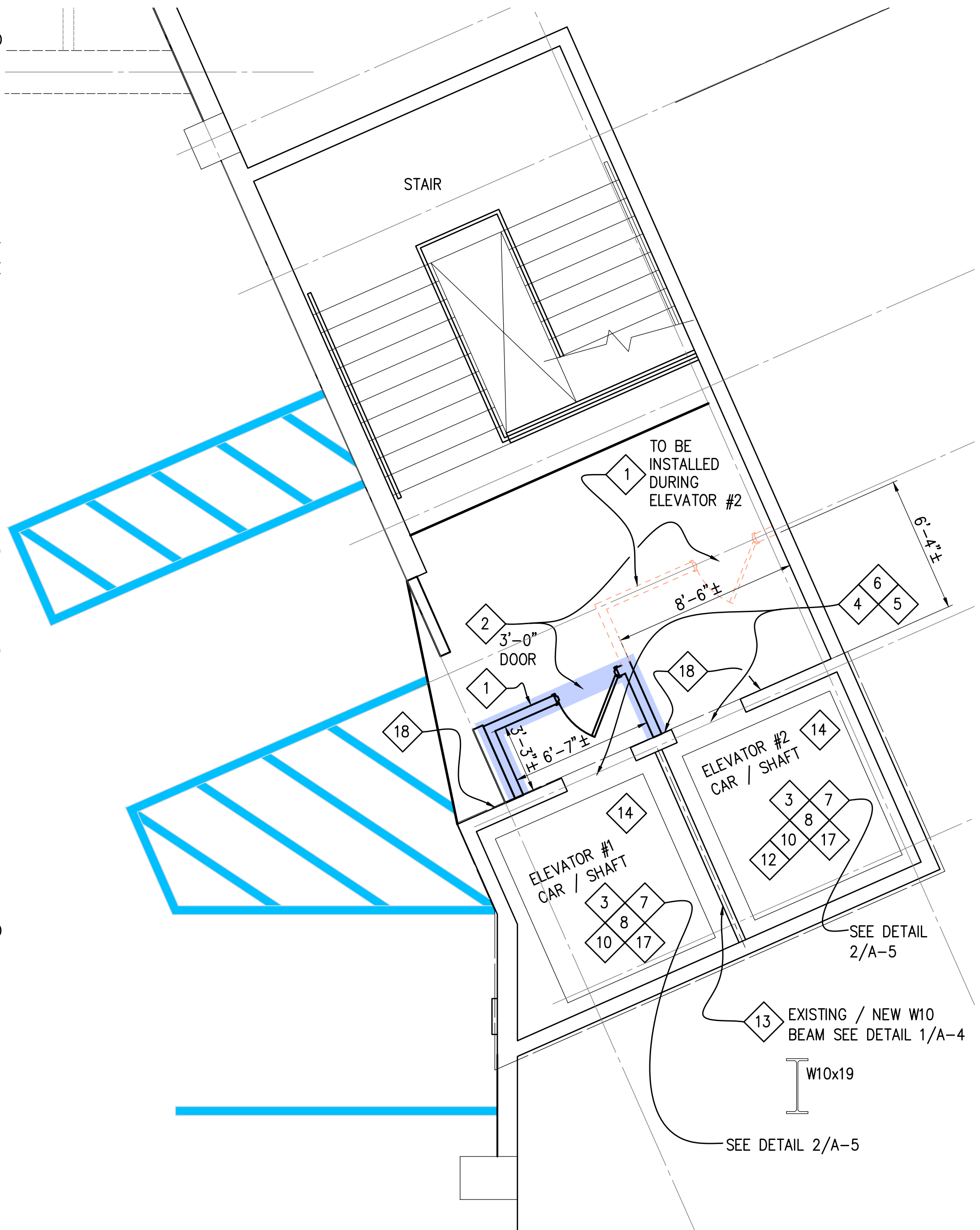
1/4"=1'-0"

GENERAL NOTES :

- REFER TO "KONE ELEVATOR SITE SAFETY REQUIREMENTS GUIDE FOR GENERAL CONTRACTOR" FOR ADDITIONAL INFORMATION NOT SHOWN ON DRAWINGS.
- GENERAL CONTRACTOR SHALL ASSIST KONE ELEVATOR AS NOTED IN GUIDE AND AS NOTED ON DRAWINGS.
- REFER TO "KONE TIMES UNION PARKING GARAGE DUPLEX ELEVATORS #1 & #2 PGS 1-31 DATED 11/9/2020 AND SINGLE ELEVATOR #3, PGS 1-19 DATED 11/10/2020" FOR FURTHER INFORMATION, ELEVATOR DIMENSIONS ATTACHMENTS DETAILS, ETC.

CONSTRUCTION KEY NOTES :

- GC TO SUPPLY AND INSTALL FIRE RATED, FLAME RESISTANT LUMBER. 2x4" STUD AND PLYWOOD SHEATHING BARRICADE WALLS, BUILT TO BOTTOM OF EXISTING CEILING PER LAYOUT/LIMITS SHOWN. 2x4" STUDS SPACED 16" O.C. W/ PAINTED 5/8" CDX PLYWOOD SHEATHING. GC TO DISMANTLE AND REMOVE UPON ELEVATOR SUBSTANTIAL COMPLETION AND/OR DIRECTION FROM KONE ELEVATOR
- GC TO SUPPLY AND INSTALL HINGED LOCKABLE DOOR, 6 FT OPENING AT GROUND LEVEL AND 3 FOOT OPENING AT ALL REMAINING LEVELS AS NOTED. GC TO DISMANTLE AND REMOVE UPON ELEVATOR SUBSTANTIAL COMPLETION AND/OR DIRECTION FROM KONE ELEVATOR.
- GC TO SUPPLY AND INSTALL STEEL SCAFFOLDING, FULL ELEVATOR SHAFT HEIGHT (60ft.±) FOR GC TO PERFORM VARIOUS TASKS/WORK WITHIN THE SHAFT AS REQUIRED BY KONE; INSTALL NEW STEEL W10x19 RAIL ATTACHMENT BEAMS (CENTER BEAM @ DUPLEX ELEVATORS AND RIGHT SIDE @ SINGLE ELEVATOR), INSTALL KONE PROVIDED HOISTBEAM, INSTALL KONE PROVIDED TUBE STEEL LIFELINE BEAM AND SHAFT REPAIRS (MASONRY PATCHING AND/OR PROTRUSION REMOVALS). REFER TO "KONE TIMES UNION PARKING GARAGE DUPLEX ELEVATORS #1 & #2, PAGES 1-31 DATED 11/9/2020 AND SINGLE ELEVATOR #3, PAGES 1-19 DATED 11/10/2020". FOR FURTHER INFORMATION, ELEVATOR DIMENSIONS, ATTACHMENT DETAILS, ETC. GC TO DISMANTLE AND REMOVE SCAFFOLDING ONCE SHAFT WORK IS COMPLETE. KONE TO INSPECT AND APPROVE SHAFT WORK PRIOR TO REMOVING SCAFFOLDING.
- GC SHALL REMOVE EXISTING ELEVATOR STEEL DOOR-BUCK FRAMES AND THRESHOLDS. GC SHALL ALSO REMOVE PERIMETER GROUT ENTRANCE WALL BACK TO LIMITS OF PRE-CAST SHAFT, REFER TO "KONE ELEVATOR SITE SAFETY REQUIREMENTS, GUIDE FOR GENERAL CONTRACTORS" FOR FURTHER DESCRIPTION / INFORMATION. GC TO INSTALL NON-SHRINK GROUT WITHIN/SURROUNDING NEW ELEVATOR DOOR FRAME AND POUR NEW CONCRETE ELEVATOR THRESHOLDS UPON ELEVATOR SUBSTANTIAL COMPLETION AND/OR DIRECTION FROM KONE ELEVATOR. ALL WORK NOTED, TYPICAL EACH ELEVATOR LANDING.
- ONCE GC HAS REMOVED EXISTING ENTRANCE DOOR FRAME AND GROUT, GC SHALL SUPPLY AND INSTALL FREE-STANDING, REMOVABLE 3-RAIL BARRIER ACROSS HOISTWAY OPENING; TOE BOARD, MID & TOP RAIL. REFER TO "KONE ELEVATOR SITE SAFETY REQUIREMENTS, GUIDE FOR GENERAL CONTRACTORS" PAGE 8 FOR FURTHER DESCRIPTION/ INFORMATION. ALL WORK NOTED, TYPICAL EACH ELEVATOR LANDING
- ONCE GC HAS REMOVED EXISTING ENTRANCE DOOR FRAME AND GROUT, GC SHALL SUPPLY AND INSTALL FULL COVERING HOISTWAY ENTRY PROTECTION, CONSISTING OF NYLON MESH OR REINFORCED PLASTIC, TO PREVENT MATERIAL FROM FALLING INTO SHAFT DURING KONE ELEVATOR INSTALLATION. REFER TO "KONE ELEVATOR SITE SAFETY REQUIREMENTS, GUIDE FOR GENERAL CONTRACTORS" PAGE 9 FOR FURTHER DESCRIPTION/ INFORMATION. ALL WORK NOTED, TYPICAL EACH ELEVATOR LANDING.
- GC SHALL INSTALL KONE PROVIDED HOISTBEAM AND TUBE STEEL LIFELINE BEAM MOUNTED ON NEW STEEL SUPPORT RAILS ANCHORED TO PRE-CAST WALLS AT TOP OF ELEVATOR SHAFT. REFER TO "KONE ELEVATOR SITE SAFETY REQUIREMENTS, GUIDE FOR GENERAL CONTRACTORS" PAGES 10-14 FOR FURTHER DESCRIPTION / INFORMATION AND "KONE TIMES UNION PARKING GARAGE DUPLEX ELEVATORS #1 & #2 PAGES 1-31 DATED 11/9/2020 AND SINGLE ELEVATOR #3, PADGES 1-19 DATED 11/10/2020" FOR DIMENSIONING, LOCATION AND INSTALLATION INSTRUCTIONS.
- GC SHALL CLEAN ELEVATOR PIT; REMOVE ALL DEBRIS AND MISCELLANEOUS ITEMS ONCE KONE REMOVES EXISTING ELEVATOR. GC TO CAREFULLY REMOVE EXISTING PIT LADDER, TURN OVER TO KONE FOR RE-USE AND FUTURE INSTALLATION BY KONE ELEVATOR.
- GC SHALL REMOVE AND LEGALLY DISPOSE EXISTING MACHINE ROOM DOOR AND FRAME, GC SHALL SUPPLY AND INSTALL NEW FIRE-RATED FRP DOOR AND FRAME TO MATCH EXISTING OPENING. FRP-DOOR BY SPECIAL-LITE (OR APPROVED EQUAL) SL-FR SERIES FIRE-RATED, PEBBLE GRAIN FACE SHEET, SS DOOR HARDWARE, SS CONTINUOUS DOOR HINGE, SS KICK PLATE. BTM DOOR LOUVER, CLOSER, WEATHER-STRIPPING, THRESHOLD, ETC.
- GC TO PATCH ALL PRE-CAST SHAFT WALL OPENINGS DUE TO REMOVED ELECTRICAL CONDUITS, UNUSED PENETRATIONS, MISC. HOLES, ETC. ALL SHAFT AND PIT WALLS.
- GC TO SUPPLY AND INSTALL METAL PLATE OVER EXISTING ABANDONED ELEVATOR HYDRAULIC CYLINDER OPENING AT BASE OF THE ELEVATOR PIT.
- GC SHALL REMOVE ALL OFFSETS, LEDGES OR PROJECTIONS WITHIN THE ELEVATOR HOISTWAY GREATER THAN 4"OR TAPER PROJECTION TO NOT LESS THAN 75 DEGREES. GC SHALL INSTALL NON-SHRINK GROUT CANT TAPER ALONG EXISTING FDN AND SHAFT WALL TRANSITION AT ELEVATOR #3
- NEW W10x19 STEEL BEAMS FOR ELEVATOR RAIL ATTACHMENTS. SEE DETAIL 1/A-4 FOR FURTHER INFORMATION. GC SHALL SUPPLY AND INSTALL (8) NEW CENTER BEAMS AT DUPLEX ELEVATORS #1 & #2 AND REMOVE AND REPLACE (3) RIGHT SIDE BEAMS AND SUPPLY AND INSTALL AN ADDITIONAL (5) RIGHT SIDE BEAMS AT SINGLE ELEVATOR #3.
- KONE SUPPLIED HOIST BEAM AND TUBE STEEL LIFELINE SUPPORT RAILS ANCHORED TO PRE-CAST SHAFT WALLS. SEE DETAIL 2/A-5 FOR FURTHER INFORMATION.
- GC SHALL PROVIDE CORE DRILL PENETRATIONS ((3)-1" DIA.) AND RECTANGULAR OPENING (12"x16") IN PRE-CAST MACHINE ROOM WALL FOR MC, AT SINGLE ELEVATOR #3 MACHINE ROOM.
- REMOVE AND LEGALLY DISPOSE EXISTING SUMP PUMP. GC SHALL SUPPLY AND INSTALL NEW SUMP PUMP TO MATCH EXISTING SIZE, HP, CONFIGURATION, ETC
- UPON COMPLETION OF ELEVATOR CAB BY KONE, GC SHALL SUPPLY AND INSTALL NEW CAB FLOORING, BY GERFLOR, GTI MAX OR APPROVED EQUAL.
- GC SHALL PAINT EXISTING PRE-CAST WALLS ALONG FRONT FACE OF ELEVATORS.
- GC SHALL COVER PORTION OF EXISTING SHAFT LOUVER AND PROVIDE DEFLECTOR ROOF CAP AT ELEVATOR #3.



ELEVATORS #1 & #2 : LEVEL 6

1/4"=1'-0"

SEQUENCE OF WORK

1. ELEVATOR #1 (DUPLEX)	CURRENTLY OUT-OF-SERVICE
2. ELEVATOR #2 (DUPLEX)	ELEVATOR #2 WORK SHALL ONLY BEGIN ONCE ELEVATOR #1 IS TURNED OVER FOR PUBLIC USE
3. ELEVATOR #3 (SINGLE)	ELEVATOR #3 WORK SHALL ONLY BEGIN ONCE ELEVATOR #2 IS TURNED OVER FOR PUBLIC USE

BID DRAWINGS

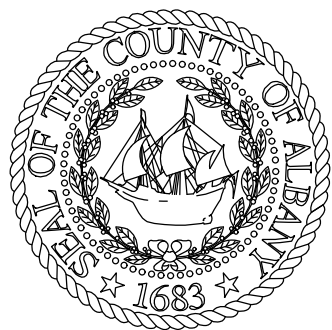
NOT FOR CONSTRUCTION

HALF SIZE

REPRODUCTIONS OF RECORD PLANS

REV. #	DATE	BY	REMARKS	REV. #	DATE	BY	REMARKS

WARNING : It is a violation of the New York State Education Law for any person, unless acting under the direction of a Licensed Professional Engineer, to alter in any way, any plans, specifications, plots or reports to which the seal of a Professional Engineer has been applied.



County of Albany  
Department of General Services  
Division of Facilities Engineering

112 STATE STREET • ALBANY, NEW YORK • 12207  
518-447-7210

TIMES UNION CENTER GARAGE ELEVATORS PROJECT  
GC TO ASSIST KONE ELEVATOR INSTALLATION  
ELEVATORS PLAN : LEVEL 6 & KEY NOTES

APPROVED BY:	MM	SCALE:	AS SHOWN
DESIGNED BY:	DA	DATE:	APRIL 2021
DRAWN BY:	DA	PROJ. I.D. NO.:	RFB# 2021-054

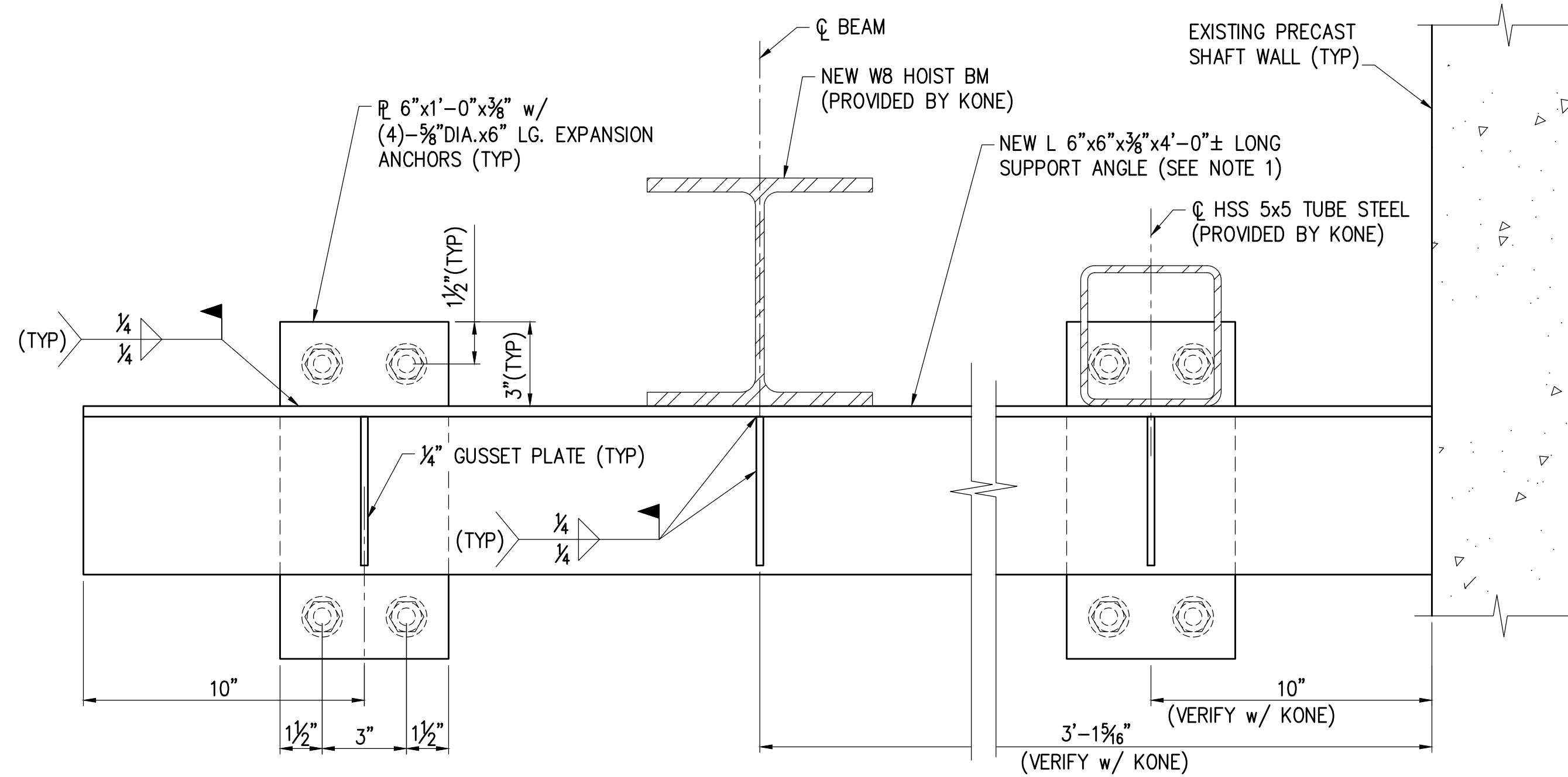
DRAWING NUMBER :

A3

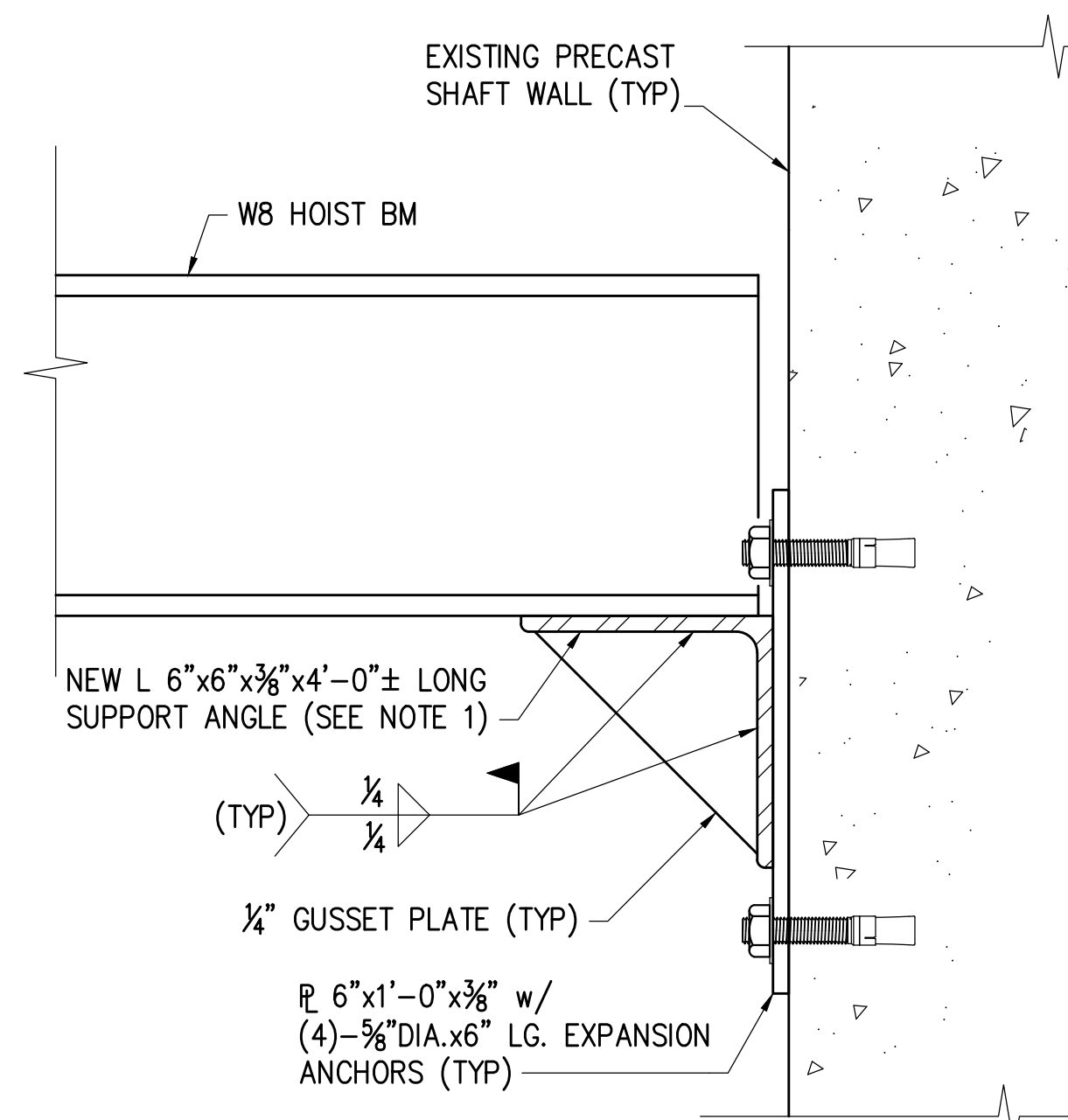


## A4

Albany County\_Facilities\_Engineering-C:\Users\jaddar~1\ALB\AppData\Local\Temp\Apublish\_26524\TUC\_Garage\_Elevator\_Renovation.dwg [Det\_Rol\_Beam\_A5] April 15, 2021 - 1:20pm addario



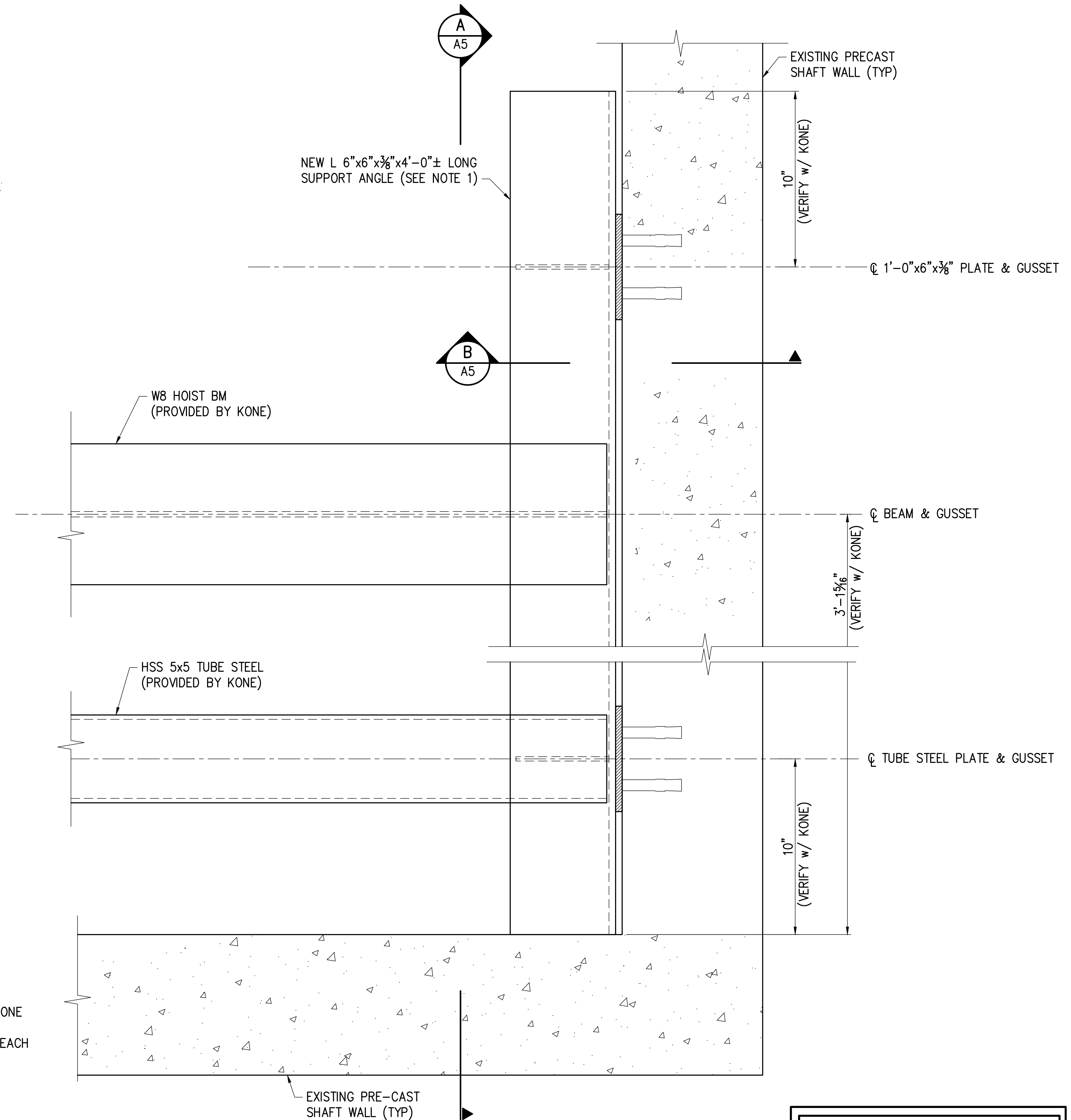
**AA**  
A5  
ELEVATION AT NEW HOIST BEAM & TUBE STEEL SUPPORT ANGLE  
3"=1'-0"



**BB**  
A5  
SECTION THRU NEW HOIST BEAM SUPPORT ANGLE  
3"=1'-0"

**NOTES :**

- GC SHALL COORDINATE LOCATION / HEIGHT OF L6x6" SUPPORT ANGLE w/ KONE
- NEW L6x6 SUPPORT ANGLE SECURED TO EACH PRE-CAST SHAFT WALL. (2) EACH AT ELEVATOR #1 & #2 AND (2) AT ELEVATOR #3 SHAFT WALLS



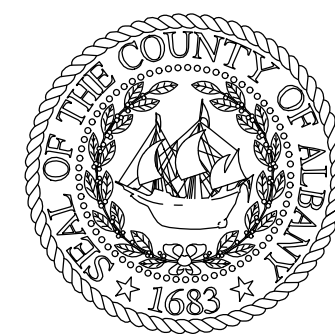
**2**  
A5  
PLAN VIEW: T/SHAFT HOIST BEAM & TUBE STEEL SUPPORT ANGLE  
3"=1'-0"

**BID DRAWINGS**  
NOT FOR CONSTRUCTION

**HALF SIZE**  
REPRODUCTIONS OF  
RECORD PLANS

REV. #	DATE	BY	REMARKS	REV. #	DATE	BY	REMARKS

**WARNING :** It is a violation of the New York State Education Law for any person, unless acting under the direction of a Licensed Professional Engineer, to alter in any way, any plans, specifications, plots or reports to which the seal of a Professional Engineer has been applied.



**County of Albany**  
**Department of General Services**  
**Division of Facilities Engineering**

112 STATE STREET • ALBANY, NEW YORK • 12207  
518-447-7210

TIMES UNION CENTER GARAGE ELEVATORS PROJECT GC TO ASSIST KONE ELEVATOR INSTALLATION HOIST BEAM & TUBE STEEL SUPPORT ANGLE DETAILS			
APPROVED BY:	MM	SCALE:	AS SHOWN
DESIGNED BY:	DA	DATE:	APRIL 2021
DRAWN BY:	DA	PROJ. I.D. NO.:	RFB# 2021-054

DRAWING NUMBER :  
**A5**