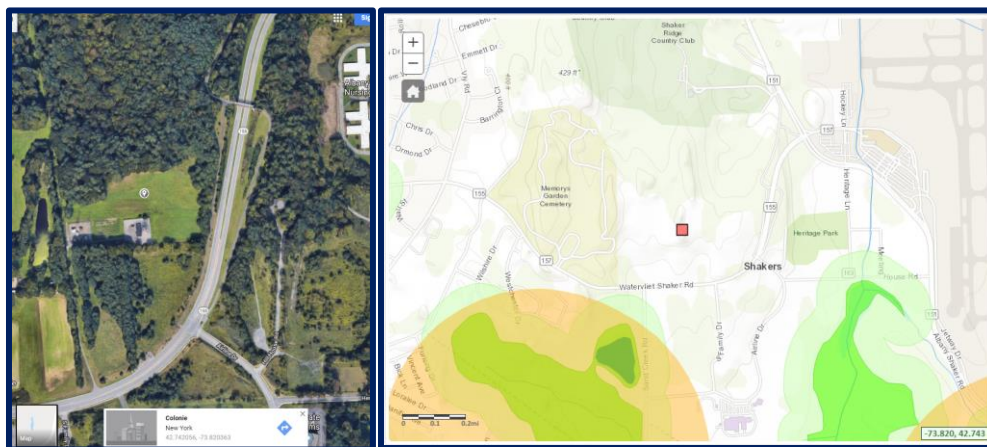


Radar Tower

Ground mounted array; 925 Watervliet Shaker Rd, Albany, NY 12211

This location will require tree clearing. The County may choose to remove or relocate the current trees at this location. Also, if desired by the County, the solar developer may remove the trees and do a 1-for-1 replacement or relocate the current trees. Note there are two prospective layouts. This is based on the currently available NYSERDA incentives. At this time systems under 750kW yield a higher incentive than a system over 750kW. However, a larger system yields higher production compensating for the lower incentive. It is recommended to provide both system footprints for vendors to provide a design and pricing. NYPA will evaluate the most economical value once pricing is received.



* Project location

*the photo on the right depicts the DEC wetland mapper

Proposed System Size 1.6MW DC (1.3MW AC)



Albany County Cornell Coop

Ground mount; 24 Martin Road, Voorheesville, NY 12156

Please see the environmental photo below, per the NYS DEC Environmental Resource Mapper, this location is within a wetland buffer zone. It is also within the vicinity of bats listed as endangered or threatened.

This location will require some tree clearing. The County may choose to remove or relocate the current trees at this location. Also, if desired by the County, the solar developer may remove the trees and do a 1-for-1 replacement or relocate the current trees.



*DEC Environmental Resource Mapper

Proposed System Size: 370 kW DC (310 kW AC)



200 kW DC (168 kW AC)



The photo below is of National Grid's hosting capacity map, the blue star represents the location of the solar array. At this time there is capacity to connect the solar arrays to National Grid's infrastructure. For this location there is ~960kW available at this time. Note, there is no 3V0 protection at this substation.

