

## Pedestrian Circulation

Asphalt walks are located near the Ministry Shop and along the east side of Meeting House Road, between the Meeting House and Ann Lee Pond. All of these walks are in poor condition with broken and uneven surfaces and with edges covered with weeds and grass...

Archival research indicates that the Shakers paved the walks on both sides of their quadrangle with quarried bluestone. No bluestone was found as part of this assessment....

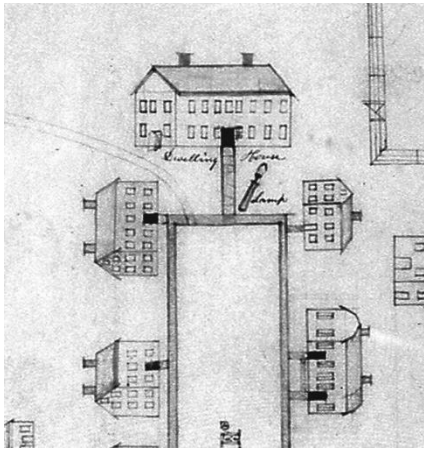
One crushed stone walk exists between Meeting House Road and the Ministry Shop. This walk is in poor condition owing to its uneven surface and weed infested edges.



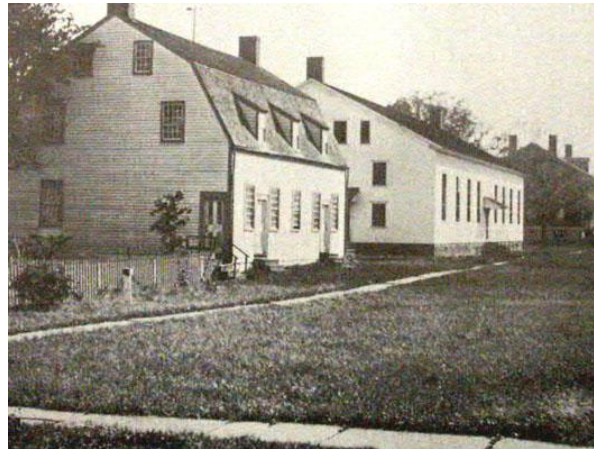
Asphalt walk leading to the Ministry Shop.



Asphalt walks at the Meeting House.



Henry C. Blinn's map, ca. 1842-1844 shows stone walks within the quadrangle of buildings. (*Emlen, p. 112.*)



Historic photograph showing walks surfaced with cut (*Filley, p. 59.*)



This crushed stone walk between the Meeting House and the Ministry Shop appears to be in alignment with the historic quadrangle stone paths.