



**MICHAEL S. MONTELEONE**  
EXECUTIVE UNDERSHERIFF

**SHAWN P. NOONAN**  
CHIEF DEPUTY

## **ALBANY COUNTY SHERIFF'S OFFICE**

County Court House Albany, New York 12207 (518) 487-5400  
[WWW.ALBANYCOUNTYSHERIFF.COM](http://WWW.ALBANYCOUNTYSHERIFF.COM)

**CRAIG D. APPLE, SR.**  
SHERIFF



**WILLIAM M. RICE**  
UNDERSHERIFF

**LEON A. BORMANN**  
CHIEF DEPUTY

May 25, 2021

Honorable Andrew Joyce  
Legislative Clerk's Office  
112 State Street, Room 710  
Albany, New York 12207

Dear Mr. Joyce:

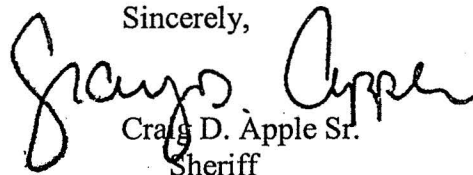
The attached correspondence is forwarded for presentation to the Albany County Legislature.

Legislative approval is requested to enter into an agreement with Motorola Solutions. The proposed agreement is to allow the Sheriff's Office to enter into a contract with Motorola Solutions to purchase equipment and installation, as outlined in their proposal dated May 4, 2021, at the new E-911 Dispatch Center located at 58 Verda Avenue, Clarksville, New York.

The cost of the equipment and installation as per the Motorola Solutions contract is \$1,500,000.00, which will be paid for by utilizing New York State Division of Homeland Security and Emergency Services, Office of Interoperable and Emergency Communications grant funds were awarded in 2018 and 2019.

Should there be any questions, do not hesitate to call.

Sincerely,

  
Craig D. Apple Sr.  
Sheriff

Att.

Cc: Hon. Daniel P. McCoy, County Executive  
Hon. William Clay, Public Safety Chairman  
Hon. Wanda Willingham, Audit & Finance Committee  
Brandon Russell, Esq., Majority Counsel  
Arnis Zilgme, Esq., Minority Counsel  
Christian Barnes, Minority Conference

**REQUEST FOR LEGISLATIVE ACTION**

FOR COUNSEL USE ONLY

DATE: \_\_\_\_\_  
RECEIVED: \_\_\_\_\_  
RECEIVED BY: \_\_\_\_\_  
METHOD: HAND \_\_\_\_\_  
COURIER \_\_\_\_\_  
MAIL \_\_\_\_\_

**DATE :** MAY 25, 2021

**DEPARTMENT:** ALBANY COUNTY SHERIFF'S OFFICE

CONTACT PERSON: SHERIFF CRAIG D APPLE SR

TELEPHONE: 518-447-5440

DEPT. REPRESENTATIVE ATTENDING SHERIFF CRAIG D APPLE SR

COMMITTEE MEETING: PUBLIC SAFETY

**PURPOSE OF REQUEST:**

ADOPTION OF LOCAL LAW

AMENDMENT OF PRIOR LEGISLATION

APPROVAL/ADOPTION OF PLAN/PROCEDURE

BOND APPROVAL

BUDGET AMENDMENT (SEE BELOW)

CONTRACT AUTHORIZATION (SEE BELOW)

ENVIRONMENTAL IMPACT

HOME RULE REQUEST

PROPERTY CONVEYANCE

OTHER: (STATE BRIEFLY IF NOT LISTED ABOVE)

THE SHERIFF'S OFFICE IS LOOKING TO PURCHASE EQUIPMENT TOTALING MORE THAN \$100,000  
AS PART OF OUR E-911 SYSTEM UPGRADE

**CONCERNING BUDGET AMENDMENTS**

**STATE THE FOLLOWING**

INCREASE ACCOUNT/LINE NO. \_\_\_\_\_

SOURCE OF FUNDS: \_\_\_\_\_

TITLE CHANGE: \_\_\_\_\_

**CONCERNING CONTRACT AUTHORIZATION,**

**STATE THE FOLLOWING:**

**TYPE OF CONTRACT**

CHANGE ORDER/CONTRACT AMENDMENT

PURCHASE (EQUIPMENT/ SUPPLIES)

LEASE (EQUIPMENT/SUPPLIES)

REQUIREMENTS

PROFESSIONAL SERVICES

EDUCATIONAL/TRAINING

GRANT: NEW

RENEWAL

SUBMISSION DEADLINE DATE

SETTLEMENT OF A CLAIM

RELEASE OF LIABILITY

OTHER: (STATE BRIEFLY)

**CONCERNING CONTRACT AUTHORIZATION (CONT'D)**

**STATE THE FOLLOWING:**

CONTRACT TERMS/CONDITIONS:

PARTY (NAME/ADDRESS):

MOTOROLA SOLUTIONS

123 TICE BLVD., SUITE 202

WOODCLIFF LAKE, NJ 07677

AMOUNT/RATE SCHEDULE/FEE:

\$1,500,000.00

TERM:

SCOPE OF SERVICES: THIS EQUIPMENT WILL BE PURCHASED AND INSTALLED  
AS PART OF OUR E-911 UPGRADE AND CONSTRUCTION PROJECT

CONTRACT FUNDING:

ANTICIPATED IN CURRENT BUDGET:

YES

X

NO

FUNDING SOURCE:

COUNTY BUDGET ACCOUNTS:

REVENUE:

APPROPRIATION:

GRANT FUNDING FROM NYS DIVISION OF HOMELAND SEC.

BOND(RES. NO. & DATE OF ADOPTION)

**CONCERNING ALL REQUESTS:**

MANDATED PROGRAM/SERVICE:

YES

NO

X

IF MANDATED CITE: AUTHORITY

ANTICIPATED IN CURRENT ADOPTED BUDGET:

YES

X

NO

IF YES, INDICATE REVENUE APPROPRIATION ACCOUNTS:

FISCAL IMPACT - FUNDING:

(DOLLARS OR PERCENTAGES)

FEDERAL

STATE

COUNTY

100%

TERM/LENGTH OF FUNDING

PREVIOUS REQUESTS FOR IDENTICAL OR SIMILAR ACTION:

RESOLUTION/LAW NUMBER:

18-417

DATE OF ADOPTION:

9/12/2018

JUSTIFICATION:

(STATE BRIEFLY WHY LEGISLATIVE ACTION IS REQUESTED)

LEGISLATIVE APPROVAL IS NEEDED FOR PURCHASES OF \$100,000 OR MORE.

THIS PURCHASE WILL BE PAID FOR WITH GRANT FUNDING THAT HAS ALREADY BEEN SECURED.

BACK-UP MATERIAL SUBMITTED

(I.E. APPLICATION/APPROVAL NOTICES FROM FUNDING SOURCE,

BID TABULATION SHEET, CIVIL SERVICE APPROVAL NOTICE, PROGRAM ANNOUNCEMENT, CONTRACTS

AND/OR ANY MATERIALS WHICH EXPLAIN OR SUPPORT THE REQUEST FOR LEGISLATIVE ACTION.)

SUBMITTED BY:

CRAIG D APPLE SR

TITLE:

SHERIFF



**MOTOROLA SOLUTIONS**

Motorola Solutions, Inc.  
123 Tice Boulevard, Suite 202  
Woodcliff Lake, NJ 07677

Telephone: +1 201.949.5500  
Fax: +1 201.949.5799

May 4, 2021

Albany County Sheriff's Office  
Attention: Kevin Demarest  
449 New Salem Road  
Voorheesville, NY 12186

Subject: Console Site Addition

Dear Kevin,

Motorola Solutions, Inc. ("Motorola Solutions") is pleased to have the opportunity to provide the Albany County Sheriff's Office with a proposal for a new console site. The Motorola project team has taken great care to propose a solution that will address your needs and provide unsurpassed value.

Motorola Solutions' offer is subject to the terms and conditions of the NYS OGS Contract # PT68722. This proposal shall remain valid for a period of one hundred twenty (120) days from the date of this cover letter. Albany County may accept this offer by delivering to Motorola Solutions a purchase order referencing NYS OGS Contract # PT68722 and this proposal. Alternatively, Motorola Solutions will be pleased to address any concerns Albany County may have regarding the proposal. Any questions can be directed to Kevin Ryan, Sr. Account Manager, at 518-817-1118.

We thank you for the opportunity to furnish Albany County with our communications solutions and we hope to strengthen our relationship by implementing this project. Our goal is to provide you with the best products and services available in the communications industry.

Sincerely,

Motorola Solutions, Inc.

A handwritten signature in black ink, appearing to read 'Roy Kirchner'.

Roy Kirchner  
MSSSI Vice President





# ALBANY COUNTY, NY

NEW DISPATCH CENTER

MAY 4TH, 2021

## MCC7500E CONSOLE ADD-ON

TRAN

The design, technical, pricing, and other information (information) furnished with this submission is proprietary and/or trade secret information of Motorola Solutions, Inc. (Motorola Solutions) and is submitted with the restriction that it is to be used for evaluation purposes only. To the fullest extent allowed by applicable law, the information is not to be disclosed publicly or in any manner to anyone other than those required to evaluate the information without the express written permission of Motorola Solutions.

MOTOROLA, MOTO, MOTOROLA SOLUTIONS, and the Stylized M Logo are trademarks or registered trademarks of Motorola Trademark Holdings, LLC and are used under license. All other trademarks are the property of their respective owners. © 2021 Motorola Solutions, Inc. All rights reserved.

# TABLE OF CONTENTS

MCC7500E Console Add-on .....	1
Section 1 .....	1-1
System Description .....	1-1
1.1 Console Site Add-On.....	1-1
1.1.1 Integration with the ASTRO 25 Network.....	1-1
1.2 Dispatch Console Solution Components .....	1-1
1.2.1 MCC 7500E Console Operator Position .....	1-1
1.3 APX® All-Band Console.....	1-3
1.4 MCD 5000 Deskset .....	1-4
1.5 Console System Components .....	1-5
1.6 System Diagram.....	1-5
1.7 Assumptions.....	1-6
Section 2 .....	2-7
Statement of Work.....	2-7
2.1 Overview .....	2-7
2.2 Assumptions.....	2-7
2.3 Motorola Responsibilities.....	2-8
2.4 Albany County Responsibilities .....	2-9
2.5 Preliminary Project Schedule .....	2-10
Section 3 .....	3-12
Warranty and Maintenance Plan .....	3-13
3.1 Motorola Integration Services .....	3-13
3.2 Motorola System Support.....	3-13
3.2.1 Technical Support.....	3-13
3.2.2 Infrastructure Repair.....	3-14
3.2.3 Onsite Infrastructure Response .....	3-14
3.2.4 Preventive Maintenance .....	3-14
3.2.5 Dispatch and Incident Management.....	3-14
3.3 Post Warranty Services.....	3-15
Section 4 .....	4-16
Pricing .....	4-16
4.1 Detailed Equipment List.....	4-16



SECTION 1

# SYSTEM DESCRIPTION

## 1.1 CONSOLE SITE ADD-ON

This proposal is in response to Albany County's request for sixteen (16) new MCC 7500E positions at the new dispatch center location tying into the core at ASTRO release 2020.1. Additionally, the proposal includes consolettes and desk sets for backup purposes. Motorola Solutions (hereinafter Motorola) has prepared this proposal document which includes the necessary hardware, software, and services to implement the sixteen (16) MCC7500E dispatch position site add-on within the Radio network (RNI). Motorola has included its design assumptions to aid in planning your site construction/modification.

### 1.1.1 Integration with the ASTRO 25 Network

The proposed dispatch console seamlessly integrates into Albany County's ASTRO 25 system without interface boxes, digital voice gateways, or backroom electronics for an integrated, mission-critical network. This tight union between radio infrastructure and console equipment has several operational benefits to the city of Albany.

The physical space to accommodate the proposed console is comparable to that required for a personal computer. The console can access both trunked talkgroups and conventional radio channels over the same network. This architecture reduces overall transport costs and the need for duplicate fixed network equipment.

## 1.2 DISPATCH CONSOLE SOLUTION COMPONENTS

The proposed components are connected together and to the rest of the ASTRO 25 system on an IP network through console site routers and switches. The console functions as an integrated component of the total radio system and fully participates in system-level features, such as end-to-end encryption and Agency Partitioning.

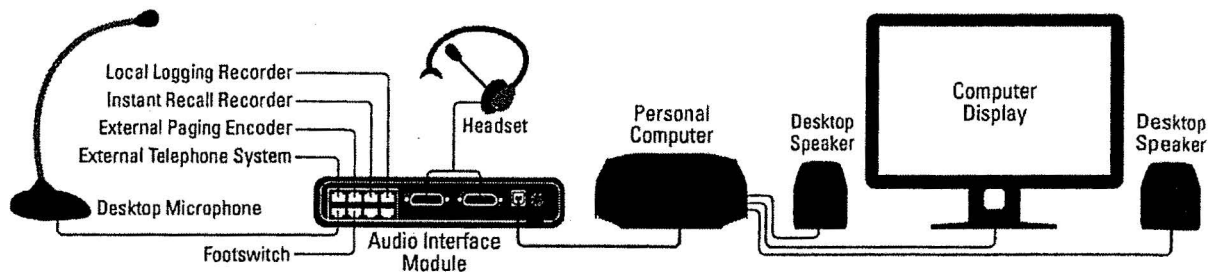
The console connects directly to the radio system's IP transport network without gateways or interface boxes. Audio processing, encryption, and switching intelligence for dispatch are performed within each software-based dispatch position without additional centralized electronics.

Since the network is IP-based, the system interfaces and components can be distributed physically throughout the network. Some of the available console components are identified below.

### 1.2.1 MCC 7500E Console Operator Position



## THE MCC 7500E DISPATCH CONSOLE



**Figure 1-1: Motorola MCC 7500E Dispatch Console Hardware Architecture**  
Diagram is for illustration purposes only – see section 1.2 for list of components

### Audio Interface Module (AIM)

The USB Audio Interface Module (AIM) acts as an interface between analog devices and the dispatch position and as a general purpose input/output module. The USB AIM supports audio routing between the dispatcher and Motorola Solutions standard peripherals. The USB AIM connects to the MCC 7500E dispatch position with a USB cable.

### Personal Computer (PC)

The personal computer included with the dispatch position is Windows-based and certified by Motorola Solutions.

### Computer Display

The dispatch position will use a 22" touch screen display.

### Desktop Speakers

Audio speakers have been included with each dispatch position and can be configured to transmit audio from a specific talkgroup or set of talkgroups. Each speaker is a self-contained unit, with individual volume controls, and can be placed on a desktop or mounted on a rack or computer display.

The two (2) speakers per operator position intended for Select and Unselect are included. For Instant Recall Audio additional speakers have been provided.

### Headset Jack

The dispatch position supports up to two headset jacks, both push-to-talk (PTT) and non-PTT-enabled, for simultaneous use by the dispatcher and a supervisor. The headset jack contains two volume controls for the separate adjustment of received radio and telephone audio.



The proposal includes one (1) headset jack per operator position.

### Gooseneck Microphone

The microphone controls the dispatch position's general transmit and monitor features through two buttons on its base. The microphone can be fastened down or left loose. It can be used alone or in conjunction with a headset.

One (1) gooseneck microphone has been provided per operator position

### Footswitch

Each dispatch position includes a dual pedal footswitch that controls general transmit and monitor functions.

One (1) dual pedal footswitch has been provided per operator position

### GCP 8000 Conventional Site Controller

The GCP 8000 Conventional Site Controller supports site conventional operation where a Conventional Channel Gateway (CCGW) is located at a dispatch console site. If the link between the console site and the master site is lost, the GCP 8000 enables dispatchers to communicate over conventional resources.

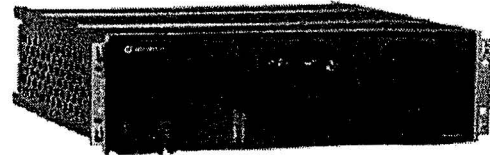


Figure 1-2: GCP 8000 Site Controller

One (1) GCP 8000 has been provided at the new dispatch site

## 1.3 APX® ALL-BAND CONSOLETTTE

The APX All-Band Consolette provides a low-cost, mid-power wireless dispatch solution as an ideal complement to a modern P25 dispatch center. Equipped with leading edge P25 Phase 2 TDMA technology and multi-band interoperability, the APX All-Band Consolette can also be used as an emergency backup station when infrastructure is offline, or for wireless access to different system types for increased interoperability between agencies.

The APX All-Band Consolette's P25 operation and compatibility with legacy systems ensures that communications are clear, continuous, and coordinated across multiple users, agencies, and systems. The durable robust metal housing provides durability and allows for easy servicing, while the integrated front panel numeric keypad allows fast access to radio controls. In addition, optional features and benefits of the APX All-Band Consolette include:

- **Optional Multi-Band Operation in One Radio** – The APX All-Band Consolette delivers the convenience of three radios in one while maintaining APCO TIA receiver specifications. With the APX All-Band, personnel can use one consolette to communicate and provide dispatch operations across multiple digital and analog networks that operate in any three of the following frequency bands: 700 MHz, 800 MHz, VHF, and UHF (R1/R2).

- **Meets Radio Users' Needs** – The APX All-Band Console is compatible with the following optional advanced features and data applications: Programming over Project 25 (POP25), Text Messaging, Over the Air Rekeying (OTAR), and Enhanced Encryption Software Options. It is also capable of Extended Dispatch Operation including: Emergency Alarm ACK Encode, Radio Inhibit/ Uninhibit Encode, Radio Monitor Encode, Radio Check Encode, Status Query Encode, Status Query Response Decode, Status Update Decode, and Message Update Decode.

Twelve (12) APX Console units configured for 800MHz have been provided to be rack mounted in the equipment room.

Four (4) APX Console units configured for all band operation have also been provided and these will be placed in the dispatch room.

## 1.4 MCD 5000 DESKSET

The MCD 5000 Deskset System is Motorola Solutions next generation radio dispatch Deskset platform that interface to legacy Motorola radios, including the XTL5000 Console (W9) and functions with Motorola radios such as the APX 7500 Console. The design of the MCD 5000 is a complete refresh of the Deskset platform and uses VoIP (Voice over IP) technology.

The MCD 5000 Deskset System is directed at the low tier radio dispatch deskset market for customers (Federal, State & Local, Commercial) that utilize radio dispatch Desksets to interface to Motorola Console units either controlling conventional radio channels directly from the Deskset or support a wireless console interface on trunking radio systems. In addition, the MCD 5000 Deskset System is targeted at those customers that utilize radio dispatch Desksets that have a direct connection to 2 or 4 wire Tone Remote Control (TRC) devices (stations, DIUs, Tone Remote Adapters).



The MCD 5000 Deskset System solution uses a new or existing IP network allowing remote control of a 2-way radio located elsewhere on the network. Each MCD 5000 Deskset user can dynamically select a radio to control and have a range of capability from simple talk/listen thru complete radio feature access. The 2-way radio connects to the IP network thru a MCD 5000 Radio Gateway Unit (RGU) that allows from 1 to 4 radios to be connected to a single MCD 5000 RGU.

Using IP to connect the MCD 5000 Deskset to the MCD 5000 RGU / 2-way radio is very appealing to customers as it saves time and money, with the added benefit of flexibility. The MCD 5000 Deskset provides the operator/user with several analog audio accessories (handset, headset, desktop paddle microphone, and footswitch) to choose from to get the desired audio into the deskset. The voice



received by the MCD 5000 Deskset is converted to VoIP packet data and sent over the IP network to the selected MCD 5000 RGU. The MCD 5000 Deskset also provides virtual control head capability for display updates and button presses.

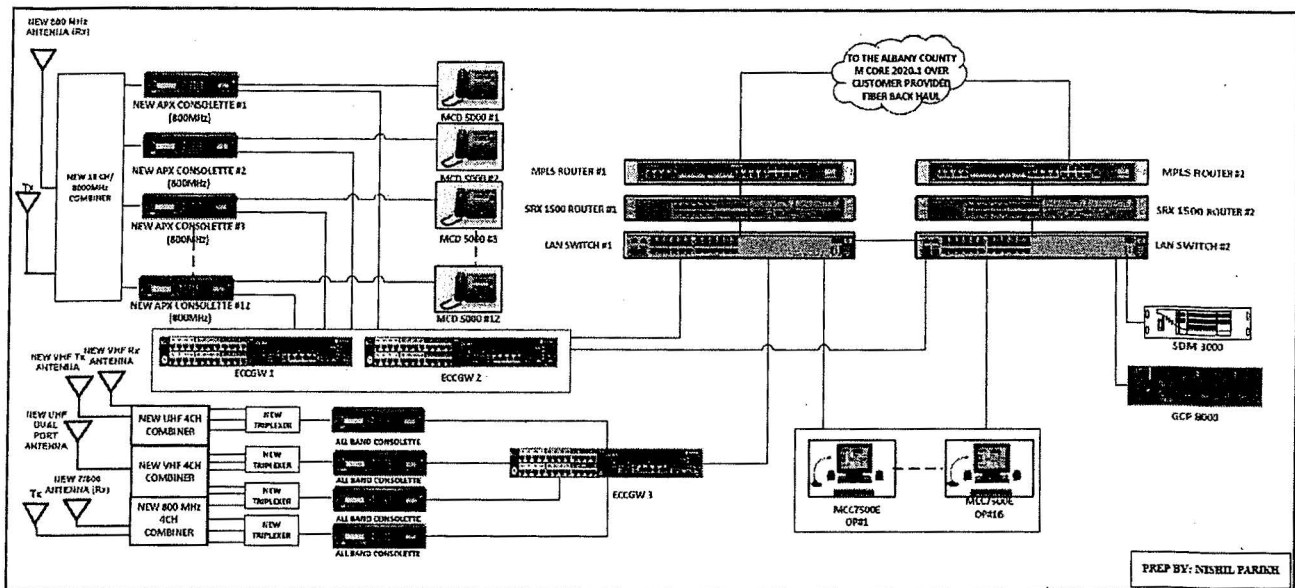
Twelve (12) MCD 5000 desksets have been provided as part of the proposal and these will be connected to the proposed 800MHz consolettes.

## 1.5 CONSOLE SYSTEM COMPONENTS

Our proposed dispatch site solution for Albany includes the following summary of equipment:

- Master Site Licenses for the proposed Consoles
- Edge Router Pair for the Master Site
- One new dispatch site with:
  - Two (2) Site LAN Switches
  - Two (2) SRX 1500 Site Routers
  - Two (2) Nokia SAR-8 MPLS Routers
  - Three (3) High Density Enhanced Conventional GateWay (HD eCCGW) Units
  - One (1) Conventional Site Controller
  - One (1) SDM 3000 AUX I/O Box
  - Twelve (12) MCD 5000 Desksets
  - Twelve (12) 800MHz APX Consolettes
  - Four (4) All-Band Consolettes
  - One (1) 16 CH 800Mhz combiner
  - One (1) UHF Combiner
  - One (1) VHF Combiner
  - One (1) 800 MHz Combiner
  - Three (3) 7.5' open racks
  - Antenna Systems for the proposed Consolettes
- Sixteen (16) Motorola MCC7500E-based dispatch console operator position, each with:
  - One (1) 22" Touch Monitor.
  - One (1) MCC7500E Operator PC.
  - One (1) Audio Interface Module (AIM)
  - Two (2) USB Desktop Speakers.
  - One (1) Gooseneck Mic.
  - Two (2) Headset jacks.
  - One (1) Footswitch
  - One (1) USB Hub.
  - One Hundred Sixty (160) Resources license
  - Secure Operation License with Encryption
  - Enhanced IRR with two (2) speakers

## 1.6 SYSTEM DIAGRAM



## 1.7 ASSUMPTIONS

- Customer is responsible for the Electrical and power storage units. Motorola Solutions has provided PDUs for customer provided UPS
- Customer is responsible for the required fiber backhaul from master site to new dispatch site
- Customer is responsible for the logging recorder. Existing AIS is to be used for logging recorder. No new AIS and/or logger upgrade is included with this proposal.
- Motorola Solutions has assumed that the dispatch location has space for antenna installation
- Proposed Combiners and Triplexers for All band APX consolettes will be installed in the backroom.
- APX Consolettes for 800MHz will be installed in the rack located in the back room
- All installation will be taking place at the customer location
- Motorola Solutions has assumed that indoor space for equipment is sufficient enough to set up three (3) 7.5' open racks
- Motorola Solutions has assumed that all the indoor space will be climate controlled.
- VHF Yagi antenna has been provided. Motorola Solutions assumes that there will be enough space to maintain vertical isolation.





SECTION 2

# STATEMENT OF WORK

## 2.1 OVERVIEW

This Statement of Work (SOW) describes the deliverables to be furnished to the Albany County (hereinafter the County). The tasks described herein will be performed by Motorola, its subcontractors, and the County to implement the solution described in the System Description. It describes the actual work involved in installation, identifies the installation standards to be followed, and clarifies the responsibilities for both Motorola and the County during the project implementation. Specifically, this SOW provides:

- A description of the responsibilities for both Motorola and the County.
- The assumptions taken into consideration during the development of this project.

This SOW provides the most current understanding of the work required by both parties to ensure a successful project implementation. In particular, Motorola has made assumptions of the sites to be used for the new system. Should any of the sites change, a revision to the SOW and associated pricing will be required. It is understood that this SOW is a working document, and that it will be revised as needed to incorporate any changes associated with contract negotiations, and any other change orders that may occur during the execution of the project.

In summary, this SOW is to implement the system as described in the system description.

## 2.2 ASSUMPTIONS

Motorola has based the system design on information provided by the County and an analysis of their system requirements. All assumptions have been listed below for review. Should Motorola's assumptions be deemed incorrect or not agreeable to the County, a revised proposal with the necessary changes and adjusted costs may be required. Changes to the equipment or scope of the project after contract may require a change order

- 911 phone system is not included in this proposal.
- Logging Recorder system and/or upgrade is not included in this proposal.
- All work is to be performed during normal work hours, Monday through Friday 8am – 4pm.
- Furniture for new consoles is not included in this proposal
- Any required system interconnections not specifically outlined here will be provided by the County. These may include dedicated Fiber, microwave links, or other types of connectivity.
- Any site/location upgrades or modifications are the responsibility of the County.
- Proposal assumes that sufficient space is available for the proposed antennas.
- Proposal assumes that site backup power such as a building UPS is available and has enough capacity to support the proposed equipment.



- Proposal assumes that there is enough space in the equipment room to accommodate the proposed three (3) 7.5' racks.
- New dispatch site will be fully R56 compliant prior to arrival of Motorola and its subcontractors.
- Installation is assumed to be based on existing system release and any system upgrades is not quoted with this proposal.
- Should any of the sites or design change, a revision to the SOW and associated pricing will be required.
- Note: MCC7500E and MCC7500 cannot be collocated in the same dispatch room.

## 2.3 MOTOROLA RESPONSIBILITIES

Motorola's general responsibilities include the following:

- Conduct project kickoff meeting with the County to review project design and finalize requirements.
- Perform the installation of supplied equipment described in the System Description and summarized below:
  - Install (16) MCC7500E operator position with accessories per the equipment list on existing furniture at the dispatch center location.
  - Install and Optimize twelve (12) 800MHz APX Consolettes along with a Control Station Combiner, One Tx Antenna and One Rx Antenna.
  - Install and Optimize four (4) All Band APX Consolettes along with a VHF Control Station Combiner, UHF Control Station Combiner and 800 Control Station Combiner. Install one (1) Dual Port VHF Antenna, one (1) Dual Port UHF Antenna, one (1) 800MHz Tx Antenna and one (1) 800 MHz Rx Antenna.
  - Install three (3) Enhanced Conventional Channel GateWay units and proposed sixteen (16) Consolettes to them.
  - Install twelve (12) MCD 5000 Desksets, one each connected to the proposed twelve (12) 800 MHz Consolettes. The desksets will be located in the dispatch room and the consolettes will be rack mounted in the equipment room.
  - Provide and run CAT6 cable(s) per operator to LAN Switch from the equipment room to dispatch floor (maximum of 300ft per run quoted) within the facility.
  - Configure the console folders based on the existing console position layout.
- Schedule the implementation in agreement with the County.
- Define electrical requirements for equipment to be installed in the County-provided facilities.
- Define heat load for equipment to be installed in the County-provided facilities.
- Connect the County-supplied, previously identified AC outlet into the console, to a demarcation point located within 5 feet of the dispatch position.
- Connect the appropriate equipment to the County-supplied ground system in accordance with Motorola's R56 Site Installation Standards.
- Perform one-time console programming, based on the existing console layout.
- Coordinate the activities of all Motorola subcontractors under this contract.
- Administer safe work procedures for installation.
- Provide the County with the appropriate system interconnect specifications.
- Optimization and testing with the County to confirm operation using existing configurations.



- If any major task as contractually described fails, repeat that particular task after Motorola determines that corrective action has been taken.
- Document all issues that arise during testing.
- Document the results of the acceptance tests and present to the County for review.
- Resolve any punchlist items before project completion.

## 2.4 ALBANY COUNTY RESPONSIBILITIES

The County will assume responsibility for the installation and performance of all other equipment and work necessary for completion of this project that is not provided by Motorola. The County general responsibilities include the following:

- Assign a Project Manager, as the single point of contact responsible for the County-signed approvals.
- Assign other resources necessary to ensure completion of project tasks for which the County is responsible. Coordinate the activities of all the County vendors or other contractors.
- Provide Motorola with approved console template.
- Provide Unit IDs or aliases for new operator positions.
- Provide furniture, desk space and rack floor space for the console equipment at the County- provided facilities.
- Ensure that the existing Master Site switch has available ports to connect the new console site.
- Ensure communications site(s) meet space, grounding, power, and connectivity requirements for the installation of all equipment.
- Approved Local, State, or Federal permits as may be required for the installation and operation of the proposed equipment are the responsibility of the County.
- Obtain all licensing, site access, or permitting required for project implementation as required.
- Existing equipment room and Dispatch Floor (including Furniture) will meet Motorola's "Standards and Guidelines for Communication Sites" (R56).
- Supply adequately sized electrical service, backup power (UPS, generator, batteries, etc.) including the installation of conduit, circuit breakers, outlets, etc., at each equipment location at the top of the rack. Provide AC power (dedicated 20 Amp AC outlets-simplex with ground) for each major piece of equipment within 6 feet of the location of the Motorola-supplied equipment, including the associated electrical service and wiring (conduit, circuit breakers, etc.).
- Provide adequate HVAC, grounding, lighting, cable routing, cable trays and surge protection (also, among existing and Motorola-provided equipment) based upon Motorola's "Standards and Guidelines for Communication Sites" (R56).
- Provide a grounding system to Motorola's "Standards and Guidelines for Communication Sites" (R56) and supply a single point system ground, of 5 ohms or less, to be used on all FNE supplied under the Contract. Supply grounding tie point within 10 feet from the Motorola-supplied equipment within the facility which includes the dispatch floor (for each dispatch position) as well as the equipment room.
- Provide free and open access to all owned or leased sites of work. This includes but is not limited to, the following:
  - Provide escort at no charge, if escorts are required at any particular site. The availability of such escort shall not be unreasonably withheld.

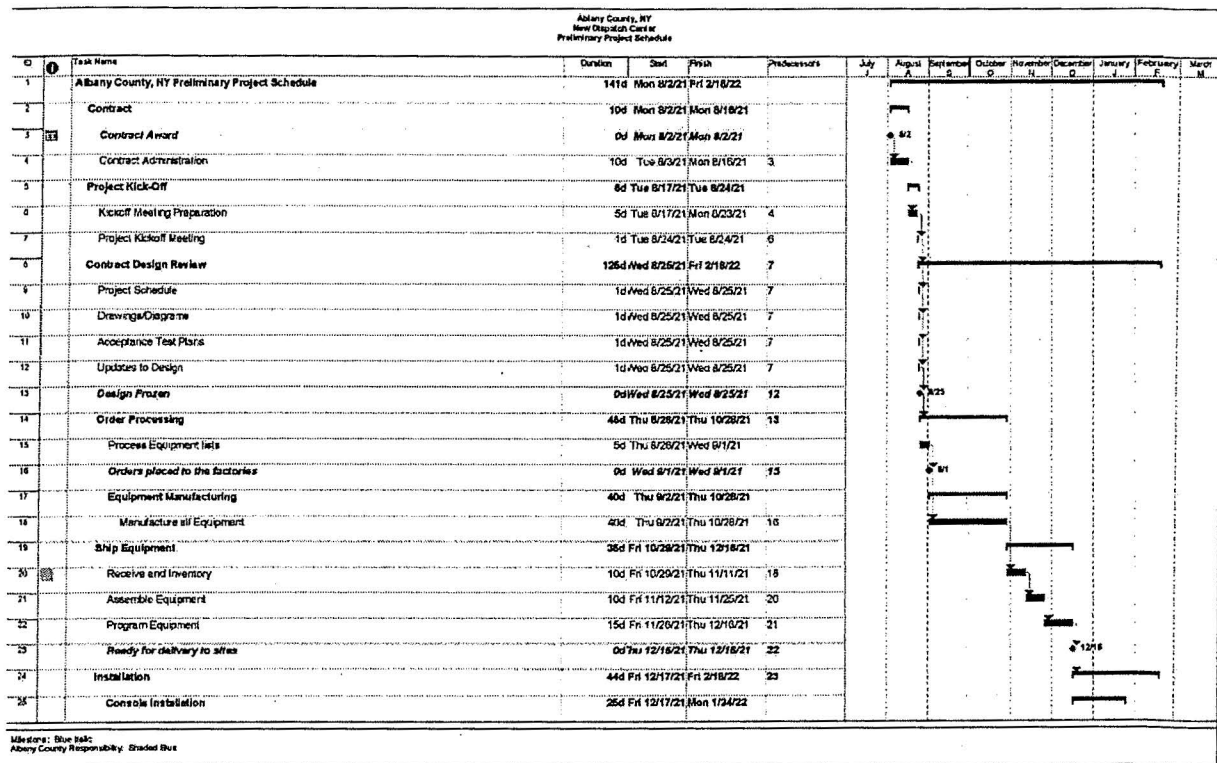


- Arrange site permission; provide keys to all the locks at sites and/or temporary identification cards should be issued to Motorola personnel if required for access to the sites.
- Provide site access to all sites for Motorola personnel and Motorola's subcontractors for the purpose of installing and optimizing Motorola-provided equipment, and for testing of the equipment and system operation.
- Provide any required parking permits to Motorola personnel for restricted access entry and/or parking.
- Resolve any environmental issues including, but not limited to, asbestos, structural integrity (rooftop, water tank, tower, etc.) of the site, and any other building risks. (Resolve environmental or hazardous material issues).
- Provide clear cable path access from the dispatch position to the backroom equipment LAN Switch to run Ethernet cables. If required, core drill the walls, install new cable trays etc.
- Provide furniture for the new consoles at the dispatch center that are grounded per Motorola's "Standards and Guidelines for Communication Sites" (R56).
- Complete all the County deliverables in accordance within the approved Project Schedule.

## 2.5 PRELIMINARY PROJECT SCHEDULE

A high level Schedule is provided below. The project will take approximately six months. A detailed schedule will be developed based on final scope and submit to Albany County during the CDR phase of the Project.





Albany County, NY New Dispatch Center Preliminary Project Schedule										July	August	September	October	November	December	January	February	March
ID	Task Name	Duration	Start	Finish	Predecessors													
24	Install Consoles	15d	Fri 12/17/21	Fri 1/7/22														
27	Install Consoles and MCO Desks	10d	Mon 1/10/22	Mon 1/24/22	25													
28	Console Installation Complete	0d	Mon 1/24/22	Mon 1/24/22	27,28													
29	Installation Acceptance	0d	Mon 1/24/22	Mon 1/24/22	28													
30	System Optimization	3d	Tue 1/25/22	Thu 1/27/22														
31	Link Verification	1d	Tue 1/25/22	Tue 1/25/22	28													
32	Program and Optimize System	2d	Wed 1/26/22	Thu 1/27/22	31,25,28													
33	Optimization Complete	0d	Thu 1/27/22	Thu 1/27/22	32													
34	Audit and Acceptance Testing	11d	Fri 1/28/22	Fri 2/11/22														
35	R-56 Audit	6d	Fri 1/28/22	Fri 2/4/22														
36	Perform R-56 Audit	1d	Fri 1/28/22	Fri 1/28/22	28,33													
37	Document Results	3d	Mon 1/31/22	Wed 2/2/22	36													
38	Perform R-56 Punch list Resolution	2d	Thu 2/3/22	Fri 2/4/22	37													
39	R-56 Audit Complete	0d	Fri 2/4/22	Fri 2/4/22	38													
40	Functional Testing	6d	Fri 2/4/22	Fri 2/11/22														
41	Perform System ATP	3d	Fri 2/4/22	Tue 2/8/22	33FS+5d													
42	Document Test Results	3d	Wed 2/9/22	Fri 2/11/22	41													
43	Functional Testing Acceptance	0d	Fri 2/11/22	Fri 2/11/22	42													
44	SATP Acceptance	0d	Fri 2/11/22	Fri 2/11/22	43													
45	Finalize	44d	Fri 12/17/21	Fri 2/18/22														
46	Punchlist Resolution	5d	Mon 2/14/22	Fri 2/18/22	44													
47	Finalize Documentation	5d	Mon 2/14/22	Fri 2/18/22	44													
48	Transition to Service/PTC	2d	Fri 12/17/21	Mon 12/20/21														
49	Final Acceptance	0d	Fri 2/18/22	Fri 2/18/22	44,45,47,46,39													

Milestone: Blue task  
 Albany County Responsibility: Shaded Blue

### SECTION 3

Use or disclosure of this proposal is subject to the restrictions on the cover page.

New Dispatch Center



# WARRANTY AND MAINTENANCE PLAN

## 3.1 MOTOROLA INTEGRATION SERVICES

To ensure a smooth system installation and deployment, our solution for Albany County includes the following services:

- Project Management.
- Field Engineering.
- System installation and optimization.

This solution will be installed, optimized, and tested by our dedicated Project Implementation Team.

## 3.2 MOTOROLA SYSTEM SUPPORT

To maintain the County's equipment, Motorola offers our standard commercial warranty as set forth in the Communications System Agreement.

In addition to the standard warranty, Motorola is including customized services during the warranty, as summarized in the table. Upon request, Motorola will provide detailed statements of work that fully describe these proposed services.

A description of the proposed services is included in this section.

Service Description	Additional Above Warranty
Technical Support	Included
Infrastructure Repair	Included
Onsite Infrastructure Response	Included
Preventive Maintenance	Included
Dispatch and Incident Management	Included

### 3.2.1 Technical Support

Technical support provides centralized remote telephone support for technical issues through the experienced system technologists at Motorola's Solutions Support Center (SSC). Once the County personnel call for support, a support case will be opened and logged. The SSC technologists will use their experience, a consolidated solutions database, in-house test labs, and development engineers to ensure the rapid resolution of the issue. Incident management and escalation procedures are in place to ensure that contracted response and restore times are met. Since each incident is monitored and recorded, the resulting metrics can be analyzed to ensure ongoing system performance.



### **3.2.2 Infrastructure Repair**

Infrastructure Repair service provides for the repair of all Motorola-manufactured equipment, as well as equipment from third-party infrastructure vendors. All repair management is handled through a central location eliminating your need to send equipment to multiple locations.

Comprehensive test labs replicate your network in order to reproduce and analyze the issue. State-of-the-art, industry-standard repair tools enable our technicians to troubleshoot, analyze, test, and repair your equipment. Our ISO9001 and TL9000-certified processes and methodologies ensure that your equipment is quickly returned maintaining the highest quality standards.

Response and repair excludes third party equipment not shipped by Motorola.

### **3.2.3 Onsite Infrastructure Response**

Onsite Infrastructure Response provides local qualified technicians who arrive at your location to diagnose and restore the system. Following proven response and restore processes, Motorola's Call Center contacts the local authorized service center in the County area and dispatches a qualified technician.

Our case management and escalation process ensures that arrival of the technician on-site and system restoration comply with contracted response times. If the technician is unable to resolve the issue on site, the case is escalated to the Solutions Support Center (SSC) or product engineering teams for support as needed.

### **3.2.4 Preventive Maintenance**

During Preventive Maintenance, Motorola-certified field technicians will inspect the County equipment on a routine basis to ensure that the equipment continues to meet original manufacturer's specifications. If a situation warrants it, technicians will be dispatched to perform hands-on examinations and diagnostics. This service will help to detect potential problems before they develop, maximizing equipment performance, reducing the possibility of failures, and prolonging equipment life.

### **3.2.5 Dispatch and Incident Management**

Dispatch ensures that local, trained and qualified technicians will arrive at the customer's location to diagnose and restore their communications network. When a notification occurs from an automatic alarm or through a scheduled maintenance notification, Motorola's Call Center assigns a number to the incident and triages the issue with the appropriate support team. The Call Center oversees all aspects of the event and incident management process during repair and restoration, tracking open issues to ensure that they are managed to resolution within the required time frame. This continuous oversight provides a record of events associated with each case that can be presented in the form of incident activity reports. This incident management system can also be accessed remotely via Motorola Online portal.





### 3.3 POST WARRANTY SERVICES

As Motorola's continuing commitment to supporting your system, warranty services can be extended after the warranty period to provide maintenance and service support in future years. Any of the services that we identify can be customized in future years, and are available for purchase either in "System Support Services" packages or as individual service offerings. These system support services significantly benefit Albany County because the system can be effectively supported after the warranty period, thereby maximizing the operational capabilities and useful life of the system and protecting your investment in the system.

Post warranty services and Lifecycle services have not been quoted with this proposal.

SECTION 4

# PRICING

	LIST	OGS
Equipment	\$1,328,692.00	\$1,053,427.25
System Integration	\$610,707.00	\$610,707.00
Subtotal	\$1,939,399.00	\$1,664,134.25
System Discount		-\$164,134.25
Total Sale Price		<b>\$1,500,000.00</b>

## 4.1 DETAILED EQUIPMENT LIST

QTY	NOMENCLATURE	DESCRIPTION
1	SQM01SUM0323	ASTRO MASTER SITE
1	CA03517AB	ADD: CORE EXPANSION
2	CA01316AA	ADD: UNC ADDTL DEVICE LIC (QTY 10)
4	UA00156AA	ADD: MCC7500 CONSOLE LICENSES (QTY 5)
1	CA03509AA	ADD: EDGE ROUTER PAIR
2	T8493	EDGE & HUB ROUTER & FIREWALL - AC
2	CA03445AA	ADD: MISSION CRITICAL HARDENING
2	CA03448AA	ADD: STATEFUL FIREWALL
2	CLN1868	2930F 24-PORT SWITCH
2	CLN1866	FRU: 1M DAC CABLE
1	F4543	SITE MANAGER BASIC
1	VA00874	ADD: AUX I-O SERV FW CURR ASTRO REL
3	V592	AAD TERM BLCK & CONN WI
1	V266	ADD: 90VAC TO 260VAC PS TO SM
1	DSMW3HE06791AA	SAR-8 SHELF V2
2	DSMW3HE02774AB	CONTROL SWITCH MODULE V2 (CSMV2) 48V
1	DSMW3HE02784MA	SAR RELEASE 9.0 BASIC OS LICENSE

Use or disclosure of this proposal is subject to the restrictions on the cover page.

New Dispatch Center



1	DSMW3HE06792AA	IPD FAN MODULE FOR SAR-8 SHELF V2 EXT. TEMP (-48VDC)
2	DSMW3HE11473AK	PMC CARD W/ 4 GIG-E SFP BUNDLE (1) 3HE02782AA PMC, (4) SHE11904AA SFP
4	DSMW3HE00028CA	SFP - GIGE LX - LC ROHS 6/6 DDM -40/85C
2	DSMW3HE05838AA	250W 120/240V AC POWER CONVERTER
1	DSMW3HE06791AA	SAR-8 SHELF V2
2	DSMW3HE02774AB	CONTROL SWITCH MODULE V2 (CSMV2) 48V
1	DSMW3HE02784MA	SAR RELEASE 9.0 BASIC OS LICENSE
1	DSMW3HE06792AA	IPD FAN MODULE FOR SAR-8 SHELF V2 EXT. TEMP (-48VDC)
2	DSMW3HE11473AK	PMC CARD W/ 4 GIG-E SFP BUNDLE (1) 3HE02782AA PMC, (4) SHE11904AA SFP
4	DSMW3HE00028CA	SFP - GIGE LX - LC ROHS 6/6 DDM -40/85C
2	DSMW3HE05838AA	250W 120/240V AC POWER CONVERTER
1	B1949	MCC 7500E SOFTWARE DVD
1	B1948	MCC 7500E DISPATCH POSITION LICENSES
4	UA00652AA	ADD: 160 RADIO RESOURCES LICENSE
4	UA00653AA	ADD: BASIC CONSOLE OPERATION
4	UA00654AA	ADD: ASTRO 25 TRUNKING OPERATION
4	UA00655AA	ADD: ADVANCED CONVENTIONAL OPERATION
4	UA00658AA	ADD: SECURE OPERATION
4	UA00659AA	ADD: ADP/AES/DES-OFB ENCRYPTION
4	UA00661AA	ADD: ENHANCED IRR
4	DSLOGITECHZ130	LOGITECH Z130 SPEAKERS
4	B1941	USB AUDIO INTERFACE MODULE
4	TT3903A	Z2 G5 MINI WORKSTATION NON RETURNABLE
4	DSEV221B	TECH GLOBAL EVOLUTION SERIES 22INCH WITH TOUCH
4	DSST7300U3M	STARTECH 7 PORT USB 3.0 HUB
8	B1952	SPEAKER, DESKTOP, USB
8	CA03405AA	ADD: POWER SUPPLY WITH DC CORD
8	CA03406AA	ADD: AC LINE CORD, NORTH AMERICA
8	CA03413AA	ADD: USB CABLE, TYPE A TO TYPE C, 4.5M
4	B1914	MCC SERIES DESKTOP GOOSENECK MICROPHONE
4	B1913	MCC SERIES HEADSET JACK
4	DSTWIN6328A	PROVIDES ONE DUAL PEDAL FOOTSWITCH
4	T7885	MCAFFEE WINDOWS AV CLIENT
4	T7449	WINDOWS SUPPLEMENTAL TRANS CONFIG
1	B1949	MCC 7500E SOFTWARE DVD
1	B1948	MCC 7500E DISPATCH POSITION LICENSES
4	UA00652AA	ADD: 160 RADIO RESOURCES LICENSE
4	UA00653AA	ADD: BASIC CONSOLE OPERATION
4	UA00654AA	ADD: ASTRO 25 TRUNKING OPERATION
4	UA00655AA	ADD: ADVANCED CONVENTIONAL OPERATION
4	UA00658AA	ADD: SECURE OPERATION
4	UA00659AA	ADD: ADP/AES/DES-OFB ENCRYPTION
4	UA00661AA	ADD: ENHANCED IRR

4	DSLOGITECHZ130	LOGITECH Z130 SPEAKERS
4	B1941	USB AUDIO INTERFACE MODULE
4	TT3903A	Z2 G5 MINI WORKSTATION NON RETURNABLE
4	DSEV221B	TECH GLOBAL EVOLUTION SERIES 22INCH WITH TOUCH
4	DSST7300U3M	STARTECH 7 PORT USB 3.0 HUB
8	B1952	SPEAKER, DESKTOP, USB
8	CA03405AA	ADD: POWER SUPPLY WITH DC CORD
8	CA03406AA	ADD: AC LINE CORD, NORTH AMERICA
8	CA03413AA	ADD: USB CABLE, TYPE A TO TYPE C, 4.5M
4	B1914	MCC SERIES DESKTOP GOOSENECK MICROPHONE
4	B1913	MCC SERIES HEADSET JACK
4	DSTWIN6328A	PROVIDES ONE DUAL PEDAL FOOTSWITCH
4	T7885	MCAFFEE WINDOWS AV CLIENT
4	T7449	WINDOWS SUPPLEMENTAL TRANS CONFIG
1	B1949	MCC 7500E SOFTWARE DVD
1	B1948	MCC 7500E DISPATCH POSITION LICENSES
4	UA00652AA	ADD: 160 RADIO RESOURCES LICENSE
4	UA00653AA	ADD: BASIC CONSOLE OPERATION
4	UA00654AA	ADD: ASTRO 25 TRUNKING OPERATION
4	UA00655AA	ADD: ADVANCED CONVENTIONAL OPERATION
4	UA00658AA	ADD: SECURE OPERATION
4	UA00659AA	ADD: ADP/AES/DES-OFB ENCRYPTION
4	UA00661AA	ADD: ENHANCED IRR
4	DSLOGITECHZ130	LOGITECH Z130 SPEAKERS
4	B1941	USB AUDIO INTERFACE MODULE
4	TT3903A	Z2 G5 MINI WORKSTATION NON RETURNABLE
4	DSEV221B	TECH GLOBAL EVOLUTION SERIES 22INCH WITH TOUCH
4	DSST7300U3M	STARTECH 7 PORT USB 3.0 HUB
8	B1952	SPEAKER, DESKTOP, USB
8	CA03405AA	ADD: POWER SUPPLY WITH DC CORD
8	CA03406AA	ADD: AC LINE CORD, NORTH AMERICA
8	CA03413AA	ADD: USB CABLE, TYPE A TO TYPE C, 4.5M
4	B1914	MCC SERIES DESKTOP GOOSENECK MICROPHONE
4	B1913	MCC SERIES HEADSET JACK
4	DSTWIN6328A	PROVIDES ONE DUAL PEDAL FOOTSWITCH
4	T7885	MCAFFEE WINDOWS AV CLIENT
4	T7449	WINDOWS SUPPLEMENTAL TRANS CONFIG
1	B1949	MCC 7500E SOFTWARE DVD
1	B1948	MCC 7500E DISPATCH POSITION LICENSES
4	UA00652AA	ADD: 160 RADIO RESOURCES LICENSE
4	UA00653AA	ADD: BASIC CONSOLE OPERATION
4	UA00654AA	ADD: ASTRO 25 TRUNKING OPERATION
4	UA00655AA	ADD: ADVANCED CONVENTIONAL OPERATION



4	UA00658AA	ADD: SECURE OPERATION
4	UA00659AA	ADD: ADP/AES/DES-OFB ENCRYPTION
4	UA00661AA	ADD: ENHANCED IRR
4	DSLOGITECHZ130	LOGITECH Z130 SPEAKERS
4	B1941	USB AUDIO INTERFACE MODULE
4	TT3903A	Z2 G5 MINI WORKSTATION NON RETURNABLE
4	DSEV221B	TECH GLOBAL EVOLUTION SERIES 22INCH WITH TOUCH
4	DSF2B56AA	USB EXTERNAL DVD DRIVE
4	DSST7300U3M	STARTECH 7 PORT USB 3.0 HUB
8	B1952	SPEAKER, DESKTOP, USB
8	CA03405AA	ADD: POWER SUPPLY WITH DC CORD
8	CA03406AA	ADD: AC LINE CORD, NORTH AMERICA
8	CA03413AA	ADD: USB CABLE, TYPE A TO TYPE C, 4.5M
4	B1914	MCC SERIES DESKTOP GOOSENECK MICROPHONE
4	B1913	MCC SERIES HEADSET JACK
4	DSTWIN6328A	PROVIDES ONE DUAL PEDAL FOOTSWITCH
4	T7885	MCAFFEE WINDOWS AV CLIENT
4	T7449	WINDOWS SUPPLEMENTAL TRANS CONFIG
4	L37TSS9PW1 N	ALL BAND CONSOLETTTE
4	GA05508	DEL: DELETE VHF BAND
4	GA05509	DEL: DELETE UHF BAND
4	G361	ENH: P25 TRUNKING SOFTWARE APX
4	G51	ENH: SMARTZONE OPERATION APX
4	G806	ENH: ASTRO DIGITAL CAI OP APX
4	GA00580	ADD: TDMA OPERATION APX
4	G851	ADD: AES/DES-XL/DES-OFB ENCRYPTION AND ADP
4	W969	ADD: MULTIPLE KEY ENCRYPTION OPERATION
4	L999	ADD: FULL FP W/E5/KEYPAD/CLOCK/VU
4	W382	ADD: CONTROL STATION DESK GCAI MIC
4	GA00469	ENH: EXTENDED DISPATCH APX CONSOLETTTE
4	CA01598	ADD: AC LINE CORD US
4	HKN6233C	APX CONSOLETTTE RACK MOUNT KIT
4	GA00318	ADD: 5Y ESSENTIAL SERVICE
4	L37TSS9PW1 N	ALL BAND CONSOLETTTE
4	GA05508	DEL: DELETE VHF BAND
4	GA05509	DEL: DELETE UHF BAND
4	G361	ENH: P25 TRUNKING SOFTWARE APX
4	G51	ENH: SMARTZONE OPERATION APX
4	G806	ENH: ASTRO DIGITAL CAI OP APX
4	GA00580	ADD: TDMA OPERATION APX
4	G851	ADD: AES/DES-XL/DES-OFB ENCRYPTION AND ADP
4	W969	ADD: MULTIPLE KEY ENCRYPTION OPERATION
4	L999	ADD: FULL FP W/E5/KEYPAD/CLOCK/VU



4	W382	ADD: CONTROL STATION DESK GCAI MIC
4	GA00469	ENH: EXTENDED DISPATCH APX CONSOLETTTE
4	CA01598	ADD: AC LINE CORD US
4	HKN6233C	APX CONSOLETTTE RACK MOUNT KIT
4	GA00318	ADD: 5Y ESSENTIAL SERVICE
4	L37TSS9PW1 N	ALL BAND CONSOLETTTE
4	GA05508	DEL: DELETE VHF BAND
4	GA05509	DEL: DELETE UHF BAND
4	G361	ENH: P25 TRUNKING SOFTWARE APX
4	G51	ENH: SMARTZONE OPERATION APX
4	G806	ENH: ASTRO DIGITAL CAI OP APX
4	GA00580	ADD: TDMA OPERATION APX
4	G851	ADD: AES/DES-XL/DES-OFB ENCRYPTION AND ADP
4	W969	ADD: MULTIPLE KEY ENCRYPTION OPERATION
4	L999	ADD: FULL FP W/E5/KEYPAD/CLOCK/VU
4	W382	ADD: CONTROL STATION DESK GCAI MIC
4	GA00469	ENH: EXTENDED DISPATCH APX CONSOLETTTE
4	CA01598	ADD: AC LINE CORD US
4	HKN6233C	APX CONSOLETTTE RACK MOUNT KIT
4	GA00318	ADD: 5Y ESSENTIAL SERVICE
1	DSYB80681	YAGI ELEMENT 9 DBD 806-896 MHZ N FEMALE
1	DSUNV	LIGHT DUTY RIGHT ANGLE ANTENNA CLAMP, GALVANIZED
1	DSNM50V12	CONNECTOR, N MALE INTERFACE FOR EC4-50
80	DSEC450	COAXIAL CABLE, 1/2" 50 OHM CORRUGATED COPPER WITH BLACK PE JACKET
1	DSNM50V12	CONNECTOR, N MALE INTERFACE FOR EC4-50
1	DSNF50B12X	CONNECTOR, N FEMALE INTERFACE FOR EC4-50-HF
1	DSISB50HNC2MA	RF SPD, 125-1000MHZ DC BLOCK BULKHEAD MT NM ANTENNA, NF EQUIPMENT SIDE
70	DSEC450HF	COAXIAL CABLE, 1/2" HIFLEX, 50 OHM WITH BLACK PE JACKET
1	DSNM50B12X	CONNECTOR, N MALE INTERFACE FOR EC4-50-HF
240	DSEC150HF	COAXIAL CABLE, 1/4" HIFLEX, 50 OHM WITH BLACK PE JACKET
12	DSNM50B14X	CONNECTOR, N MALE INTERFACE FOR EC1-50-HF
1	DSYB80681	YAGI ELEMENT 9 DBD 806-896 MHZ N FEMALE
1	DSUNV	LIGHT DUTY RIGHT ANGLE ANTENNA CLAMP, GALVANIZED
1	DSNM50V12	CONNECTOR, N MALE INTERFACE FOR EC4-50
80	DSEC450	COAXIAL CABLE, 1/2" 50 OHM CORRUGATED COPPER WITH BLACK PE JACKET
1	DSNM50V12	CONNECTOR, N MALE INTERFACE FOR EC4-50
1	DSNF50B12X	CONNECTOR, N FEMALE INTERFACE FOR EC4-50-HF
1	DSISB50HNC2MA	RF SPD, 125-1000MHZ DC BLOCK BULKHEAD MT NM ANTENNA, NF EQUIPMENT SIDE
70	DSEC450HF	COAXIAL CABLE, 1/2" HIFLEX, 50 OHM WITH BLACK PE JACKET
1	DSNM50B12X	CONNECTOR, N MALE INTERFACE FOR EC4-50-HF
25	DSEC150HF	COAXIAL CABLE, 1/4" HIFLEX, 50 OHM WITH BLACK PE JACKET
12	DSNM50B14X	CONNECTOR, N MALE INTERFACE FOR EC1-50-HF
1	DSCS74861605SN	HYBRID CONTROL STATION COMBINER, 746-869 MHZ 16 CH.



4	L37TSS9PW1 N	ALL BAND CONSOLETTTE
4	G361	ENH: P25 TRUNKING SOFTWARE APX
4	G51	ENH: SMARTZONE OPERATION APX
4	GA00580	ADD: TDMA OPERATION APX
4	G806	ENH: ASTRO DIGITAL CAI OP APX
4	G851	ADD: AES/DES-XL/DES-OFB ENCRYPTION AND ADP
4	W969	ADD: MULTIPLE KEY ENCRYPTION OPERATION
4	L999	ADD: FULL FP W/E5/KEYPAD/CLOCK/VU
4	W382	ADD: CONTROL STATION DESK GCAI MIC
4	GA00469	ENH: EXTENDED DISPATCH APX CONSOLETTTE
4	CA01598	ADD: AC LINE CORD US
4	HKN6233C	APX CONSOLETTTE RACK MOUNT KIT
4	GA00318	ADD: 5Y ESSENTIAL SERVICE
2	DSYH06	YAGI, 6 ELEMENT, 9DBD, 100-250MHZ, 8MHZ BW, N FEMALE
2	DSNM50V12	CONNECTOR, N MALE INTERFACE FOR EC4-50
80	DSEC450	COAXIAL CABLE, 1/2" 50 OHM CORRUGATED COPPER WITH BLACK PE JACKET
1	DSNM50V12	CONNECTOR, N MALE INTERFACE FOR EC4-50
1	DSNF50B12X	CONNECTOR, N FEMALE INTERFACE FOR EC4-50-HF
1	DSISB50HNC2MA	RF SPD, 125-1000MHZ DC BLOCK BULKHEAD MT NM ANTENNA, NF EQUIPMENT SIDE
70	DSEC450HF	COAXIAL CABLE, 1/2" HIFLEX, 50 OHM WITH BLACK PE JACKET
1	DSNM50B12X	CONNECTOR, N MALE INTERFACE FOR EC4-50-HF
30	DSEC150HF	COAXIAL CABLE, 1/4" HIFLEX, 50 OHM WITH BLACK PE JACKET
3	DSNM50B14X	CONNECTOR, N MALE INTERFACE FOR EC1-50-HF
2	DSSP0000115111	ANTENNA TRIPLEXER 30-180 MHZ, 330-520 MHZ, 746-960 MHZ
140	DSEC150HF	COAXIAL CABLE, 1/4" HIFLEX, 50 OHM WITH BLACK PE JACKET
1	DSNM50B14X	CONNECTOR, N MALE INTERFACE FOR EC1-50-HF
1	DSNM50V12	CONNECTOR, N MALE INTERFACE FOR EC4-50
80	DSEC450	COAXIAL CABLE, 1/2" 50 OHM CORRUGATED COPPER WITH BLACK PE JACKET
1	DSNM50V12	CONNECTOR, N MALE INTERFACE FOR EC4-50
1	DSNF50B12X	CONNECTOR, N FEMALE INTERFACE FOR EC4-50-HF
1	DSISB50HNC2MA	RF SPD, 125-1000MHZ DC BLOCK BULKHEAD MT NM ANTENNA, NF EQUIPMENT SIDE
70	DSEC450HF	COAXIAL CABLE, 1/2" HIFLEX, 50 OHM WITH BLACK PE JACKET
1	DSNM50B12X	CONNECTOR, N MALE INTERFACE FOR EC4-50-HF
1	DSCS15170405SN	HYBRID CONTROL STATION COMBINER, 150-174 MHZ 4 CH.
1	DSDS4C03CS36DN	UHF CS ANTENNA 2.9DBD
1	DSNM50V12	CONNECTOR, N MALE INTERFACE FOR EC4-50
80	DSEC450	COAXIAL CABLE, 1/2" 50 OHM CORRUGATED COPPER WITH BLACK PE JACKET
1	DSNM50V12	CONNECTOR, N MALE INTERFACE FOR EC4-50
1	DSNF50B12X	CONNECTOR, N FEMALE INTERFACE FOR EC4-50-HF
1	DSISB50HNC2MA	RF SPD, 125-1000MHZ DC BLOCK BULKHEAD MT NM ANTENNA, NF EQUIPMENT SIDE
70	DSEC450HF	COAXIAL CABLE, 1/2" HIFLEX, 50 OHM WITH BLACK PE JACKET
1	DSNM50B12X	CONNECTOR, N MALE INTERFACE FOR EC4-50-HF
30	DSEC150HF	COAXIAL CABLE, 1/4" HIFLEX, 50 OHM WITH BLACK PE JACKET



3	DSNM50B14X	CONNECTOR, N MALE INTERFACE FOR EC1-50-HF
1	DSSP0000115111	ANTENNA TRIPLEXER 30-180 MHZ, 330-520 MHZ, 746-960 MHZ
70	DSEC150HF	COAXIAL CABLE, 1/4" HIFLEX, 50 OHM WITH BLACK PE JACKET
1	DSNM50B14X	CONNECTOR, N MALE INTERFACE FOR EC1-50-HF
1	DSNM50V12	CONNECTOR, N MALE INTERFACE FOR EC4-50
80	DSEC450	COAXIAL CABLE, 1/2" 50 OHM CORRUGATED COPPER WITH BLACK PE JACKET
1	DSNM50V12	CONNECTOR, N MALE INTERFACE FOR EC4-50
1	DSNF50B12X	CONNECTOR, N FEMALE INTERFACE FOR EC4-50-HF
1	DSISB50HNC2MA	RF SPD, 125-1000MHZ DC BLOCK BULKHEAD MT NM ANTENNA, NF EQUIPMENT SIDE
70	DSEC450HF	COAXIAL CABLE, 1/2" HIFLEX, 50 OHM WITH BLACK PE JACKET
1	DSNM50B12X	CONNECTOR, N MALE INTERFACE FOR EC4-50-HF
1	DSCS45520405SN	HYBRID CONTROL STATION COMBINER, 450-520 MHZ 4 CH.
1	DSYB80681	YAGI ELEMENT 9 DBD 806-896 MHZ N FEMALE
1	DSNM50V12	CONNECTOR, N MALE INTERFACE FOR EC4-50
80	DSEC450	COAXIAL CABLE, 1/2" 50 OHM CORRUGATED COPPER WITH BLACK PE JACKET
1	DSNM50V12	CONNECTOR, N MALE INTERFACE FOR EC4-50
1	DSNF50B12X	CONNECTOR, N FEMALE INTERFACE FOR EC4-50-HF
1	DSISB50HNC2MA	RF SPD, 125-1000MHZ DC BLOCK BULKHEAD MT NM ANTENNA, NF EQUIPMENT SIDE
70	DSEC450HF	COAXIAL CABLE, 1/2" HIFLEX, 50 OHM WITH BLACK PE JACKET
1	DSNM50B12X	CONNECTOR, N MALE INTERFACE FOR EC4-50-HF
30	DSEC150HF	COAXIAL CABLE, 1/4" HIFLEX, 50 OHM WITH BLACK PE JACKET
3	DSNM50B14X	CONNECTOR, N MALE INTERFACE FOR EC1-50-HF
1	DSSP0000115111	ANTENNA TRIPLEXER 30-180 MHZ, 330-520 MHZ, 746-960 MHZ
70	DSEC150HF	COAXIAL CABLE, 1/4" HIFLEX, 50 OHM WITH BLACK PE JACKET
1	DSNM50B14X	CONNECTOR, N MALE INTERFACE FOR EC1-50-HF
1	DSYB80681	YAGI ELEMENT 9 DBD 806-896 MHZ N FEMALE
1	DSNM50V12	CONNECTOR, N MALE INTERFACE FOR EC4-50
80	DSEC450	COAXIAL CABLE, 1/2" 50 OHM CORRUGATED COPPER WITH BLACK PE JACKET
1	DSNM50V12	CONNECTOR, N MALE INTERFACE FOR EC4-50
1	DSNF50B12X	CONNECTOR, N FEMALE INTERFACE FOR EC4-50-HF
1	DSISB50HNC2MA	RF SPD, 125-1000MHZ DC BLOCK BULKHEAD MT NM ANTENNA, NF EQUIPMENT SIDE
70	DSEC450HF	COAXIAL CABLE, 1/2" HIFLEX, 50 OHM WITH BLACK PE JACKET
1	DSNM50B12X	CONNECTOR, N MALE INTERFACE FOR EC4-50-HF
1	DSCS74860405SN	HYBRID CONTROL STATION COMBINER, 746-869 MHZ 4 CH.
4	F2380	MCD 5000 DESKSET
4	FHN7469	MCD 5000 DESKSET / RGU POWER SUPPLY WITH USA POWER CORD
4	TDN1113	ETHERNET CABLE 50'
4	F2380	MCD 5000 DESKSET
4	FHN7469	MCD 5000 DESKSET / RGU POWER SUPPLY WITH USA POWER CORD
4	TDN1113	ETHERNET CABLE 50'
4	F2380	MCD 5000 DESKSET
4	FHN7469	MCD 5000 DESKSET / RGU POWER SUPPLY WITH USA POWER CORD
4	TDN1113	ETHERNET CABLE 50'





3	SQM01SUM0205	GGM 8000 GATEWAY
3	CA01616AA	ADD: AC POWER
3	CA02086AA	ADD: HIGH DENSITY ENH CONV GATEWAY
1	T7038	GCP 8000 SITE CONTROLLER
1	CA00303AA	ADD: QTY (1) SITE CONTROLLER
1	CA01136AA	MCC 7500 CONVEN SITE OPER
1	CA01400AA	ADD: POWER CABLE, DC
1	X153AW	ADD: RACK MOUNT HARDWARE
3	THN1013	RACK 7.5' OPEN
12	0784469Y02	BRKT, CBL SUPPORT
3	3182602Y06	GROUNDING BUS BAR
7	DSRMP615A	SPD, TYPE 3, 120V RACK MOUNT, 15A PLUG-IN W/ (6) 15A NEMA 5-15 OUTLETS
1	FHN7469	MCD 5000 DESKSET / RGU POWER SUPPLY WITH USA POWER CORD
1	TDN1113	ETHERNET CABLE 50'
1	B1941	USB AUDIO INTERFACE MODULE
1	TT3903A	Z2 G5 MINI WORKSTATION NON RETURNABLE
1	DSST7300U3M	STARTECH 7 PORT USB 3.0 HUB
1	B1952	SPEAKER, DESKTOP, USB
1	CA03405AA	ADD: POWER SUPPLY WITH DC CORD
1	CA03406AA	ADD: AC LINE CORD, NORTH AMERICA
1	CA03413AA	ADD: USB CABLE, TYPE A TO TYPE C, 4.5M
1	B1914	MCC SERIES DESKTOP GOOSENECK MICROPHONE
1	B1913	MCC SERIES HEADSET JACK
1	DSTWIN6328A	PROVIDES ONE DUAL PEDAL FOOTSWITCH
1	DLN6781	FRU: POWER SUPPLY
1	DLN6898	FRU: FAN MODULE

**APPENDIX X  
AMENDMENT OF GRANT CONTRACT TERMS**

Agency Code: 01077

Contract Number: C198785

This is an Appendix (Appendix X) to the AGREEMENT between THE STATE OF NEW YORK, acting by and through the New York State Division of Homeland Security and Emergency Services (DHSES), and represents an amendment to the grant contract executed between DHSES and Albany County

It is understood that the terms and conditions of the original grant contract have been modified by mutual agreement between DHSES and the Grantee Agency. Those terms and conditions which have been modified herein supersede prior executed versions of this contract, and are annotated below. All other provisions of the contract shall remain in full force and effect for the duration of the contract, unless further amended by mutual agreement of the Parties, and by the electronic certification of a subsequent Appendix X by both DHSES and the Grantee Agency.

Amendment detail C198785:

Amendment Type - Extension  
Contract Start Date - 01/01/2018  
Contract End Date - 12/31/2021  
Contract Amount - \$1,272,530.00

Amendment created on - 07/08/2020  
Prior Contract Terms  
Contract Start Date - 01/01/2018  
Contract End Date - 12/31/2020  
Contract Amount - \$1,272,530.00

Amended documents attached:

IN WITNESS THEREOF, the parties hereto have electronically executed or approved this AGREEMENT on the dates of their signatures.

<b>GRANTEE:</b> BY: Daniel Lynch , Deputy County Executive Date: 07/14/2020	<b>NYS DIVISION OF HOMELAND SECURITY AND EMERGENCY SERVICES</b> BY: Eric Abramson , Acting Director of Grants Program Administration Date: 07/14/2020
<b>ATTORNEY GENERAL'S SIGNATURE</b> _____ Title: _____ Date: _____	<b>COMPTROLLER'S SIGNATURES</b> _____ Title: _____ Date: _____